

**Texas Prior Authorization Program
Clinical Criteria**

Savella (Milnacipran)

Clinical Criteria Information Included in this Document

Savella (Milnacipran)

- **Drugs requiring prior authorization:** the list of drugs requiring prior authorization for this clinical criteria
- **Prior authorization criteria logic:** a description of how the prior authorization request will be evaluated against the clinical criteria rules
- **Logic diagram:** a visual depiction of the clinical criteria logic
- **Supporting tables:** a collection of information associated with the steps within the criteria (diagnosis codes, procedure codes, and therapy codes)
- **References:** clinical publications and sources relevant to this clinical criteria

Note: Click the hyperlink to navigate directly to that section.

Revision Notes

Updated to include formulary statement (The listed GCNS may not be an indication of TX Medicaid Formulary coverage. To learn the current formulary coverage, visit TxVendorDrug.com/formulary/formulary-search.) on each 'Drug Requiring PA' table



Savella (Milnacipran)

Drugs Requiring Prior Authorization

The listed GCNS may not be an indication of TX Medicaid Formulary coverage. To learn the current formulary coverage, visit TxVendorDrug.com/formulary/formulary-search.

Drugs Requiring Prior Authorization	
Label Name	GCN
SAVELLA 100MG TABLET	22022
SAVELLA 12.5MG TABLET	21979
SAVELLA 25MG TABLET	22008
SAVELLA 50MG TABLET	22019
SAVELLA TITRATION PACK	22025



Savella (Milnacipran)

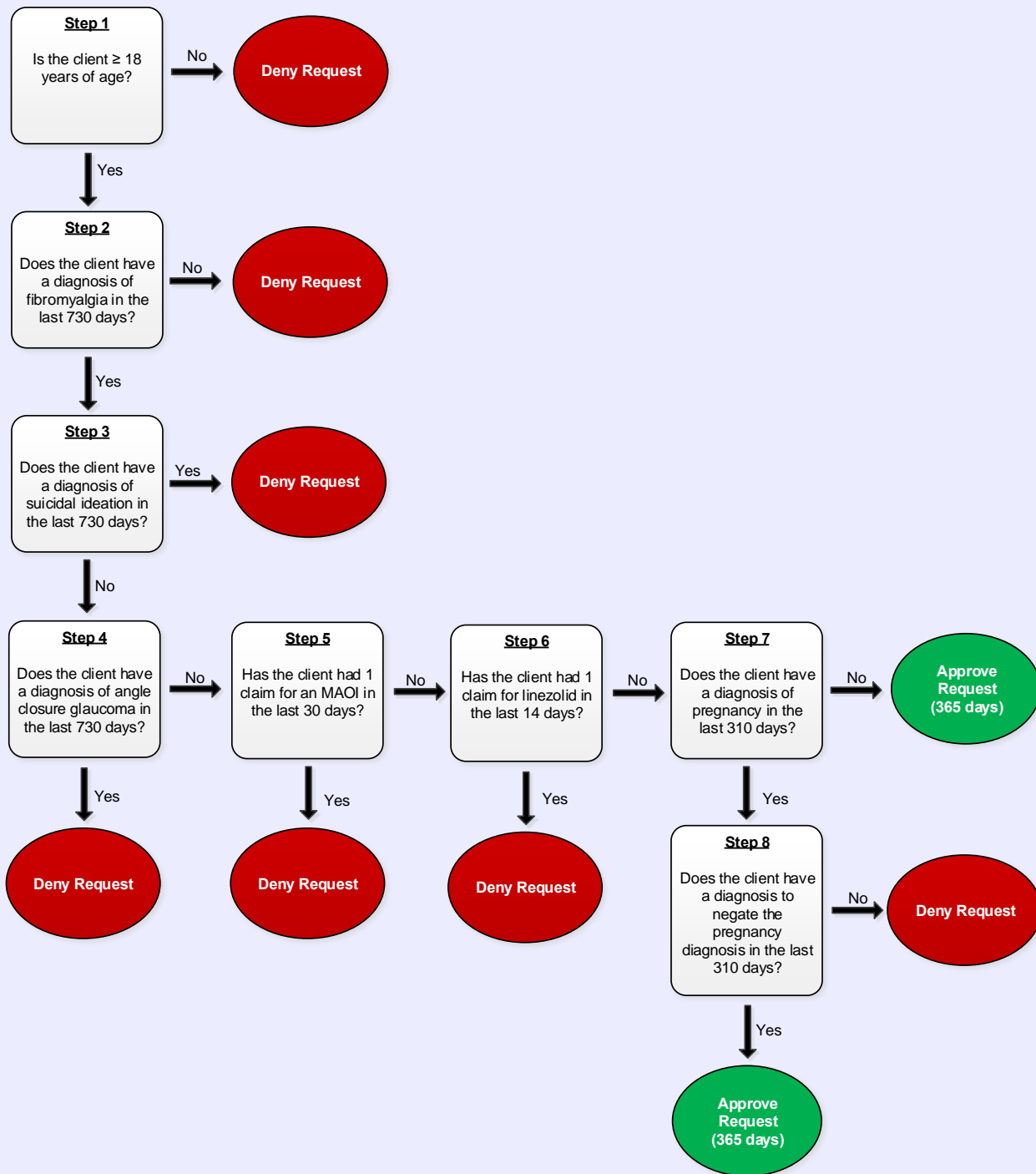
Clinical Criteria Logic

1. Is the client greater than or equal to (\geq) 18 years of age?
 Yes – Go to #2
 No – Deny
2. Does the client have a diagnosis of fibromyalgia the last 730 days?
 Yes – Go to #3
 No – Deny
3. Does the client have a diagnosis of suicidal ideation in the last 730 days?
 Yes – Deny
 No – Go to #4
4. Does the client have a diagnosis of angle closure glaucoma in the last 730 days?
 Yes – Deny
 No – Go to #5
5. Has the client had 1 claim for an MAOI in the last 30 days?
 Yes – Deny
 No – Go to #6
6. Has the client had 1 claim for linezolid in the last 14 days?
 Yes – Deny
 No – Go to #7
7. Does the client have a diagnosis of pregnancy in the last 310 days?
 Yes – Go to #8
 No – Approve (365 days)
8. Does the client have a diagnosis to negate the pregnancy diagnosis in the last 310 days?
 Yes – Approve (365 days)
 No – Deny



Savella (Milnacipran)

Clinical Criteria Logic Diagram





Savella (Milnacipran)

Clinical Criteria Supporting Tables

Step 2 (diagnosis of fibromyalgia) Required quantity: 1 Look back timeframe: 730 days	
ICD-10 Code	Description
M609	MYOSITIS, UNSPECIFIED
M791	MYALGIA
M797	FIBROMYALGIA

Step 3 (diagnosis of suicidal ideation) Required quantity: 1 Look back timeframe: 730 days	
ICD-10 Code	Description
R45851	SUICIDAL IDEATIONS

Step 4 (diagnosis of angle closure glaucoma) Required quantity: 1 Look back timeframe: 730 days	
ICD-10 Code	Description
H40061	PRIMARY ANGLE CLOSURE WITHOUT GLAUCOMA DAMAGE RIGHT EYE
H40062	PRIMARY ANGLE CLOSURE WITHOUT GLAUCOMA DAMAGE LEFT EYE
H40063	PRIMARY ANGLE CLOSURE WITHOUT GLAUCOMA DAMAGE BILATERAL
H40069	PRIMARY ANGLE CLOSURE WITHOUT GLAUCOMA DAMAGE UNSPECIFIED EYE
H4020X0	UNSPECIFIED PRIMARY ANGLE-CLOSURE GLAUCOMA, STAGE UNSPECIFIED
H4020X1	UNSPECIFIED PRIMARY ANGLE-CLOSURE GLAUCOMA, MILD STAGE
H4020X2	UNSPECIFIED PRIMARY ANGLE-CLOSURE GLAUCOMA, MODERATE STAGE
H4020X3	UNSPECIFIED PRIMARY ANGLE-CLOSURE GLAUCOMA, SEVERE STAGE
H4020X4	UNSPECIFIED PRIMARY ANGLE-CLOSURE GLAUCOMA, INDETERMINATE STAGE
H40211	ACUTE ANGLE-CLOSURE GLAUCOMA RIGHT EYE

Step 4 (diagnosis of angle closure glaucoma)	
Required quantity: 1	
Look back timeframe: 730 days	
ICD-10 Code	Description
H40212	ACUTE ANGLE-CLOSURE GLAUCOMA LEFT EYE
H40213	ACUTE ANGLE-CLOSURE GLAUCOMA BILATERAL
H40219	ACUTE ANGLE-CLOSURE GLAUCOMA UNSPECIFIED EYE
H402290	CHRONIC ANGLE-CLOSURE GLAUCOMA, UNSPECIFIED EYE, STAGE UNSPECIFIED
H402210	CHRONIC ANGLE-CLOSURE GLAUCOMA, RIGHT EYE STAGE UNSPECIFIED
H402211	CHRONIC ANGLE-CLOSURE GLAUCOMA, RIGHT EYE MILD STAGE
H402212	CHRONIC ANGLE-CLOSURE GLAUCOMA, RIGHT EYE MODERATE STAGE
H402213	CHRONIC ANGLE-CLOSURE GLAUCOMA, RIGHT EYE SEVERE STAGE
H402214	CHRONIC ANGLE-CLOSURE GLAUCOMA, RIGHT EYE INDETERMINATE STAGE
H402220	CHRONIC ANGLE-CLOSURE GLAUCOMA, LEFT EYE STAGE UNSPECIFIED
H402221	CHRONIC ANGLE-CLOSURE GLAUCOMA, LEFT EYE MILD STAGE
H402222	CHRONIC ANGLE-CLOSURE GLAUCOMA, LEFT EYE MODERATE STAGE
H402223	CHRONIC ANGLE-CLOSURE GLAUCOMA, LEFT EYE SEVERE STAGE
H402224	CHRONIC ANGLE-CLOSURE GLAUCOMA, LEFT EYE INDETERMINATE STAGE
H402230	CHRONIC ANGLE-CLOSURE GLAUCOMA, BILATERAL STAGE UNSPECIFIED
H402231	CHRONIC ANGLE-CLOSURE GLAUCOMA, BILATERAL MILD STAGE
H402232	CHRONIC ANGLE-CLOSURE GLAUCOMA, BILATERAL MODERATE STAGE
H402233	CHRONIC ANGLE-CLOSURE GLAUCOMA, BILATERAL SEVERE STAGE
H402234	CHRONIC ANGLE-CLOSURE GLAUCOMA, BILATERAL INDETERMINATE STAGE
H402290	CHRONIC ANGLE-CLOSURE GLAUCOMA, UNSPECIFIED EYE STAGE UNSPECIFIED
H402291	CHRONIC ANGLE-CLOSURE GLAUCOMA, UNSPECIFIED EYE MILD STAGE
H402292	CHRONIC ANGLE-CLOSURE GLAUCOMA, UNSPECIFIED EYE MODERATE STAGE
H402293	CHRONIC ANGLE-CLOSURE GLAUCOMA, UNSPECIFIED EYE SEVERE STAGE
H402294	CHRONIC ANGLE-CLOSURE GLAUCOMA, UNSPECIFIED EYE INDETERMINATE STAGE
H40231	INTERMITTENT ANGLE-CLOSURE GLAUCOMA RIGHT EYE
H40232	INTERMITTENT ANGLE-CLOSURE GLAUCOMA LEFT EYE
H40233	INTERMITTENT ANGLE-CLOSURE GLAUCOMA BILATERAL
H40239	INTERMITTENT ANGLE-CLOSURE GLAUCOMA UNSPECIFIED EYE
H40241	RESIDUAL STAGE OF ANGLE-CLOSURE GLAUCOMA RIGHT EYE
H40242	RESIDUAL STAGE OF ANGLE-CLOSURE GLAUCOMA LEFT EYE

Step 4 (diagnosis of angle closure glaucoma)	
Required quantity: 1	
Look back timeframe: 730 days	
ICD-10 Code	Description
H40243	RESIDUAL STAGE OF ANGLE-CLOSURE GLAUCOMA BILATERAL
H40249	RESIDUAL STAGE OF ANGLE-CLOSURE GLAUCOMA UNSPECIFIED EYE

Step 5 (1 claim for an MAOI)	
Required quantity: 1	
Look back timeframe: 30 days	
Description	GCN
AZILECT 0.5MG TABLET	27081
AZILECT 1MG TABLET	24654
EMSAM 6MG/24 HOURS PATCH	26612
EMSAM 12MG/24 HOURS PATCH	26614
MARPLAN 10MG TABLET	16416
NARDIL 15MG TABLET	16417
PARNATE 10MG TABLET	16418
PHENELZINE SULFATE 15MG TABLET	16417
SELEGILINE HCL 5MG CAPSULE	15603
SELEGILINE HCL 5MG TABLET	15600
TRANLYCYPROMINE SULF 10MG TABLET	16418
ZELAPAR 1.25MG ODT TABLET	22783

Step 6 (1 claim for linezolid)	
Required quantity: 1	
Look back timeframe: 14 days	
Description	GCN
ZYVOX 100MG/5ML SUSPENSION	26871
ZYVOX 600MG TABLET	26870
ZYVOX 600MG/300ML IV SOLUTION	26873

Step 7 (diagnosis of pregnancy)	
Required diagnosis: 1	
Look back timeframe: 310 days	
ICD-10 Code	Description
O0900	SUPERVISION OF PREGNANCY WITH HISTORY OF INFERTILITY, UNSPECIFIED TRIMESTER
O0901	SUPERVISION OF PREGNANCY WITH HISTORY OF INFERTILITY, FIRST TRIMESTER
O0902	SUPERVISION OF PREGNANCY WITH HISTORY OF INFERTILITY, SECOND TRIMESTER
O0903	SUPERVISION OF PREGNANCY WITH HISTORY OF INFERTILITY, THIRD TRIMESTER
O0910	SUPERVISION OF PREGNANCY WITH HISTORY OF ECTOPIC OR MOLAR PREGNANCY, UNSPECIFIED TRIMESTER
O0911	SUPERVISION OF PREGNANCY WITH HISTORY OF ECTOPIC OR MOLAR PREGNANCY, FIRST TRIMESTER
O0912	SUPERVISION OF PREGNANCY WITH HISTORY OF ECTOPIC OR MOLAR PREGNANCY, SECOND TRIMESTER
O0913	SUPERVISION OF PREGNANCY WITH HISTORY OF ECTOPIC OR MOLAR PREGNANCY, THIRD TRIMESTER
O09211	SUPERVISION OF PREGNANCY WITH HISTORY OF PRE-TERM LABOR, FIRST TRIMESTER
O09212	SUPERVISION OF PREGNANCY WITH HISTORY OF PRE-TERM LABOR, SECOND TRIMESTER
O09213	SUPERVISION OF PREGNANCY WITH HISTORY OF PRE-TERM LABOR, THIRD TRIMESTER
O09219	SUPERVISION OF PREGNANCY WITH HISTORY OF PRE-TERM LABOR, UNSPECIFIED TRIMESTER
O09291	SUPERVISION OF PREGNANCY WITH OTHER POOR REPRODUCTIVE OR OBSTETRIC HISTORY, FIRST TRIMESTER
O09292	SUPERVISION OF PREGNANCY WITH OTHER POOR REPRODUCTIVE OR OBSTETRIC HISTORY, SECOND TRIMESTER
O09293	SUPERVISION OF PREGNANCY WITH OTHER POOR REPRODUCTIVE OR OBSTETRIC HISTORY, THIRD TRIMESTER
O09299	SUPERVISION OF PREGNANCY WITH OTHER POOR REPRODUCTIVE OR OBSTETRIC HISTORY, UNSPECIFIED TRIMESTER
O0930	SUPERVISION OF PREGNANCY WITH INSUFFICIENT ANTENATAL CARE, UNSPECIFIED TRIMESTER
O0931	SUPERVISION OF PREGNANCY WITH INSUFFICIENT ANTENATAL CARE, FIRST TRIMESTER
O0932	SUPERVISION OF PREGNANCY WITH INSUFFICIENT ANTENATAL CARE, SECOND TRIMESTER
O0933	SUPERVISION OF PREGNANCY WITH INSUFFICIENT ANTENATAL CARE, THIRD TRIMESTER
O0940	SUPERVISION OF PREGNANCY WITH GRAND MULTIPARITY, UNSPECIFIED TRIMESTER
O0941	SUPERVISION OF PREGNANCY WITH GRAND MULTIPARITY, FIRST TRIMESTER

Step 7 (diagnosis of pregnancy)	
Required diagnosis: 1	
Look back timeframe: 310 days	
ICD-10 Code	Description
O0942	SUPERVISION OF PREGNANCY WITH GRAND MULTIPARITY, SECOND TRIMESTER
O0943	SUPERVISION OF PREGNANCY WITH GRAND MULTIPARITY, THIRD TRIMESTER
O09511	SUPERVISION OF ELDERLY PRIMIGRAVIDA, FIRST TRIMESTER
O09512	SUPERVISION OF ELDERLY PRIMIGRAVIDA, SECOND TRIMESTER
O09513	SUPERVISION OF ELDERLY PRIMIGRAVIDA, THIRD TRIMESTER
O09519	SUPERVISION OF ELDERLY PRIMIGRAVIDA, UNSPECIFIED TRIMESTER
O09521	SUPERVISION OF ELDERLY MULTIGRAVIDA, FIRST TRIMESTER
O09522	SUPERVISION OF ELDERLY MULTIGRAVIDA, SECOND TRIMESTER
O09523	SUPERVISION OF ELDERLY MULTIGRAVIDA, THIRD TRIMESTER
O09529	SUPERVISION OF ELDERLY MULTIGRAVIDA, UNSPECIFIED TRIMESTER
O09611	SUPERVISION OF YOUNG PRIMIGRAVIDA, FIRST TRIMESTER
O09612	SUPERVISION OF YOUNG PRIMIGRAVIDA, SECOND TRIMESTER
O09613	SUPERVISION OF YOUNG PRIMIGRAVIDA, THIRD TRIMESTER
O09619	SUPERVISION OF YOUNG PRIMIGRAVIDA, UNSPECIFIED TRIMESTER
O09621	SUPERVISION OF YOUNG MULTIGRAVIDA, FIRST TRIMESTER
O09622	SUPERVISION OF YOUNG MULTIGRAVIDA, SECOND TRIMESTER
O09623	SUPERVISION OF YOUNG MULTIGRAVIDA, THIRD TRIMESTER
O09629	SUPERVISION OF YOUNG MULTIGRAVIDA, UNSPECIFIED TRIMESTER
O0970	SUPERVISION OF HIGH RISK PREGNANCY DUE TO SOCIAL PROBLEMS, UNSPECIFIED TRIMESTER
O0971	SUPERVISION OF HIGH RISK PREGNANCY DUE TO SOCIAL PROBLEMS, FIRST TRIMESTER
O0972	SUPERVISION OF HIGH RISK PREGNANCY DUE TO SOCIAL PROBLEMS, SECOND TRIMESTER
O0973	SUPERVISION OF HIGH RISK PREGNANCY DUE TO SOCIAL PROBLEMS, THIRD TRIMESTER
O09811	SUPERVISION OF PREGNANCY RESULTING FROM ASSISTED REPRODUCTIVE TECHNOLOGY, FIRST TRIMESTER
O09812	SUPERVISION OF PREGNANCY RESULTING FROM ASSISTED REPRODUCTIVE TECHNOLOGY, SECOND TRIMESTER
O09813	SUPERVISION OF PREGNANCY RESULTING FROM ASSISTED REPRODUCTIVE TECHNOLOGY, THIRD TRIMESTER
O09819	SUPERVISION OF PREGNANCY RESULTING FROM ASSISTED REPRODUCTIVE TECHNOLOGY, UNSPECIFIED TRIMESTER
O09821	SUPERVISION OF PREGNANCY WITH HISTORY OF IN UTERO PROCEDURE DURING PREVIOUS PREGNANCY, FIRST TRIMESTER
O09822	SUPERVISION OF PREGNANCY WITH HISTORY OF IN UTERO PROCEDURE DURING PREVIOUS PREGNANCY, SECOND TRIMESTER
O09823	SUPERVISION OF PREGNANCY WITH HISTORY OF IN UTERO PROCEDURE DURING PREVIOUS PREGNANCY, THIRD TRIMESTER

Step 7 (diagnosis of pregnancy)	
Required diagnosis: 1	
Look back timeframe: 310 days	
ICD-10 Code	Description
O09829	SUPERVISION OF PREGNANCY WITH HISTORY OF IN UTERO PROCEDURE DURING PREVIOUS PREGNANCY, UNSPECIFIED TRIMESTER
O09891	SUPERVISION OF OTHER HIGH RISK PREGNANCIES, FIRST TRIMESTER
O09892	SUPERVISION OF OTHER HIGH RISK PREGNANCIES, SECOND TRIMESTER
O09893	SUPERVISION OF OTHER HIGH RISK PREGNANCIES, THIRD TRIMESTER
O09899	SUPERVISION OF OTHER HIGH RISK PREGNANCIES, UNSPECIFIED TRIMESTER
O0990	SUPERVISION OF HIGH RISK PREGNANCY, UNSPECIFIED, UNSPECIFIED TRIMESTER
O0991	SUPERVISION OF HIGH RISK PREGNANCY, UNSPECIFIED, FIRST TRIMESTER
O0992	SUPERVISION OF HIGH RISK PREGNANCY, UNSPECIFIED, SECOND TRIMESTER
O0993	SUPERVISION OF HIGH RISK PREGNANCY, UNSPECIFIED, THIRD TRIMESTER
O10011	PRE-EXISTING ESSENTIAL HYPERTENSION COMPLICATING PREGNANCY, FIRST TRIMESTER
O10012	PRE-EXISTING ESSENTIAL HYPERTENSION COMPLICATING PREGNANCY, SECOND TRIMESTER
O10013	PRE-EXISTING ESSENTIAL HYPERTENSION COMPLICATING PREGNANCY, THIRD TRIMESTER
O10019	PRE-EXISTING ESSENTIAL HYPERTENSION COMPLICATING PREGNANCY, UNSPECIFIED TRIMESTER
O10411	PRE-EXISTING SECONDARY HYPERTENSION COMPLICATING PREGNANCY, FIRST TRIMESTER
O10412	PRE-EXISTING SECONDARY HYPERTENSION COMPLICATING PREGNANCY, SECOND TRIMESTER
O10413	PRE-EXISTING SECONDARY HYPERTENSION COMPLICATING PREGNANCY, THIRD TRIMESTER
O10419	PRE-EXISTING SECONDARY HYPERTENSION COMPLICATING PREGNANCY, UNSPECIFIED TRIMESTER
O10911	UNSPECIFIED PRE-EXISTING HYPERTENSION COMPLICATING PREGNANCY, FIRST TRIMESTER
O10912	UNSPECIFIED PRE-EXISTING HYPERTENSION COMPLICATING PREGNANCY, SECOND TRIMESTER
O10913	UNSPECIFIED PRE-EXISTING HYPERTENSION COMPLICATING PREGNANCY, THIRD TRIMESTER
O10919	UNSPECIFIED PRE-EXISTING HYPERTENSION COMPLICATING PREGNANCY, UNSPECIFIED TRIMESTER
O111	PRE-EXISTING HYPERTENSION WITH PRE-ECLAMPSIA, FIRST TRIMESTER
O112	PRE-EXISTING HYPERTENSION WITH PRE-ECLAMPSIA, SECOND TRIMESTER

Step 7 (diagnosis of pregnancy)	
Required diagnosis: 1	
Look back timeframe: 310 days	
ICD-10 Code	Description
O113	PRE-EXISTING HYPERTENSION WITH PRE-ECLAMPSIA, THIRD TRIMESTER
O119	PRE-EXISTING HYPERTENSION WITH PRE-ECLAMPSIA, UNSPECIFIED TRIMESTER
O1200	GESTATIONAL EDEMA, UNSPECIFIED TRIMESTER
O1201	GESTATIONAL EDEMA, FIRST TRIMESTER
O1202	GESTATIONAL EDEMA, SECOND TRIMESTER
O1203	GESTATIONAL EDEMA, THIRD TRIMESTER
O1210	GESTATIONAL PROTEINURIA, UNSPECIFIED TRIMESTER
O1211	GESTATIONAL PROTEINURIA, FIRST TRIMESTER
O1212	GESTATIONAL PROTEINURIA, SECOND TRIMESTER
O1213	GESTATIONAL PROTEINURIA, THIRD TRIMESTER
O1220	GESTATIONAL EDEMA WITH PROTEINURIA, UNSPECIFIED TRIMESTER
O1221	GESTATIONAL EDEMA WITH PROTEINURIA, FIRST TRIMESTER
O1222	GESTATIONAL EDEMA WITH PROTEINURIA, SECOND TRIMESTER
O1223	GESTATIONAL EDEMA WITH PROTEINURIA, THIRD TRIMESTER
O131	GESTATIONAL [PREGNANCY-INDUCED] HYPERTENSION WITHOUT SIGNIFICANT PROTEINURIA, FIRST TRIMESTER
O132	GESTATIONAL [PREGNANCY-INDUCED] HYPERTENSION WITHOUT SIGNIFICANT PROTEINURIA, SECOND TRIMESTER
O133	GESTATIONAL [PREGNANCY-INDUCED] HYPERTENSION WITHOUT SIGNIFICANT PROTEINURIA, THIRD TRIMESTER
O139	GESTATIONAL [PREGNANCY-INDUCED] HYPERTENSION WITHOUT SIGNIFICANT PROTEINURIA, UNSPECIFIED TRIMESTER
O1400	MILD TO MODERATE PRE-ECLAMPSIA, UNSPECIFIED TRIMESTER
O1402	MILD TO MODERATE PRE-ECLAMPSIA, SECOND TRIMESTER
O1403	MILD TO MODERATE PRE-ECLAMPSIA, THIRD TRIMESTER
O1410	SEVERE PRE-ECLAMPSIA, UNSPECIFIED TRIMESTER
O1412	SEVERE PRE-ECLAMPSIA, SECOND TRIMESTER
O1413	SEVERE PRE-ECLAMPSIA, THIRD TRIMESTER
O1420	HELLP SYNDROME (HELLP), UNSPECIFIED TRIMESTER
O1422	HELLP SYNDROME (HELLP), SECOND TRIMESTER
O1423	HELLP SYNDROME (HELLP), THIRD TRIMESTER
O1490	UNSPECIFIED PRE-ECLAMPSIA, UNSPECIFIED TRIMESTER
O1492	UNSPECIFIED PRE-ECLAMPSIA, SECOND TRIMESTER
O1493	UNSPECIFIED PRE-ECLAMPSIA, THIRD TRIMESTER
O1500	ECLAMPSIA IN PREGNANCY, UNSPECIFIED TRIMESTER
O1502	ECLAMPSIA IN PREGNANCY, SECOND TRIMESTER
O1503	ECLAMPSIA IN PREGNANCY, THIRD TRIMESTER
O159	ECLAMPSIA, UNSPECIFIED AS TO TIME PERIOD
O161	UNSPECIFIED MATERNAL HYPERTENSION, FIRST TRIMESTER

Step 7 (diagnosis of pregnancy)	
Required diagnosis: 1	
Look back timeframe: 310 days	
ICD-10 Code	Description
O162	UNSPECIFIED MATERNAL HYPERTENSION, SECOND TRIMESTER
O163	UNSPECIFIED MATERNAL HYPERTENSION, THIRD TRIMESTER
O169	UNSPECIFIED MATERNAL HYPERTENSION, UNSPECIFIED TRIMESTER
O200	THREATENED ABORTION
O208	OTHER HEMORRHAGE IN EARLY PREGNANCY
O209	HEMORRHAGE IN EARLY PREGNANCY, UNSPECIFIED
O210	MILD HYPEREMESIS GRAVIDARUM
O211	HYPEREMESIS GRAVIDARUM WITH METABOLIC DISTURBANCE
O212	LATE VOMITING OF PREGNANCY
O218	OTHER VOMITING COMPLICATING PREGNANCY
O219	VOMITING OF PREGNANCY, UNSPECIFIED
O2300	INFECTIONS OF KIDNEY IN PREGNANCY, UNSPECIFIED TRIMESTER
O2301	INFECTIONS OF KIDNEY IN PREGNANCY, FIRST TRIMESTER
O2302	INFECTIONS OF KIDNEY IN PREGNANCY, SECOND TRIMESTER
O2303	INFECTIONS OF KIDNEY IN PREGNANCY, THIRD TRIMESTER
O2310	INFECTIONS OF BLADDER IN PREGNANCY, UNSPECIFIED TRIMESTER
O2311	INFECTIONS OF BLADDER IN PREGNANCY, FIRST TRIMESTER
O2312	INFECTIONS OF BLADDER IN PREGNANCY, SECOND TRIMESTER
O2313	INFECTIONS OF BLADDER IN PREGNANCY, THIRD TRIMESTER
O2320	INFECTIONS OF URETHRA IN PREGNANCY, UNSPECIFIED TRIMESTER
O2321	INFECTIONS OF URETHRA IN PREGNANCY, FIRST TRIMESTER
O2322	INFECTIONS OF URETHRA IN PREGNANCY, SECOND TRIMESTER
O2323	INFECTIONS OF URETHRA IN PREGNANCY, THIRD TRIMESTER
O2330	INFECTIONS OF OTHER PARTS OF URINARY TRACT IN PREGNANCY, UNSPECIFIED TRIMESTER
O2331	INFECTIONS OF OTHER PARTS OF URINARY TRACT IN PREGNANCY, FIRST TRIMESTER
O2332	INFECTIONS OF OTHER PARTS OF URINARY TRACT IN PREGNANCY, SECOND TRIMESTER
O2333	INFECTIONS OF OTHER PARTS OF URINARY TRACT IN PREGNANCY, THIRD TRIMESTER
O2340	UNSPECIFIED INFECTION OF URINARY TRACT IN PREGNANCY, UNSPECIFIED TRIMESTER
O2341	UNSPECIFIED INFECTION OF URINARY TRACT IN PREGNANCY, FIRST TRIMESTER
O2342	UNSPECIFIED INFECTION OF URINARY TRACT IN PREGNANCY, SECOND TRIMESTER
O2343	UNSPECIFIED INFECTION OF URINARY TRACT IN PREGNANCY, THIRD TRIMESTER
O23511	INFECTIONS OF CERVIX IN PREGNANCY, FIRST TRIMESTER
O23512	INFECTIONS OF CERVIX IN PREGNANCY, SECOND TRIMESTER
O23513	INFECTIONS OF CERVIX IN PREGNANCY, THIRD TRIMESTER

Step 7 (diagnosis of pregnancy)	
Required diagnosis: 1	
Look back timeframe: 310 days	
ICD-10 Code	Description
O23519	INFECTIONS OF CERVIX IN PREGNANCY, UNSPECIFIED TRIMESTER
O23521	SALPINGO-OOPHORITIS IN PREGNANCY, FIRST TRIMESTER
O23522	SALPINGO-OOPHORITIS IN PREGNANCY, SECOND TRIMESTER
O23523	SALPINGO-OOPHORITIS IN PREGNANCY, THIRD TRIMESTER
O23529	SALPINGO-OOPHORITIS IN PREGNANCY, UNSPECIFIED TRIMESTER
O23591	INFECTION OF OTHER PART OF GENITAL TRACT IN PREGNANCY, FIRST TRIMESTER
O23592	INFECTION OF OTHER PART OF GENITAL TRACT IN PREGNANCY, SECOND TRIMESTER
O23593	INFECTION OF OTHER PART OF GENITAL TRACT IN PREGNANCY, THIRD TRIMESTER
O23599	INFECTION OF OTHER PART OF GENITAL TRACT IN PREGNANCY, UNSPECIFIED TRIMESTER
O2390	UNSPECIFIED GENITOURINARY TRACT INFECTION IN PREGNANCY, UNSPECIFIED TRIMESTER
O2391	UNSPECIFIED GENITOURINARY TRACT INFECTION IN PREGNANCY, FIRST TRIMESTER
O2392	UNSPECIFIED GENITOURINARY TRACT INFECTION IN PREGNANCY, SECOND TRIMESTER
O2393	UNSPECIFIED GENITOURINARY TRACT INFECTION IN PREGNANCY, THIRD TRIMESTER
O24011	PRE-EXISTING DIABETES MELLITUS, TYPE 1, IN PREGNANCY, FIRST TRIMESTER
O24012	PRE-EXISTING DIABETES MELLITUS, TYPE 1, IN PREGNANCY, SECOND TRIMESTER
O24013	PRE-EXISTING DIABETES MELLITUS, TYPE 1, IN PREGNANCY, THIRD TRIMESTER
O24019	PRE-EXISTING DIABETES MELLITUS, TYPE 1, IN PREGNANCY, UNSPECIFIED TRIMESTER
O24111	PRE-EXISTING DIABETES MELLITUS, TYPE 2, IN PREGNANCY, FIRST TRIMESTER
O24112	PRE-EXISTING DIABETES MELLITUS, TYPE 2, IN PREGNANCY, SECOND TRIMESTER
O24113	PRE-EXISTING DIABETES MELLITUS, TYPE 2, IN PREGNANCY, THIRD TRIMESTER
O24119	PRE-EXISTING DIABETES MELLITUS, TYPE 2, IN PREGNANCY, UNSPECIFIED TRIMESTER
O24311	UNSPECIFIED PRE-EXISTING DIABETES MELLITUS IN PREGNANCY, FIRST TRIMESTER
O24312	UNSPECIFIED PRE-EXISTING DIABETES MELLITUS IN PREGNANCY, SECOND TRIMESTER
O24313	UNSPECIFIED PRE-EXISTING DIABETES MELLITUS IN PREGNANCY, THIRD TRIMESTER

Step 7 (diagnosis of pregnancy)	
Required diagnosis: 1	
Look back timeframe: 310 days	
ICD-10 Code	Description
O24319	UNSPECIFIED PRE-EXISTING DIABETES MELLITUS IN PREGNANCY, UNSPECIFIED TRIMESTER
O24410	GESTATIONAL DIABETES MELLITUS IN PREGNANCY, DIET CONTROLLED
O24414	GESTATIONAL DIABETES MELLITUS IN PREGNANCY, INSULIN CONTROLLED
O24419	GESTATIONAL DIABETES MELLITUS IN PREGNANCY, UNSPECIFIED CONTROL
O24811	OTHER PRE-EXISTING DIABETES MELLITUS IN PREGNANCY, FIRST TRIMESTER
O24812	OTHER PRE-EXISTING DIABETES MELLITUS IN PREGNANCY, SECOND TRIMESTER
O24813	OTHER PRE-EXISTING DIABETES MELLITUS IN PREGNANCY, THIRD TRIMESTER
O24819	OTHER PRE-EXISTING DIABETES MELLITUS IN PREGNANCY, UNSPECIFIED TRIMESTER
O24911	UNSPECIFIED DIABETES MELLITUS IN PREGNANCY, FIRST TRIMESTER
O24912	UNSPECIFIED DIABETES MELLITUS IN PREGNANCY, SECOND TRIMESTER
O24913	UNSPECIFIED DIABETES MELLITUS IN PREGNANCY, THIRD TRIMESTER
O24919	UNSPECIFIED DIABETES MELLITUS IN PREGNANCY, UNSPECIFIED TRIMESTER
O2510	MALNUTRITION IN PREGNANCY, UNSPECIFIED TRIMESTER
O2511	MALNUTRITION IN PREGNANCY, FIRST TRIMESTER
O2512	MALNUTRITION IN PREGNANCY, SECOND TRIMESTER
O2513	MALNUTRITION IN PREGNANCY, THIRD TRIMESTER
O2600	EXCESSIVE WEIGHT GAIN IN PREGNANCY, UNSPECIFIED TRIMESTER
O2601	EXCESSIVE WEIGHT GAIN IN PREGNANCY, FIRST TRIMESTER
O2602	EXCESSIVE WEIGHT GAIN IN PREGNANCY, SECOND TRIMESTER
O2603	EXCESSIVE WEIGHT GAIN IN PREGNANCY, THIRD TRIMESTER
O2610	LOW WEIGHT GAIN IN PREGNANCY, UNSPECIFIED TRIMESTER
O2611	LOW WEIGHT GAIN IN PREGNANCY, FIRST TRIMESTER
O2612	LOW WEIGHT GAIN IN PREGNANCY, SECOND TRIMESTER
O2613	LOW WEIGHT GAIN IN PREGNANCY, THIRD TRIMESTER
O2620	PREGNANCY CARE FOR PATIENT WITH RECURRENT PREGNANCY LOSS, UNSPECIFIED TRIMESTER
O2621	PREGNANCY CARE FOR PATIENT WITH RECURRENT PREGNANCY LOSS, FIRST TRIMESTER
O2622	PREGNANCY CARE FOR PATIENT WITH RECURRENT PREGNANCY LOSS, SECOND TRIMESTER
O2623	PREGNANCY CARE FOR PATIENT WITH RECURRENT PREGNANCY LOSS, THIRD TRIMESTER
O2630	RETAINED INTRAUTERINE CONTRACEPTIVE DEVICE IN PREGNANCY, UNSPECIFIED TRIMESTER

Step 7 (diagnosis of pregnancy)	
Required diagnosis: 1	
Look back timeframe: 310 days	
ICD-10 Code	Description
O2631	RETAINED INTRAUTERINE CONTRACEPTIVE DEVICE IN PREGNANCY, FIRST TRIMESTER
O2632	RETAINED INTRAUTERINE CONTRACEPTIVE DEVICE IN PREGNANCY, SECOND TRIMESTER
O2633	RETAINED INTRAUTERINE CONTRACEPTIVE DEVICE IN PREGNANCY, THIRD TRIMESTER
O2640	HERPES GESTATIONIS, UNSPECIFIED TRIMESTER
O2641	HERPES GESTATIONIS, FIRST TRIMESTER
O2642	HERPES GESTATIONIS, SECOND TRIMESTER
O2643	HERPES GESTATIONIS, THIRD TRIMESTER
O26611	LIVER AND BILIARY TRACT DISORDERS IN PREGNANCY, FIRST TRIMESTER
O26612	LIVER AND BILIARY TRACT DISORDERS IN PREGNANCY, SECOND TRIMESTER
O26613	LIVER AND BILIARY TRACT DISORDERS IN PREGNANCY, THIRD TRIMESTER
O26619	LIVER AND BILIARY TRACT DISORDERS IN PREGNANCY, UNSPECIFIED TRIMESTER
O26711	SUBLUXATION OF SYMPHYSIS (PUBIS) IN PREGNANCY, FIRST TRIMESTER
O26712	SUBLUXATION OF SYMPHYSIS (PUBIS) IN PREGNANCY, SECOND TRIMESTER
O26713	SUBLUXATION OF SYMPHYSIS (PUBIS) IN PREGNANCY, THIRD TRIMESTER
O26719	SUBLUXATION OF SYMPHYSIS (PUBIS) IN PREGNANCY, UNSPECIFIED TRIMESTER
O26811	PREGNANCY RELATED EXHAUSTION AND FATIGUE, FIRST TRIMESTER
O26812	PREGNANCY RELATED EXHAUSTION AND FATIGUE, SECOND TRIMESTER
O26813	PREGNANCY RELATED EXHAUSTION AND FATIGUE, THIRD TRIMESTER
O26819	PREGNANCY RELATED EXHAUSTION AND FATIGUE, UNSPECIFIED TRIMESTER
O26821	PREGNANCY RELATED PERIPHERAL NEURITIS, FIRST TRIMESTER
O26822	PREGNANCY RELATED PERIPHERAL NEURITIS, SECOND TRIMESTER
O26823	PREGNANCY RELATED PERIPHERAL NEURITIS, THIRD TRIMESTER
O26829	PREGNANCY RELATED PERIPHERAL NEURITIS, UNSPECIFIED TRIMESTER
O26831	PREGNANCY RELATED RENAL DISEASE, FIRST TRIMESTER
O26832	PREGNANCY RELATED RENAL DISEASE, SECOND TRIMESTER
O26833	PREGNANCY RELATED RENAL DISEASE, THIRD TRIMESTER
O26839	PREGNANCY RELATED RENAL DISEASE, UNSPECIFIED TRIMESTER
O26841	UTERINE SIZE-DATE DISCREPANCY, FIRST TRIMESTER
O26842	UTERINE SIZE-DATE DISCREPANCY, SECOND TRIMESTER
O26843	UTERINE SIZE-DATE DISCREPANCY, THIRD TRIMESTER

Step 7 (diagnosis of pregnancy)	
Required diagnosis: 1	
Look back timeframe: 310 days	
ICD-10 Code	Description
O26849	UTERINE SIZE-DATE DISCREPANCY, UNSPECIFIED TRIMESTER
O26851	SPOTTING COMPLICATING PREGNANCY, FIRST TRIMESTER
O26852	SPOTTING COMPLICATING PREGNANCY, SECOND TRIMESTER
O26853	SPOTTING COMPLICATING PREGNANCY, THIRD TRIMESTER
O26859	SPOTTING COMPLICATING PREGNANCY, UNSPECIFIED TRIMESTER
O2686	PRURITIC URTICARIAL PAPULES AND PLAQUES OF PREGNANCY (PUPPP)
O26872	CERVICAL SHORTENING, SECOND TRIMESTER
O26873	CERVICAL SHORTENING, THIRD TRIMESTER
O26879	CERVICAL SHORTENING, UNSPECIFIED TRIMESTER
O26891	OTHER SPECIFIED PREGNANCY RELATED CONDITIONS, FIRST TRIMESTER
O26892	OTHER SPECIFIED PREGNANCY RELATED CONDITIONS, SECOND TRIMESTER
O26893	OTHER SPECIFIED PREGNANCY RELATED CONDITIONS, THIRD TRIMESTER
O26899	OTHER SPECIFIED PREGNANCY RELATED CONDITIONS, UNSPECIFIED TRIMESTER
O2690	PREGNANCY RELATED CONDITIONS, UNSPECIFIED, UNSPECIFIED TRIMESTER
O2691	PREGNANCY RELATED CONDITIONS, UNSPECIFIED, FIRST TRIMESTER
O2692	PREGNANCY RELATED CONDITIONS, UNSPECIFIED, SECOND TRIMESTER
O2693	PREGNANCY RELATED CONDITIONS, UNSPECIFIED, THIRD TRIMESTER
O29011	ASPIRATION PNEUMONITIS DUE TO ANESTHESIA DURING PREGNANCY, FIRST TRIMESTER
O29012	ASPIRATION PNEUMONITIS DUE TO ANESTHESIA DURING PREGNANCY, SECOND TRIMESTER
O29013	ASPIRATION PNEUMONITIS DUE TO ANESTHESIA DURING PREGNANCY, THIRD TRIMESTER
O29019	ASPIRATION PNEUMONITIS DUE TO ANESTHESIA DURING PREGNANCY, UNSPECIFIED TRIMESTER
O29021	PRESSURE COLLAPSE OF LUNG DUE TO ANESTHESIA DURING PREGNANCY, FIRST TRIMESTER
O29022	PRESSURE COLLAPSE OF LUNG DUE TO ANESTHESIA DURING PREGNANCY, SECOND TRIMESTER
O29023	PRESSURE COLLAPSE OF LUNG DUE TO ANESTHESIA DURING PREGNANCY, THIRD TRIMESTER
O29029	PRESSURE COLLAPSE OF LUNG DUE TO ANESTHESIA DURING PREGNANCY, UNSPECIFIED TRIMESTER
O29091	OTHER PULMONARY COMPLICATIONS OF ANESTHESIA DURING PREGNANCY, FIRST TRIMESTER
O29092	OTHER PULMONARY COMPLICATIONS OF ANESTHESIA DURING PREGNANCY, SECOND TRIMESTER

Step 7 (diagnosis of pregnancy)	
Required diagnosis: 1	
Look back timeframe: 310 days	
ICD-10 Code	Description
O29093	OTHER PULMONARY COMPLICATIONS OF ANESTHESIA DURING PREGNANCY, THIRD TRIMESTER
O29099	OTHER PULMONARY COMPLICATIONS OF ANESTHESIA DURING PREGNANCY, UNSPECIFIED TRIMESTER
O29111	CARDIAC ARREST DUE TO ANESTHESIA DURING PREGNANCY, FIRST TRIMESTER
O29112	CARDIAC ARREST DUE TO ANESTHESIA DURING PREGNANCY, SECOND TRIMESTER
O29113	CARDIAC ARREST DUE TO ANESTHESIA DURING PREGNANCY, THIRD TRIMESTER
O29119	CARDIAC ARREST DUE TO ANESTHESIA DURING PREGNANCY, UNSPECIFIED TRIMESTER
O29121	CARDIAC FAILURE DUE TO ANESTHESIA DURING PREGNANCY, FIRST TRIMESTER
O29122	CARDIAC FAILURE DUE TO ANESTHESIA DURING PREGNANCY, SECOND TRIMESTER
O29123	CARDIAC FAILURE DUE TO ANESTHESIA DURING PREGNANCY, THIRD TRIMESTER
O29129	CARDIAC FAILURE DUE TO ANESTHESIA DURING PREGNANCY, UNSPECIFIED TRIMESTER
O29191	OTHER CARDIAC COMPLICATIONS OF ANESTHESIA DURING PREGNANCY, FIRST TRIMESTER
O29192	OTHER CARDIAC COMPLICATIONS OF ANESTHESIA DURING PREGNANCY, SECOND TRIMESTER
O29193	OTHER CARDIAC COMPLICATIONS OF ANESTHESIA DURING PREGNANCY, THIRD TRIMESTER
O29199	OTHER CARDIAC COMPLICATIONS OF ANESTHESIA DURING PREGNANCY, UNSPECIFIED TRIMESTER
O29211	CEREBRAL ANOXIA DUE TO ANESTHESIA DURING PREGNANCY, FIRST TRIMESTER
O29212	CEREBRAL ANOXIA DUE TO ANESTHESIA DURING PREGNANCY, SECOND TRIMESTER
O29213	CEREBRAL ANOXIA DUE TO ANESTHESIA DURING PREGNANCY, THIRD TRIMESTER
O29219	CEREBRAL ANOXIA DUE TO ANESTHESIA DURING PREGNANCY, UNSPECIFIED TRIMESTER
O29291	OTHER CENTRAL NERVOUS SYSTEM COMPLICATIONS OF ANESTHESIA DURING PREGNANCY, FIRST TRIMESTER
O29292	OTHER CENTRAL NERVOUS SYSTEM COMPLICATIONS OF ANESTHESIA DURING PREGNANCY, SECOND TRIMESTER
O29293	OTHER CENTRAL NERVOUS SYSTEM COMPLICATIONS OF ANESTHESIA DURING PREGNANCY, THIRD TRIMESTER
O29299	OTHER CENTRAL NERVOUS SYSTEM COMPLICATIONS OF ANESTHESIA DURING PREGNANCY, UNSPECIFIED TRIMESTER

Step 7 (diagnosis of pregnancy)	
Required diagnosis: 1	
Look back timeframe: 310 days	
ICD-10 Code	Description
O293X1	TOXIC REACTION TO LOCAL ANESTHESIA DURING PREGNANCY, FIRST TRIMESTER
O293X2	TOXIC REACTION TO LOCAL ANESTHESIA DURING PREGNANCY, SECOND TRIMESTER
O293X3	TOXIC REACTION TO LOCAL ANESTHESIA DURING PREGNANCY, THIRD TRIMESTER
O293X9	TOXIC REACTION TO LOCAL ANESTHESIA DURING PREGNANCY, UNSPECIFIED TRIMESTER
O2940	SPINAL AND EPIDURAL ANESTHESIA INDUCED HEADACHE DURING PREGNANCY, UNSPECIFIED TRIMESTER
O2941	SPINAL AND EPIDURAL ANESTHESIA INDUCED HEADACHE DURING PREGNANCY, FIRST TRIMESTER
O2942	SPINAL AND EPIDURAL ANESTHESIA INDUCED HEADACHE DURING PREGNANCY, SECOND TRIMESTER
O2943	SPINAL AND EPIDURAL ANESTHESIA INDUCED HEADACHE DURING PREGNANCY, THIRD TRIMESTER
O295X1	OTHER COMPLICATIONS OF SPINAL AND EPIDURAL ANESTHESIA DURING PREGNANCY, FIRST TRIMESTER
O295X2	OTHER COMPLICATIONS OF SPINAL AND EPIDURAL ANESTHESIA DURING PREGNANCY, SECOND TRIMESTER
O295X3	OTHER COMPLICATIONS OF SPINAL AND EPIDURAL ANESTHESIA DURING PREGNANCY, THIRD TRIMESTER
O295X9	OTHER COMPLICATIONS OF SPINAL AND EPIDURAL ANESTHESIA DURING PREGNANCY, UNSPECIFIED TRIMESTER
O2960	FAILED OR DIFFICULT INTUBATION FOR ANESTHESIA DURING PREGNANCY, UNSPECIFIED TRIMESTER
O2961	FAILED OR DIFFICULT INTUBATION FOR ANESTHESIA DURING PREGNANCY, FIRST TRIMESTER
O2962	FAILED OR DIFFICULT INTUBATION FOR ANESTHESIA DURING PREGNANCY, SECOND TRIMESTER
O2963	FAILED OR DIFFICULT INTUBATION FOR ANESTHESIA DURING PREGNANCY, THIRD TRIMESTER
O298X1	OTHER COMPLICATIONS OF ANESTHESIA DURING PREGNANCY, FIRST TRIMESTER
O298X2	OTHER COMPLICATIONS OF ANESTHESIA DURING PREGNANCY, SECOND TRIMESTER
O298X3	OTHER COMPLICATIONS OF ANESTHESIA DURING PREGNANCY, THIRD TRIMESTER
O298X9	OTHER COMPLICATIONS OF ANESTHESIA DURING PREGNANCY, UNSPECIFIED TRIMESTER
O2990	UNSPECIFIED COMPLICATION OF ANESTHESIA DURING PREGNANCY, UNSPECIFIED TRIMESTER
O2991	UNSPECIFIED COMPLICATION OF ANESTHESIA DURING PREGNANCY, FIRST TRIMESTER

Step 7 (diagnosis of pregnancy)	
Required diagnosis: 1	
Look back timeframe: 310 days	
ICD-10 Code	Description
O2992	UNSPECIFIED COMPLICATION OF ANESTHESIA DURING PREGNANCY, SECOND TRIMESTER
O2993	UNSPECIFIED COMPLICATION OF ANESTHESIA DURING PREGNANCY, THIRD TRIMESTER
O30001	TWIN PREGNANCY, UNSPECIFIED NUMBER OF PLACENTA AND UNSPECIFIED NUMBER OF AMNIOTIC SACS, FIRST TRIMESTER
O30002	TWIN PREGNANCY, UNSPECIFIED NUMBER OF PLACENTA AND UNSPECIFIED NUMBER OF AMNIOTIC SACS, SECOND TRIMESTER
O30003	TWIN PREGNANCY, UNSPECIFIED NUMBER OF PLACENTA AND UNSPECIFIED NUMBER OF AMNIOTIC SACS, THIRD TRIMESTER
O30011	TWIN PREGNANCY, MONOCHORIONIC/MONOAMNIOTIC, FIRST TRIMESTER
O30012	TWIN PREGNANCY, MONOCHORIONIC/MONOAMNIOTIC, SECOND TRIMESTER
O30013	TWIN PREGNANCY, MONOCHORIONIC/MONOAMNIOTIC, THIRD TRIMESTER
O30021	CONJOINED TWIN PREGNANCY, FIRST TRIMESTER
O30022	CONJOINED TWIN PREGNANCY, SECOND TRIMESTER
O30023	CONJOINED TWIN PREGNANCY, THIRD TRIMESTER
O30031	TWIN PREGNANCY, MONOCHORIONIC/DIAMNIOTIC, FIRST TRIMESTER
O30032	TWIN PREGNANCY, MONOCHORIONIC/DIAMNIOTIC, SECOND TRIMESTER
O30033	TWIN PREGNANCY, MONOCHORIONIC/DIAMNIOTIC, THIRD TRIMESTER
O30041	TWIN PREGNANCY, DICHORIONIC/DIAMNIOTIC, FIRST TRIMESTER
O30042	TWIN PREGNANCY, DICHORIONIC/DIAMNIOTIC, SECOND TRIMESTER
O30043	TWIN PREGNANCY, DICHORIONIC/DIAMNIOTIC, THIRD TRIMESTER
O30091	TWIN PREGNANCY, UNABLE TO DETERMINE NUMBER OF PLACENTA AND NUMBER OF AMNIOTIC SACS, FIRST TRIMESTER
O30092	TWIN PREGNANCY, UNABLE TO DETERMINE NUMBER OF PLACENTA AND NUMBER OF AMNIOTIC SACS, SECOND TRIMESTER
O30093	TWIN PREGNANCY, UNABLE TO DETERMINE NUMBER OF PLACENTA AND NUMBER OF AMNIOTIC SACS, THIRD TRIMESTER
O30101	TRIPLET PREGNANCY, UNSPECIFIED NUMBER OF PLACENTA AND UNSPECIFIED NUMBER OF AMNIOTIC SACS, FIRST TRIMESTER
O30102	TRIPLET PREGNANCY, UNSPECIFIED NUMBER OF PLACENTA AND UNSPECIFIED NUMBER OF AMNIOTIC SACS, SECOND TRIMESTER
O30103	TRIPLET PREGNANCY, UNSPECIFIED NUMBER OF PLACENTA AND UNSPECIFIED NUMBER OF AMNIOTIC SACS, THIRD TRIMESTER
O30111	TRIPLET PREGNANCY WITH TWO OR MORE MONOCHORIONIC FETUSES, FIRST TRIMESTER
O30112	TRIPLET PREGNANCY WITH TWO OR MORE MONOCHORIONIC FETUSES, SECOND TRIMESTER

Step 7 (diagnosis of pregnancy)	
Required diagnosis: 1	
Look back timeframe: 310 days	
ICD-10 Code	Description
O30113	TRIPLET PREGNANCY WITH TWO OR MORE MONOCHORIONIC FETUSES, THIRD TRIMESTER
O30121	TRIPLET PREGNANCY WITH TWO OR MORE MONOAMNIOTIC FETUSES, FIRST TRIMESTER
O30122	TRIPLET PREGNANCY WITH TWO OR MORE MONOAMNIOTIC FETUSES, SECOND TRIMESTER
O30123	TRIPLET PREGNANCY WITH TWO OR MORE MONOAMNIOTIC FETUSES, THIRD TRIMESTER
O30191	TRIPLET PREGNANCY, UNABLE TO DETERMINE NUMBER OF PLACENTA AND NUMBER OF AMNIOTIC SACS, FIRST TRIMESTER
O30192	TRIPLET PREGNANCY, UNABLE TO DETERMINE NUMBER OF PLACENTA AND NUMBER OF AMNIOTIC SACS, SECOND TRIMESTER
O30193	TRIPLET PREGNANCY, UNABLE TO DETERMINE NUMBER OF PLACENTA AND NUMBER OF AMNIOTIC SACS, THIRD TRIMESTER
O30201	QUADRUPLET PREGNANCY, UNSPECIFIED NUMBER OF PLACENTA AND UNSPECIFIED NUMBER OF AMNIOTIC SACS, FIRST TRIMESTER
O30202	QUADRUPLET PREGNANCY, UNSPECIFIED NUMBER OF PLACENTA AND UNSPECIFIED NUMBER OF AMNIOTIC SACS, SECOND TRIMESTER
O30203	QUADRUPLET PREGNANCY, UNSPECIFIED NUMBER OF PLACENTA AND UNSPECIFIED NUMBER OF AMNIOTIC SACS, THIRD TRIMESTER
O30211	QUADRUPLET PREGNANCY WITH TWO OR MORE MONOCHORIONIC FETUSES, FIRST TRIMESTER
O30212	QUADRUPLET PREGNANCY WITH TWO OR MORE MONOCHORIONIC FETUSES, SECOND TRIMESTER
O30213	QUADRUPLET PREGNANCY WITH TWO OR MORE MONOCHORIONIC FETUSES, THIRD TRIMESTER
O30221	QUADRUPLET PREGNANCY WITH TWO OR MORE MONOAMNIOTIC FETUSES, FIRST TRIMESTER
O30222	QUADRUPLET PREGNANCY WITH TWO OR MORE MONOAMNIOTIC FETUSES, SECOND TRIMESTER
O30223	QUADRUPLET PREGNANCY WITH TWO OR MORE MONOAMNIOTIC FETUSES, THIRD TRIMESTER
O30291	QUADRUPLET PREGNANCY, UNABLE TO DETERMINE NUMBER OF PLACENTA AND NUMBER OF AMNIOTIC SACS, FIRST TRIMESTER
O30292	QUADRUPLET PREGNANCY, UNABLE TO DETERMINE NUMBER OF PLACENTA AND NUMBER OF AMNIOTIC SACS, SECOND TRIMESTER
O30293	QUADRUPLET PREGNANCY, UNABLE TO DETERMINE NUMBER OF PLACENTA AND NUMBER OF AMNIOTIC SACS, THIRD TRIMESTER
O3101X0	PAPYRACEOUS FETUS, FIRST TRIMESTER, NOT APPLICABLE OR UNSPECIFIED
O3101X1	PAPYRACEOUS FETUS, FIRST TRIMESTER, FETUS 1
O3101X2	PAPYRACEOUS FETUS, FIRST TRIMESTER, FETUS 2
O3101X3	PAPYRACEOUS FETUS, FIRST TRIMESTER, FETUS 3
O3101X4	PAPYRACEOUS FETUS, FIRST TRIMESTER, FETUS 4

Step 7 (diagnosis of pregnancy)	
Required diagnosis: 1	
Look back timeframe: 310 days	
ICD-10 Code	Description
O3101X5	PAPYRACEOUS FETUS, FIRST TRIMESTER, FETUS 5
O3101X9	PAPYRACEOUS FETUS, FIRST TRIMESTER, OTHER FETUS
O3102X0	PAPYRACEOUS FETUS, SECOND TRIMESTER, NOT APPLICABLE OR UNSPECIFIED
O3102X1	PAPYRACEOUS FETUS, SECOND TRIMESTER, FETUS 1
O3102X2	PAPYRACEOUS FETUS, SECOND TRIMESTER, FETUS 2
O3102X3	PAPYRACEOUS FETUS, SECOND TRIMESTER, FETUS 3
O3102X4	PAPYRACEOUS FETUS, SECOND TRIMESTER, FETUS 4
O3102X5	PAPYRACEOUS FETUS, SECOND TRIMESTER, FETUS 5
O3102X9	PAPYRACEOUS FETUS, SECOND TRIMESTER, OTHER FETUS
O3103X0	PAPYRACEOUS FETUS, THIRD TRIMESTER, NOT APPLICABLE OR UNSPECIFIED
O3103X1	PAPYRACEOUS FETUS, THIRD TRIMESTER, FETUS 1
O3103X2	PAPYRACEOUS FETUS, THIRD TRIMESTER, FETUS 2
O3103X3	PAPYRACEOUS FETUS, THIRD TRIMESTER, FETUS 3
O3103X4	PAPYRACEOUS FETUS, THIRD TRIMESTER, FETUS 4
O3103X5	PAPYRACEOUS FETUS, THIRD TRIMESTER, FETUS 5
O3103X9	PAPYRACEOUS FETUS, THIRD TRIMESTER, OTHER FETUS
O3111X0	CONTINUING PREGNANCY AFTER SPONTANEOUS ABORTION OF ONE FETUS OR MORE, FIRST TRIMESTER, NOT APPLICABLE OR UNSPECIFIED
O3111X1	CONTINUING PREGNANCY AFTER SPONTANEOUS ABORTION OF ONE FETUS OR MORE, FIRST TRIMESTER, FETUS 1
O3111X2	CONTINUING PREGNANCY AFTER SPONTANEOUS ABORTION OF ONE FETUS OR MORE, FIRST TRIMESTER, FETUS 2
O3112X0	CONTINUING PREGNANCY AFTER SPONTANEOUS ABORTION OF ONE FETUS OR MORE, SECOND TRIMESTER, NOT APPLICABLE OR UNSPECIFIED
O3112X1	CONTINUING PREGNANCY AFTER SPONTANEOUS ABORTION OF ONE FETUS OR MORE, SECOND TRIMESTER, FETUS 1
O3112X2	CONTINUING PREGNANCY AFTER SPONTANEOUS ABORTION OF ONE FETUS OR MORE, SECOND TRIMESTER, FETUS 2
O3113X0	CONTINUING PREGNANCY AFTER SPONTANEOUS ABORTION OF ONE FETUS OR MORE, THIRD TRIMESTER, NOT APPLICABLE OR UNSPECIFIED
O3113X1	CONTINUING PREGNANCY AFTER SPONTANEOUS ABORTION OF ONE FETUS OR MORE, THIRD TRIMESTER, FETUS 1
O3113X2	CONTINUING PREGNANCY AFTER SPONTANEOUS ABORTION OF ONE FETUS OR MORE, THIRD TRIMESTER, FETUS 2
O3121X0	CONTINUING PREGNANCY AFTER INTRAUTERINE DEATH OF ONE FETUS OR MORE, FIRST TRIMESTER, NOT APPLICABLE OR UNSPECIFIED
O3121X1	CONTINUING PREGNANCY AFTER INTRAUTERINE DEATH OF ONE FETUS OR MORE, FIRST TRIMESTER, FETUS 1
O3121X2	CONTINUING PREGNANCY AFTER INTRAUTERINE DEATH OF ONE FETUS OR MORE, FIRST TRIMESTER, FETUS 2

Step 7 (diagnosis of pregnancy)	
Required diagnosis: 1	
Look back timeframe: 310 days	
ICD-10 Code	Description
O3122X0	CONTINUING PREGNANCY AFTER INTRAUTERINE DEATH OF ONE FETUS OR MORE, SECOND TRIMESTER, NOT APPLICABLE OR UNSPECIFIED
O3122X1	CONTINUING PREGNANCY AFTER INTRAUTERINE DEATH OF ONE FETUS OR MORE, SECOND TRIMESTER, FETUS 1
O3122X2	CONTINUING PREGNANCY AFTER INTRAUTERINE DEATH OF ONE FETUS OR MORE, SECOND TRIMESTER, FETUS 2
O3123X0	CONTINUING PREGNANCY AFTER INTRAUTERINE DEATH OF ONE FETUS OR MORE, THIRD TRIMESTER, NOT APPLICABLE OR UNSPECIFIED
O3123X1	CONTINUING PREGNANCY AFTER INTRAUTERINE DEATH OF ONE FETUS OR MORE, THIRD TRIMESTER, FETUS 1
O3123X2	CONTINUING PREGNANCY AFTER INTRAUTERINE DEATH OF ONE FETUS OR MORE, THIRD TRIMESTER, FETUS 2
O3131X0	CONTINUING PREGNANCY AFTER ELECTIVE FETAL REDUCTION OF ONE FETUS OR MORE, FIRST TRIMESTER, NOT APPLICABLE OR UNSPECIFIED
O3131X1	CONTINUING PREGNANCY AFTER ELECTIVE FETAL REDUCTION OF ONE FETUS OR MORE, FIRST TRIMESTER, FETUS 1
O3131X2	CONTINUING PREGNANCY AFTER ELECTIVE FETAL REDUCTION OF ONE FETUS OR MORE, FIRST TRIMESTER, FETUS 2
O3131X3	CONTINUING PREGNANCY AFTER ELECTIVE FETAL REDUCTION OF ONE FETUS OR MORE, FIRST TRIMESTER, FETUS 3
O3131X4	CONTINUING PREGNANCY AFTER ELECTIVE FETAL REDUCTION OF ONE FETUS OR MORE, FIRST TRIMESTER, FETUS 4
O3131X5	CONTINUING PREGNANCY AFTER ELECTIVE FETAL REDUCTION OF ONE FETUS OR MORE, FIRST TRIMESTER, FETUS 5
O3131X9	CONTINUING PREGNANCY AFTER ELECTIVE FETAL REDUCTION OF ONE FETUS OR MORE, FIRST TRIMESTER, OTHER FETUS
O3132X0	CONTINUING PREGNANCY AFTER ELECTIVE FETAL REDUCTION OF ONE FETUS OR MORE, SECOND TRIMESTER, NOT APPLICABLE OR UNSPECIFIED
O3132X1	CONTINUING PREGNANCY AFTER ELECTIVE FETAL REDUCTION OF ONE FETUS OR MORE, SECOND TRIMESTER, FETUS 1
O3132X2	CONTINUING PREGNANCY AFTER ELECTIVE FETAL REDUCTION OF ONE FETUS OR MORE, SECOND TRIMESTER, FETUS 2
O3132X3	CONTINUING PREGNANCY AFTER ELECTIVE FETAL REDUCTION OF ONE FETUS OR MORE, SECOND TRIMESTER, FETUS 3
O3132X4	CONTINUING PREGNANCY AFTER ELECTIVE FETAL REDUCTION OF ONE FETUS OR MORE, SECOND TRIMESTER, FETUS 4
O3132X5	CONTINUING PREGNANCY AFTER ELECTIVE FETAL REDUCTION OF ONE FETUS OR MORE, SECOND TRIMESTER, FETUS 5
O3132X9	CONTINUING PREGNANCY AFTER ELECTIVE FETAL REDUCTION OF ONE FETUS OR MORE, SECOND TRIMESTER, OTHER FETUS
O3133X0	CONTINUING PREGNANCY AFTER ELECTIVE FETAL REDUCTION OF ONE FETUS OR MORE, THIRD TRIMESTER, NOT APPLICABLE OR UNSPECIFIED

Step 7 (diagnosis of pregnancy)	
Required diagnosis: 1	
Look back timeframe: 310 days	
ICD-10 Code	Description
O3133X1	CONTINUING PREGNANCY AFTER ELECTIVE FETAL REDUCTION OF ONE FETUS OR MORE, THIRD TRIMESTER, FETUS 1
O3133X2	CONTINUING PREGNANCY AFTER ELECTIVE FETAL REDUCTION OF ONE FETUS OR MORE, THIRD TRIMESTER, FETUS 2
O3133X3	CONTINUING PREGNANCY AFTER ELECTIVE FETAL REDUCTION OF ONE FETUS OR MORE, THIRD TRIMESTER, FETUS 3
O3133X4	CONTINUING PREGNANCY AFTER ELECTIVE FETAL REDUCTION OF ONE FETUS OR MORE, THIRD TRIMESTER, FETUS 4
O3133X5	CONTINUING PREGNANCY AFTER ELECTIVE FETAL REDUCTION OF ONE FETUS OR MORE, THIRD TRIMESTER, FETUS 5
O3133X9	CONTINUING PREGNANCY AFTER ELECTIVE FETAL REDUCTION OF ONE FETUS OR MORE, THIRD TRIMESTER, OTHER FETUS
O350XX0	MATERNAL CARE FOR (SUSPECTED) CENTRAL NERVOUS SYSTEM MALFORMATION IN FETUS, NOT APPLICABLE OR UNSPECIFIED
O350XX1	MATERNAL CARE FOR (SUSPECTED) CENTRAL NERVOUS SYSTEM MALFORMATION IN FETUS, FETUS 1
O350XX2	MATERNAL CARE FOR (SUSPECTED) CENTRAL NERVOUS SYSTEM MALFORMATION IN FETUS, FETUS 2
O350XX3	MATERNAL CARE FOR (SUSPECTED) CENTRAL NERVOUS SYSTEM MALFORMATION IN FETUS, FETUS 3
O350XX4	MATERNAL CARE FOR (SUSPECTED) CENTRAL NERVOUS SYSTEM MALFORMATION IN FETUS, FETUS 4
O350XX5	MATERNAL CARE FOR (SUSPECTED) CENTRAL NERVOUS SYSTEM MALFORMATION IN FETUS, FETUS 5
O350XX9	MATERNAL CARE FOR (SUSPECTED) CENTRAL NERVOUS SYSTEM MALFORMATION IN FETUS, OTHER FETUS
O351XX0	MATERNAL CARE FOR (SUSPECTED) CHROMOSOMAL ABNORMALITY IN FETUS, NOT APPLICABLE OR UNSPECIFIED
O351XX1	MATERNAL CARE FOR (SUSPECTED) CHROMOSOMAL ABNORMALITY IN FETUS, FETUS 1
O351XX2	MATERNAL CARE FOR (SUSPECTED) CHROMOSOMAL ABNORMALITY IN FETUS, FETUS 2
O351XX3	MATERNAL CARE FOR (SUSPECTED) CHROMOSOMAL ABNORMALITY IN FETUS, FETUS 3
O351XX4	MATERNAL CARE FOR (SUSPECTED) CHROMOSOMAL ABNORMALITY IN FETUS, FETUS 4
O351XX5	MATERNAL CARE FOR (SUSPECTED) CHROMOSOMAL ABNORMALITY IN FETUS, FETUS 5
O351XX9	MATERNAL CARE FOR (SUSPECTED) CHROMOSOMAL ABNORMALITY IN FETUS, OTHER FETUS
O352XX0	MATERNAL CARE FOR (SUSPECTED) HEREDITARY DISEASE IN FETUS, NOT APPLICABLE OR UNSPECIFIED
O352XX1	MATERNAL CARE FOR (SUSPECTED) HEREDITARY DISEASE IN FETUS, FETUS 1

Step 7 (diagnosis of pregnancy)	
Required diagnosis: 1	
Look back timeframe: 310 days	
ICD-10 Code	Description
O352XX2	MATERNAL CARE FOR (SUSPECTED) HEREDITARY DISEASE IN FETUS, FETUS 2
O352XX3	MATERNAL CARE FOR (SUSPECTED) HEREDITARY DISEASE IN FETUS, FETUS 3
O352XX4	MATERNAL CARE FOR (SUSPECTED) HEREDITARY DISEASE IN FETUS, FETUS 4
O352XX5	MATERNAL CARE FOR (SUSPECTED) HEREDITARY DISEASE IN FETUS, FETUS 5
O352XX9	MATERNAL CARE FOR (SUSPECTED) HEREDITARY DISEASE IN FETUS, OTHER FETUS
O354XX0	MATERNAL CARE FOR (SUSPECTED) DAMAGE TO FETUS FROM ALCOHOL, NOT APPLICABLE OR UNSPECIFIED
O354XX1	MATERNAL CARE FOR (SUSPECTED) DAMAGE TO FETUS FROM ALCOHOL, FETUS 1
O354XX2	MATERNAL CARE FOR (SUSPECTED) DAMAGE TO FETUS FROM ALCOHOL, FETUS 2
O354XX3	MATERNAL CARE FOR (SUSPECTED) DAMAGE TO FETUS FROM ALCOHOL, FETUS 3
O354XX4	MATERNAL CARE FOR (SUSPECTED) DAMAGE TO FETUS FROM ALCOHOL, FETUS 4
O354XX5	MATERNAL CARE FOR (SUSPECTED) DAMAGE TO FETUS FROM ALCOHOL, FETUS 5
O354XX9	MATERNAL CARE FOR (SUSPECTED) DAMAGE TO FETUS FROM ALCOHOL, OTHER FETUS
O355XX0	MATERNAL CARE FOR (SUSPECTED) DAMAGE TO FETUS BY DRUGS, NOT APPLICABLE OR UNSPECIFIED
O355XX1	MATERNAL CARE FOR (SUSPECTED) DAMAGE TO FETUS BY DRUGS, FETUS 1
O355XX2	MATERNAL CARE FOR (SUSPECTED) DAMAGE TO FETUS BY DRUGS, FETUS 2
O355XX3	MATERNAL CARE FOR (SUSPECTED) DAMAGE TO FETUS BY DRUGS, FETUS 3
O355XX4	MATERNAL CARE FOR (SUSPECTED) DAMAGE TO FETUS BY DRUGS, FETUS 4
O355XX5	MATERNAL CARE FOR (SUSPECTED) DAMAGE TO FETUS BY DRUGS, FETUS 5
O355XX9	MATERNAL CARE FOR (SUSPECTED) DAMAGE TO FETUS BY DRUGS, OTHER FETUS
O356XX0	MATERNAL CARE FOR (SUSPECTED) DAMAGE TO FETUS BY RADIATION, NOT APPLICABLE OR UNSPECIFIED
O356XX1	MATERNAL CARE FOR (SUSPECTED) DAMAGE TO FETUS BY RADIATION, FETUS 1
O356XX2	MATERNAL CARE FOR (SUSPECTED) DAMAGE TO FETUS BY RADIATION, FETUS 2

Step 7 (diagnosis of pregnancy)	
Required diagnosis: 1	
Look back timeframe: 310 days	
ICD-10 Code	Description
O356XX3	MATERNAL CARE FOR (SUSPECTED) DAMAGE TO FETUS BY RADIATION, FETUS 3
O356XX4	MATERNAL CARE FOR (SUSPECTED) DAMAGE TO FETUS BY RADIATION, FETUS 4
O356XX5	MATERNAL CARE FOR (SUSPECTED) DAMAGE TO FETUS BY RADIATION, FETUS 5
O356XX9	MATERNAL CARE FOR (SUSPECTED) DAMAGE TO FETUS BY RADIATION, OTHER FETUS
O357XX0	MATERNAL CARE FOR (SUSPECTED) DAMAGE TO FETUS BY OTHER MEDICAL PROCEDURES, NOT APPLICABLE OR UNSPECIFIED
O357XX1	MATERNAL CARE FOR (SUSPECTED) DAMAGE TO FETUS BY OTHER MEDICAL PROCEDURES, FETUS 1
O357XX2	MATERNAL CARE FOR (SUSPECTED) DAMAGE TO FETUS BY OTHER MEDICAL PROCEDURES, FETUS 2
O357XX3	MATERNAL CARE FOR (SUSPECTED) DAMAGE TO FETUS BY OTHER MEDICAL PROCEDURES, FETUS 3
O357XX4	MATERNAL CARE FOR (SUSPECTED) DAMAGE TO FETUS BY OTHER MEDICAL PROCEDURES, FETUS 4
O357XX5	MATERNAL CARE FOR (SUSPECTED) DAMAGE TO FETUS BY OTHER MEDICAL PROCEDURES, FETUS 5
O357XX9	MATERNAL CARE FOR (SUSPECTED) DAMAGE TO FETUS BY OTHER MEDICAL PROCEDURES, OTHER FETUS
O358XX0	MATERNAL CARE FOR OTHER (SUSPECTED) FETAL ABNORMALITY AND DAMAGE, NOT APPLICABLE OR UNSPECIFIED
O358XX1	MATERNAL CARE FOR OTHER (SUSPECTED) FETAL ABNORMALITY AND DAMAGE, FETUS 1
O358XX2	MATERNAL CARE FOR OTHER (SUSPECTED) FETAL ABNORMALITY AND DAMAGE, FETUS 2
O358XX3	MATERNAL CARE FOR OTHER (SUSPECTED) FETAL ABNORMALITY AND DAMAGE, FETUS 3
O358XX4	MATERNAL CARE FOR OTHER (SUSPECTED) FETAL ABNORMALITY AND DAMAGE, FETUS 4
O358XX5	MATERNAL CARE FOR OTHER (SUSPECTED) FETAL ABNORMALITY AND DAMAGE, FETUS 5
O358XX9	MATERNAL CARE FOR OTHER (SUSPECTED) FETAL ABNORMALITY AND DAMAGE, OTHER FETUS
O359XX0	MATERNAL CARE FOR (SUSPECTED) FETAL ABNORMALITY AND DAMAGE, UNSPECIFIED, NOT APPLICABLE OR UNSPECIFIED
O359XX1	MATERNAL CARE FOR (SUSPECTED) FETAL ABNORMALITY AND DAMAGE, UNSPECIFIED, FETUS 1
O359XX2	MATERNAL CARE FOR (SUSPECTED) FETAL ABNORMALITY AND DAMAGE, UNSPECIFIED, FETUS 2
O359XX3	MATERNAL CARE FOR (SUSPECTED) FETAL ABNORMALITY AND DAMAGE, UNSPECIFIED, FETUS 3

Step 7 (diagnosis of pregnancy)	
Required diagnosis: 1	
Look back timeframe: 310 days	
ICD-10 Code	Description
O359XX4	MATERNAL CARE FOR (SUSPECTED) FETAL ABNORMALITY AND DAMAGE, UNSPECIFIED, FETUS 4
O359XX5	MATERNAL CARE FOR (SUSPECTED) FETAL ABNORMALITY AND DAMAGE, UNSPECIFIED, FETUS 5
O359XX9	MATERNAL CARE FOR (SUSPECTED) FETAL ABNORMALITY AND DAMAGE, UNSPECIFIED, OTHER FETUS
O368120	DECREASED FETAL MOVEMENTS, SECOND TRIMESTER, NOT APPLICABLE OR UNSPECIFIED
O368121	DECREASED FETAL MOVEMENTS, SECOND TRIMESTER, FETUS 1
O368122	DECREASED FETAL MOVEMENTS, SECOND TRIMESTER, FETUS 2
O368123	DECREASED FETAL MOVEMENTS, SECOND TRIMESTER, FETUS 3
O368124	DECREASED FETAL MOVEMENTS, SECOND TRIMESTER, FETUS 4
O368125	DECREASED FETAL MOVEMENTS, SECOND TRIMESTER, FETUS 5
O368129	DECREASED FETAL MOVEMENTS, SECOND TRIMESTER, OTHER FETUS
O368130	DECREASED FETAL MOVEMENTS, THIRD TRIMESTER, NOT APPLICABLE OR UNSPECIFIED
O368131	DECREASED FETAL MOVEMENTS, THIRD TRIMESTER, FETUS 1
O368132	DECREASED FETAL MOVEMENTS, THIRD TRIMESTER, FETUS 2
O368133	DECREASED FETAL MOVEMENTS, THIRD TRIMESTER, FETUS 3
O368134	DECREASED FETAL MOVEMENTS, THIRD TRIMESTER, FETUS 4
O368135	DECREASED FETAL MOVEMENTS, THIRD TRIMESTER, FETUS 5
O368139	DECREASED FETAL MOVEMENTS, THIRD TRIMESTER, OTHER FETUS
O368190	DECREASED FETAL MOVEMENTS, UNSPECIFIED TRIMESTER, NOT APPLICABLE OR UNSPECIFIED
O368191	DECREASED FETAL MOVEMENTS, UNSPECIFIED TRIMESTER, FETUS 1
O368192	DECREASED FETAL MOVEMENTS, UNSPECIFIED TRIMESTER, FETUS 2
O368193	DECREASED FETAL MOVEMENTS, UNSPECIFIED TRIMESTER, FETUS 3
O368194	DECREASED FETAL MOVEMENTS, UNSPECIFIED TRIMESTER, FETUS 4
O368195	DECREASED FETAL MOVEMENTS, UNSPECIFIED TRIMESTER, FETUS 5
O368199	DECREASED FETAL MOVEMENTS, UNSPECIFIED TRIMESTER, OTHER FETUS
O368210	FETAL ANEMIA AND THROMBOCYTOPENIA, FIRST TRIMESTER, NOT APPLICABLE OR UNSPECIFIED
O368211	FETAL ANEMIA AND THROMBOCYTOPENIA, FIRST TRIMESTER, FETUS 1
O368212	FETAL ANEMIA AND THROMBOCYTOPENIA, FIRST TRIMESTER, FETUS 2
O368213	FETAL ANEMIA AND THROMBOCYTOPENIA, FIRST TRIMESTER, FETUS 3
O368214	FETAL ANEMIA AND THROMBOCYTOPENIA, FIRST TRIMESTER, FETUS 4
O368215	FETAL ANEMIA AND THROMBOCYTOPENIA, FIRST TRIMESTER, FETUS 5
O368219	FETAL ANEMIA AND THROMBOCYTOPENIA, FIRST TRIMESTER, OTHER FETUS
O368220	FETAL ANEMIA AND THROMBOCYTOPENIA, SECOND TRIMESTER, NOT APPLICABLE OR UNSPECIFIED

Step 7 (diagnosis of pregnancy)	
Required diagnosis: 1	
Look back timeframe: 310 days	
ICD-10 Code	Description
O368221	FETAL ANEMIA AND THROMBOCYTOPENIA, SECOND TRIMESTER, FETUS 1
O368222	FETAL ANEMIA AND THROMBOCYTOPENIA, SECOND TRIMESTER, FETUS 2
O368223	FETAL ANEMIA AND THROMBOCYTOPENIA, SECOND TRIMESTER, FETUS 3
O368224	FETAL ANEMIA AND THROMBOCYTOPENIA, SECOND TRIMESTER, FETUS 4
O368225	FETAL ANEMIA AND THROMBOCYTOPENIA, SECOND TRIMESTER, FETUS 5
O368229	FETAL ANEMIA AND THROMBOCYTOPENIA, SECOND TRIMESTER, OTHER FETUS
O368230	FETAL ANEMIA AND THROMBOCYTOPENIA, THIRD TRIMESTER, NOT APPLICABLE OR UNSPECIFIED
O368231	FETAL ANEMIA AND THROMBOCYTOPENIA, THIRD TRIMESTER, FETUS 1
O368232	FETAL ANEMIA AND THROMBOCYTOPENIA, THIRD TRIMESTER, FETUS 2
O368233	FETAL ANEMIA AND THROMBOCYTOPENIA, THIRD TRIMESTER, FETUS 3
O368234	FETAL ANEMIA AND THROMBOCYTOPENIA, THIRD TRIMESTER, FETUS 4
O368235	FETAL ANEMIA AND THROMBOCYTOPENIA, THIRD TRIMESTER, FETUS 5
O368239	FETAL ANEMIA AND THROMBOCYTOPENIA, THIRD TRIMESTER, OTHER FETUS
O401XX0	POLYHYDRAMNIOS, FIRST TRIMESTER, NOT APPLICABLE OR UNSPECIFIED
O401XX1	POLYHYDRAMNIOS, FIRST TRIMESTER, FETUS 1
O401XX2	POLYHYDRAMNIOS, FIRST TRIMESTER, FETUS 2
O401XX3	POLYHYDRAMNIOS, FIRST TRIMESTER, FETUS 3
O401XX4	POLYHYDRAMNIOS, FIRST TRIMESTER, FETUS 4
O401XX5	POLYHYDRAMNIOS, FIRST TRIMESTER, FETUS 5
O401XX9	POLYHYDRAMNIOS, FIRST TRIMESTER, OTHER FETUS
O402XX0	POLYHYDRAMNIOS, SECOND TRIMESTER, NOT APPLICABLE OR UNSPECIFIED
O402XX1	POLYHYDRAMNIOS, SECOND TRIMESTER, FETUS 1
O402XX2	POLYHYDRAMNIOS, SECOND TRIMESTER, FETUS 2
O402XX3	POLYHYDRAMNIOS, SECOND TRIMESTER, FETUS 3
O402XX4	POLYHYDRAMNIOS, SECOND TRIMESTER, FETUS 4
O402XX5	POLYHYDRAMNIOS, SECOND TRIMESTER, FETUS 5
O402XX9	POLYHYDRAMNIOS, SECOND TRIMESTER, OTHER FETUS
O403XX0	POLYHYDRAMNIOS, THIRD TRIMESTER, NOT APPLICABLE OR UNSPECIFIED
O403XX1	POLYHYDRAMNIOS, THIRD TRIMESTER, FETUS 1
O403XX2	POLYHYDRAMNIOS, THIRD TRIMESTER, FETUS 2
O403XX3	POLYHYDRAMNIOS, THIRD TRIMESTER, FETUS 3

Step 7 (diagnosis of pregnancy)	
Required diagnosis: 1	
Look back timeframe: 310 days	
ICD-10 Code	Description
O403XX4	POLYHYDRAMNIOS, THIRD TRIMESTER, FETUS 4
O403XX5	POLYHYDRAMNIOS, THIRD TRIMESTER, FETUS 5
O403XX9	POLYHYDRAMNIOS, THIRD TRIMESTER, OTHER FETUS
O4101X0	OLIGOHYDRAMNIOS, FIRST TRIMESTER, NOT APPLICABLE OR UNSPECIFIED
O4101X1	OLIGOHYDRAMNIOS, FIRST TRIMESTER, FETUS 1
O4101X2	OLIGOHYDRAMNIOS, FIRST TRIMESTER, FETUS 2
O4101X3	OLIGOHYDRAMNIOS, FIRST TRIMESTER, FETUS 3
O4101X4	OLIGOHYDRAMNIOS, FIRST TRIMESTER, FETUS 4
O4101X5	OLIGOHYDRAMNIOS, FIRST TRIMESTER, FETUS 5
O4101X9	OLIGOHYDRAMNIOS, FIRST TRIMESTER, OTHER FETUS
O4102X0	OLIGOHYDRAMNIOS, SECOND TRIMESTER, NOT APPLICABLE OR UNSPECIFIED
O4102X1	OLIGOHYDRAMNIOS, SECOND TRIMESTER, FETUS 1
O4102X2	OLIGOHYDRAMNIOS, SECOND TRIMESTER, FETUS 2
O4102X3	OLIGOHYDRAMNIOS, SECOND TRIMESTER, FETUS 3
O4102X4	OLIGOHYDRAMNIOS, SECOND TRIMESTER, FETUS 4
O4102X5	OLIGOHYDRAMNIOS, SECOND TRIMESTER, FETUS 5
O4102X9	OLIGOHYDRAMNIOS, SECOND TRIMESTER, OTHER FETUS
O4103X0	OLIGOHYDRAMNIOS, THIRD TRIMESTER, NOT APPLICABLE OR UNSPECIFIED
O4103X1	OLIGOHYDRAMNIOS, THIRD TRIMESTER, FETUS 1
O4103X2	OLIGOHYDRAMNIOS, THIRD TRIMESTER, FETUS 2
O4103X3	OLIGOHYDRAMNIOS, THIRD TRIMESTER, FETUS 3
O4103X4	OLIGOHYDRAMNIOS, THIRD TRIMESTER, FETUS 4
O4103X5	OLIGOHYDRAMNIOS, THIRD TRIMESTER, FETUS 5
O4103X9	OLIGOHYDRAMNIOS, THIRD TRIMESTER, OTHER FETUS
O4401	PLACENTA PREVIA SPECIFIED AS WITHOUT HEMORRHAGE, FIRST TRIMESTER
O4402	PLACENTA PREVIA SPECIFIED AS WITHOUT HEMORRHAGE, SECOND TRIMESTER
O4403	PLACENTA PREVIA SPECIFIED AS WITHOUT HEMORRHAGE, THIRD TRIMESTER
O4411	PLACENTA PREVIA WITH HEMORRHAGE, FIRST TRIMESTER
O4412	PLACENTA PREVIA WITH HEMORRHAGE, SECOND TRIMESTER
O4413	PLACENTA PREVIA WITH HEMORRHAGE, THIRD TRIMESTER
O45001	PREMATURE SEPARATION OF PLACENTA WITH COAGULATION DEFECT, UNSPECIFIED, FIRST TRIMESTER
O45002	PREMATURE SEPARATION OF PLACENTA WITH COAGULATION DEFECT, UNSPECIFIED, SECOND TRIMESTER
O45003	PREMATURE SEPARATION OF PLACENTA WITH COAGULATION DEFECT, UNSPECIFIED, THIRD TRIMESTER

Step 7 (diagnosis of pregnancy)	
Required diagnosis: 1	
Look back timeframe: 310 days	
ICD-10 Code	Description
O45011	PREMATURE SEPARATION OF PLACENTA WITH AFIBRINOGENEMIA, FIRST TRIMESTER
O45012	PREMATURE SEPARATION OF PLACENTA WITH AFIBRINOGENEMIA, SECOND TRIMESTER
O45013	PREMATURE SEPARATION OF PLACENTA WITH AFIBRINOGENEMIA, THIRD TRIMESTER
O45021	PREMATURE SEPARATION OF PLACENTA WITH DISSEMINATED INTRAVASCULAR COAGULATION, FIRST TRIMESTER
O45022	PREMATURE SEPARATION OF PLACENTA WITH DISSEMINATED INTRAVASCULAR COAGULATION, SECOND TRIMESTER
O45023	PREMATURE SEPARATION OF PLACENTA WITH DISSEMINATED INTRAVASCULAR COAGULATION, THIRD TRIMESTER
O45091	PREMATURE SEPARATION OF PLACENTA WITH OTHER COAGULATION DEFECT, FIRST TRIMESTER
O45092	PREMATURE SEPARATION OF PLACENTA WITH OTHER COAGULATION DEFECT, SECOND TRIMESTER
O45093	PREMATURE SEPARATION OF PLACENTA WITH OTHER COAGULATION DEFECT, THIRD TRIMESTER
O458X1	OTHER PREMATURE SEPARATION OF PLACENTA, FIRST TRIMESTER
O458X2	OTHER PREMATURE SEPARATION OF PLACENTA, SECOND TRIMESTER
O458X3	OTHER PREMATURE SEPARATION OF PLACENTA, THIRD TRIMESTER
O4591	PREMATURE SEPARATION OF PLACENTA, UNSPECIFIED, FIRST TRIMESTER
O4592	PREMATURE SEPARATION OF PLACENTA, UNSPECIFIED, SECOND TRIMESTER
O4593	PREMATURE SEPARATION OF PLACENTA, UNSPECIFIED, THIRD TRIMESTER
O46001	ANTEPARTUM HEMORRHAGE WITH COAGULATION DEFECT, UNSPECIFIED, FIRST TRIMESTER
O46002	ANTEPARTUM HEMORRHAGE WITH COAGULATION DEFECT, UNSPECIFIED, SECOND TRIMESTER
O46003	ANTEPARTUM HEMORRHAGE WITH COAGULATION DEFECT, UNSPECIFIED, THIRD TRIMESTER
O46011	ANTEPARTUM HEMORRHAGE WITH AFIBRINOGENEMIA, FIRST TRIMESTER
O46012	ANTEPARTUM HEMORRHAGE WITH AFIBRINOGENEMIA, SECOND TRIMESTER
O46013	ANTEPARTUM HEMORRHAGE WITH AFIBRINOGENEMIA, THIRD TRIMESTER
O46021	ANTEPARTUM HEMORRHAGE WITH DISSEMINATED INTRAVASCULAR COAGULATION, FIRST TRIMESTER
O46022	ANTEPARTUM HEMORRHAGE WITH DISSEMINATED INTRAVASCULAR COAGULATION, SECOND TRIMESTER

Step 7 (diagnosis of pregnancy)	
Required diagnosis: 1	
Look back timeframe: 310 days	
ICD-10 Code	Description
O46023	ANTEPARTUM HEMORRHAGE WITH DISSEMINATED INTRAVASCULAR COAGULATION, THIRD TRIMESTER
O46091	ANTEPARTUM HEMORRHAGE WITH OTHER COAGULATION DEFECT, FIRST TRIMESTER
O46092	ANTEPARTUM HEMORRHAGE WITH OTHER COAGULATION DEFECT, SECOND TRIMESTER
O46093	ANTEPARTUM HEMORRHAGE WITH OTHER COAGULATION DEFECT, THIRD TRIMESTER
O468X1	OTHER ANTEPARTUM HEMORRHAGE, FIRST TRIMESTER
O468X2	OTHER ANTEPARTUM HEMORRHAGE, SECOND TRIMESTER
O468X3	OTHER ANTEPARTUM HEMORRHAGE, THIRD TRIMESTER
O4691	ANTEPARTUM HEMORRHAGE, UNSPECIFIED, FIRST TRIMESTER
O4692	ANTEPARTUM HEMORRHAGE, UNSPECIFIED, SECOND TRIMESTER
O4693	ANTEPARTUM HEMORRHAGE, UNSPECIFIED, THIRD TRIMESTER
O4700	FALSE LABOR BEFORE 37 COMPLETED WEEKS OF GESTATION, UNSPECIFIED TRIMESTER
O4702	FALSE LABOR BEFORE 37 COMPLETED WEEKS OF GESTATION, SECOND TRIMESTER
O4703	FALSE LABOR BEFORE 37 COMPLETED WEEKS OF GESTATION, THIRD TRIMESTER
O471	FALSE LABOR AT OR AFTER 37 COMPLETED WEEKS OF GESTATION
O479	FALSE LABOR, UNSPECIFIED
O480	POST-TERM PREGNANCY
O481	PROLONGED PREGNANCY
O6000	PRETERM LABOR WITHOUT DELIVERY, UNSPECIFIED TRIMESTER
O6002	PRETERM LABOR WITHOUT DELIVERY, SECOND TRIMESTER
O6003	PRETERM LABOR WITHOUT DELIVERY, THIRD TRIMESTER
O98011	TUBERCULOSIS COMPLICATING PREGNANCY, FIRST TRIMESTER
O98012	TUBERCULOSIS COMPLICATING PREGNANCY, SECOND TRIMESTER
O98013	TUBERCULOSIS COMPLICATING PREGNANCY, THIRD TRIMESTER
O98019	TUBERCULOSIS COMPLICATING PREGNANCY, UNSPECIFIED TRIMESTER
O98111	SYPHILIS COMPLICATING PREGNANCY, FIRST TRIMESTER
O98112	SYPHILIS COMPLICATING PREGNANCY, SECOND TRIMESTER
O98113	SYPHILIS COMPLICATING PREGNANCY, THIRD TRIMESTER
O98119	SYPHILIS COMPLICATING PREGNANCY, UNSPECIFIED TRIMESTER
O98211	GONORRHEA COMPLICATING PREGNANCY, FIRST TRIMESTER
O98212	GONORRHEA COMPLICATING PREGNANCY, SECOND TRIMESTER
O98213	GONORRHEA COMPLICATING PREGNANCY, THIRD TRIMESTER
O98219	GONORRHEA COMPLICATING PREGNANCY, UNSPECIFIED TRIMESTER
O98311	OTHER INFECTIONS WITH A PREDOMINANTLY SEXUAL MODE OF TRANSMISSION COMPLICATING PREGNANCY, FIRST TRIMESTER

Step 7 (diagnosis of pregnancy)	
Required diagnosis: 1	
Look back timeframe: 310 days	
ICD-10 Code	Description
O98312	OTHER INFECTIONS WITH A PREDOMINANTLY SEXUAL MODE OF TRANSMISSION COMPLICATING PREGNANCY, SECOND TRIMESTER
O98313	OTHER INFECTIONS WITH A PREDOMINANTLY SEXUAL MODE OF TRANSMISSION COMPLICATING PREGNANCY, THIRD TRIMESTER
O98319	OTHER INFECTIONS WITH A PREDOMINANTLY SEXUAL MODE OF TRANSMISSION COMPLICATING PREGNANCY, UNSPECIFIED TRIMESTER
O98411	VIRAL HEPATITIS COMPLICATING PREGNANCY, FIRST TRIMESTER
O98412	VIRAL HEPATITIS COMPLICATING PREGNANCY, SECOND TRIMESTER
O98413	VIRAL HEPATITIS COMPLICATING PREGNANCY, THIRD TRIMESTER
O98419	VIRAL HEPATITIS COMPLICATING PREGNANCY, UNSPECIFIED TRIMESTER
O98511	OTHER VIRAL DISEASES COMPLICATING PREGNANCY, FIRST TRIMESTER
O98512	OTHER VIRAL DISEASES COMPLICATING PREGNANCY, SECOND TRIMESTER
O98513	OTHER VIRAL DISEASES COMPLICATING PREGNANCY, THIRD TRIMESTER
O98519	OTHER VIRAL DISEASES COMPLICATING PREGNANCY, UNSPECIFIED TRIMESTER
O98611	PROTOZOAL DISEASES COMPLICATING PREGNANCY, FIRST TRIMESTER
O98612	PROTOZOAL DISEASES COMPLICATING PREGNANCY, SECOND TRIMESTER
O98613	PROTOZOAL DISEASES COMPLICATING PREGNANCY, THIRD TRIMESTER
O98619	PROTOZOAL DISEASES COMPLICATING PREGNANCY, UNSPECIFIED TRIMESTER
O98711	HUMAN IMMUNODEFICIENCY VIRUS [HIV] DISEASE COMPLICATING PREGNANCY, FIRST TRIMESTER
O98712	HUMAN IMMUNODEFICIENCY VIRUS [HIV] DISEASE COMPLICATING PREGNANCY, SECOND TRIMESTER
O98713	HUMAN IMMUNODEFICIENCY VIRUS [HIV] DISEASE COMPLICATING PREGNANCY, THIRD TRIMESTER
O98719	HUMAN IMMUNODEFICIENCY VIRUS [HIV] DISEASE COMPLICATING PREGNANCY, UNSPECIFIED TRIMESTER
O98811	OTHER MATERNAL INFECTIOUS AND PARASITIC DISEASES COMPLICATING PREGNANCY, FIRST TRIMESTER
O98812	OTHER MATERNAL INFECTIOUS AND PARASITIC DISEASES COMPLICATING PREGNANCY, SECOND TRIMESTER
O98813	OTHER MATERNAL INFECTIOUS AND PARASITIC DISEASES COMPLICATING PREGNANCY, THIRD TRIMESTER
O98819	OTHER MATERNAL INFECTIOUS AND PARASITIC DISEASES COMPLICATING PREGNANCY, UNSPECIFIED TRIMESTER
O98911	UNSPECIFIED MATERNAL INFECTIOUS AND PARASITIC DISEASE COMPLICATING PREGNANCY, FIRST TRIMESTER
O98912	UNSPECIFIED MATERNAL INFECTIOUS AND PARASITIC DISEASE COMPLICATING PREGNANCY, SECOND TRIMESTER

Step 7 (diagnosis of pregnancy)	
Required diagnosis: 1	
Look back timeframe: 310 days	
ICD-10 Code	Description
O98913	UNSPECIFIED MATERNAL INFECTIOUS AND PARASITIC DISEASE COMPLICATING PREGNANCY, THIRD TRIMESTER
O98919	UNSPECIFIED MATERNAL INFECTIOUS AND PARASITIC DISEASE COMPLICATING PREGNANCY, UNSPECIFIED TRIMESTER
O99011	ANEMIA COMPLICATING PREGNANCY, FIRST TRIMESTER
O99012	ANEMIA COMPLICATING PREGNANCY, SECOND TRIMESTER
O99013	ANEMIA COMPLICATING PREGNANCY, THIRD TRIMESTER
O99019	ANEMIA COMPLICATING PREGNANCY, UNSPECIFIED TRIMESTER
O99111	OTHER DISEASES OF THE BLOOD AND BLOOD-FORMING ORGANS AND CERTAIN DISORDERS INVOLVING THE IMMUNE MECHANISM COMPLICATING PREGNANCY, FIRST TRIMESTER
O99112	OTHER DISEASES OF THE BLOOD AND BLOOD-FORMING ORGANS AND CERTAIN DISORDERS INVOLVING THE IMMUNE MECHANISM COMPLICATING PREGNANCY, SECOND TRIMESTER
O99113	OTHER DISEASES OF THE BLOOD AND BLOOD-FORMING ORGANS AND CERTAIN DISORDERS INVOLVING THE IMMUNE MECHANISM COMPLICATING PREGNANCY, THIRD TRIMESTER
O99119	OTHER DISEASES OF THE BLOOD AND BLOOD-FORMING ORGANS AND CERTAIN DISORDERS INVOLVING THE IMMUNE MECHANISM COMPLICATING PREGNANCY, UNSPECIFIED TRIMESTER
O99210	OBESITY COMPLICATING PREGNANCY, UNSPECIFIED TRIMESTER
O99211	OBESITY COMPLICATING PREGNANCY, FIRST TRIMESTER
O99212	OBESITY COMPLICATING PREGNANCY, SECOND TRIMESTER
O99213	OBESITY COMPLICATING PREGNANCY, THIRD TRIMESTER
O99280	ENDOCRINE, NUTRITIONAL AND METABOLIC DISEASES COMPLICATING PREGNANCY, UNSPECIFIED TRIMESTER
O99281	ENDOCRINE, NUTRITIONAL AND METABOLIC DISEASES COMPLICATING PREGNANCY, FIRST TRIMESTER
O99282	ENDOCRINE, NUTRITIONAL AND METABOLIC DISEASES COMPLICATING PREGNANCY, SECOND TRIMESTER
O99283	ENDOCRINE, NUTRITIONAL AND METABOLIC DISEASES COMPLICATING PREGNANCY, THIRD TRIMESTER
O99310	ALCOHOL USE COMPLICATING PREGNANCY, UNSPECIFIED TRIMESTER
O99311	ALCOHOL USE COMPLICATING PREGNANCY, FIRST TRIMESTER
O99312	ALCOHOL USE COMPLICATING PREGNANCY, SECOND TRIMESTER
O99313	ALCOHOL USE COMPLICATING PREGNANCY, THIRD TRIMESTER
O99320	DRUG USE COMPLICATING PREGNANCY, UNSPECIFIED TRIMESTER
O99321	DRUG USE COMPLICATING PREGNANCY, FIRST TRIMESTER
O99322	DRUG USE COMPLICATING PREGNANCY, SECOND TRIMESTER
O99323	DRUG USE COMPLICATING PREGNANCY, THIRD TRIMESTER
O99330	SMOKING (TOBACCO) COMPLICATING PREGNANCY, UNSPECIFIED TRIMESTER
O99331	SMOKING (TOBACCO) COMPLICATING PREGNANCY, FIRST TRIMESTER

Step 7 (diagnosis of pregnancy)	
Required diagnosis: 1	
Look back timeframe: 310 days	
ICD-10 Code	Description
O99332	SMOKING (TOBACCO) COMPLICATING PREGNANCY, SECOND TRIMESTER
O99333	SMOKING (TOBACCO) COMPLICATING PREGNANCY, THIRD TRIMESTER
O99340	OTHER MENTAL DISORDERS COMPLICATING PREGNANCY, UNSPECIFIED TRIMESTER
O99341	OTHER MENTAL DISORDERS COMPLICATING PREGNANCY, FIRST TRIMESTER
O99342	OTHER MENTAL DISORDERS COMPLICATING PREGNANCY, SECOND TRIMESTER
O99343	OTHER MENTAL DISORDERS COMPLICATING PREGNANCY, THIRD TRIMESTER
O99350	DISEASES OF THE NERVOUS SYSTEM COMPLICATING PREGNANCY, UNSPECIFIED TRIMESTER
O99351	DISEASES OF THE NERVOUS SYSTEM COMPLICATING PREGNANCY, FIRST TRIMESTER
O99352	DISEASES OF THE NERVOUS SYSTEM COMPLICATING PREGNANCY, SECOND TRIMESTER
O99353	DISEASES OF THE NERVOUS SYSTEM COMPLICATING PREGNANCY, THIRD TRIMESTER
O99511	DISEASES OF THE RESPIRATORY SYSTEM COMPLICATING PREGNANCY, FIRST TRIMESTER
O99512	DISEASES OF THE RESPIRATORY SYSTEM COMPLICATING PREGNANCY, SECOND TRIMESTER
O99513	DISEASES OF THE RESPIRATORY SYSTEM COMPLICATING PREGNANCY, THIRD TRIMESTER
O99519	DISEASES OF THE RESPIRATORY SYSTEM COMPLICATING PREGNANCY, UNSPECIFIED TRIMESTER
O99611	DISEASES OF THE DIGESTIVE SYSTEM COMPLICATING PREGNANCY, FIRST TRIMESTER
O99612	DISEASES OF THE DIGESTIVE SYSTEM COMPLICATING PREGNANCY, SECOND TRIMESTER
O99613	DISEASES OF THE DIGESTIVE SYSTEM COMPLICATING PREGNANCY, THIRD TRIMESTER
O99619	DISEASES OF THE DIGESTIVE SYSTEM COMPLICATING PREGNANCY, UNSPECIFIED TRIMESTER
O99711	DISEASES OF THE SKIN AND SUBCUTANEOUS TISSUE COMPLICATING PREGNANCY, FIRST TRIMESTER
O99712	DISEASES OF THE SKIN AND SUBCUTANEOUS TISSUE COMPLICATING PREGNANCY, SECOND TRIMESTER
O99713	DISEASES OF THE SKIN AND SUBCUTANEOUS TISSUE COMPLICATING PREGNANCY, THIRD TRIMESTER
O99719	DISEASES OF THE SKIN AND SUBCUTANEOUS TISSUE COMPLICATING PREGNANCY, UNSPECIFIED TRIMESTER
O99810	ABNORMAL GLUCOSE COMPLICATING PREGNANCY
O99820	STREPTOCOCCUS B CARRIER STATE COMPLICATING PREGNANCY

Step 7 (diagnosis of pregnancy)	
Required diagnosis: 1	
Look back timeframe: 310 days	
ICD-10 Code	Description
O99830	OTHER INFECTION CARRIER STATE COMPLICATING PREGNANCY
O99840	BARIATRIC SURGERY STATUS COMPLICATING PREGNANCY, UNSPECIFIED TRIMESTER
O99841	BARIATRIC SURGERY STATUS COMPLICATING PREGNANCY, FIRST TRIMESTER
O99842	BARIATRIC SURGERY STATUS COMPLICATING PREGNANCY, SECOND TRIMESTER
O99843	BARIATRIC SURGERY STATUS COMPLICATING PREGNANCY, THIRD TRIMESTER
O9989	OTHER SPECIFIED DISEASES AND CONDITIONS COMPLICATING PREGNANCY, CHILDBIRTH AND THE PUERPERIUM
O9A111	MALIGNANT NEOPLASM COMPLICATING PREGNANCY, FIRST TRIMESTER
O9A112	MALIGNANT NEOPLASM COMPLICATING PREGNANCY, SECOND TRIMESTER
O9A113	MALIGNANT NEOPLASM COMPLICATING PREGNANCY, THIRD TRIMESTER
O9A119	MALIGNANT NEOPLASM COMPLICATING PREGNANCY, UNSPECIFIED TRIMESTER
O9A211	INJURY, POISONING AND CERTAIN OTHER CONSEQUENCES OF EXTERNAL CAUSES COMPLICATING PREGNANCY, FIRST TRIMESTER
O9A212	INJURY, POISONING AND CERTAIN OTHER CONSEQUENCES OF EXTERNAL CAUSES COMPLICATING PREGNANCY, SECOND TRIMESTER
O9A213	INJURY, POISONING AND CERTAIN OTHER CONSEQUENCES OF EXTERNAL CAUSES COMPLICATING PREGNANCY, THIRD TRIMESTER
O9A219	INJURY, POISONING AND CERTAIN OTHER CONSEQUENCES OF EXTERNAL CAUSES COMPLICATING PREGNANCY, UNSPECIFIED TRIMESTER
O9A311	PHYSICAL ABUSE COMPLICATING PREGNANCY, FIRST TRIMESTER
O9A312	PHYSICAL ABUSE COMPLICATING PREGNANCY, SECOND TRIMESTER
O9A313	PHYSICAL ABUSE COMPLICATING PREGNANCY, THIRD TRIMESTER
O9A319	PHYSICAL ABUSE COMPLICATING PREGNANCY, UNSPECIFIED TRIMESTER
O9A411	SEXUAL ABUSE COMPLICATING PREGNANCY, FIRST TRIMESTER
O9A412	SEXUAL ABUSE COMPLICATING PREGNANCY, SECOND TRIMESTER
O9A413	SEXUAL ABUSE COMPLICATING PREGNANCY, THIRD TRIMESTER
O9A419	SEXUAL ABUSE COMPLICATING PREGNANCY, UNSPECIFIED TRIMESTER
O9A511	PSYCHOLOGICAL ABUSE COMPLICATING PREGNANCY, FIRST TRIMESTER
O9A512	PSYCHOLOGICAL ABUSE COMPLICATING PREGNANCY, SECOND TRIMESTER
O9A513	PSYCHOLOGICAL ABUSE COMPLICATING PREGNANCY, THIRD TRIMESTER
O9A519	PSYCHOLOGICAL ABUSE COMPLICATING PREGNANCY, UNSPECIFIED TRIMESTER

Step 8 (negating diagnosis for pregnancy)	
Required diagnosis: 1	
Look back timeframe: 310 days	
ICD-10 Codes	Description
10-O00	ECTOPIC PREGNANCY
10-O000	ABDOMINAL PREGNANCY
10-O001	TUBAL PREGNANCY
10-O002	OVARIAN PREGNANCY
10-O008	OTHER ECTOPIC PREGNANCY
10-O009	ECTOPIC PREGNANCY, UNSPECIFIED
10-O01	HYDATIDIFORM MOLE
10-O010	CLASSICAL HYDATIDIFORM MOLE
10-O011	INCOMPLETE AND PARTIAL HYDATIDIFORM MOLE
10-O019	HYDATIDIFORM MOLE, UNSPECIFIED
10-O02	OTHER ABNORMAL PRODUCTS OF CONCEPTION
10-O020	BLIGHTED OVUM AND NONHYDATIDIFORM MOLE
10-O021	MISSED ABORTION
10-O028	OTHER SPECIFIED ABNORMAL PRODUCTS OF CONCEPTION
10-O0281	INAPPROP CHG QUANTITAV HCG IN EARLY PREGNANCY
10-O0289	OTHER ABNORMAL PRODUCTS OF CONCEPTION
10-O029	ABNORMAL PRODUCT OF CONCEPTION, UNSPECIFIED
10-O03	SPONTANEOUS ABORTION
10-O030	GENITL TRCT AND PELV INFC FOL INCMPL SPON ABORT
10-O031	DELAYED OR EXCESS HEMOR FOL INCMPL SPON ABORTION
10-O032	EMBOLISM FOLLOWING INCOMPLETE SPN ABORTION
10-O033	OTH AND UNSP COMP FOL INCOMPLETE SPN ABORTION
10-O0330	UNSP COMPL FOLLOWING INCOMPLETE SPN ABORTION
10-O0331	SHOCK FOLLOWING INCOMPLETE SPONTANEOUS ABORTION
10-O0332	RENAL FAILURE FOLLOWING INCOMPLETE SPN ABORTION
10-O0333	METABOLIC DISORDER FOL INCOMPLETE SPN ABORTION
10-O0334	DAMAG TO PELVIC ORGANS FOL INCOMPLETE SPON ABORT
10-O0335	OTH VENOUS COMP FOL INCOMPLETE SPN ABORTION
10-O0336	CARDIAC ARREST FOLLOWING INCOMPLETE SPN ABORTION
10-O0337	SEPSIS FOLLOWING INCOMPLETE SPONTANEOUS ABORTION
10-O0338	URINARY TRACT INFC FOL INCOMPLETE SPON ABORTION
10-O0339	INCOMPLETE SPONTANEOUS ABORTION WITH OTHER COMP
10-O034	INCOMPLETE SPONTANEOUS ABORTION WITHOUT COMPL
10-O035	GENITL TRCT&PELV INF FOL COM OR UNSP SPON ABORT
10-O036	DLY OR EXCESS HEMOR FOL COM OR UNSP SPON ABORT
10-O037	EMBOLISM FOLLOWING COMPLETE OR UNSP SPN ABORTION

Step 8 (negating diagnosis for pregnancy)	
Required diagnosis: 1	
Look back timeframe: 310 days	
ICD-10 Codes	Description
10-O038	OTH AND UNSP COMP FOL COM OR UNSP SPON ABORT
10-O0380	UNSP COMP FOL COMPLETE OR UNSP SPN ABORTION
10-O0381	SHOCK FOLLOWING COMPLETE OR USP SPN ABORTION
10-O0382	RENAL FAILURE FOL COMPLETE OR UNSP SPON ABORTION
10-O0383	METAB DISORDER FOL COMPLETE OR UNSP SPON ABORT
10-O0384	DAMAG TO PELVIC ORG FOL COM OR UNSP SPON ABORT
10-O0385	OTH VENOUS COMP FOL COMPLETE OR UNSP SPON ABORT
10-O0386	CARDIAC ARREST FOL COMPLETE OR UNSP SPON ABORT
10-O0387	SEPSIS FOLLOWING COMPLETE OR UNSP SPN ABORTION
10-O0388	URINARY TRACT INFC FOL COM OR UNSP SPON ABORT
10-O0389	COMPLETE OR UNSP SPN ABORTION WITH OTH COMP
10-O039	COMPLETE OR UNSP SPN ABORTION WITHOUT COMPL
10-O04	COMPLICATIONS FOLLOWING TERMINATION OF PREGNANCY
10-O045	GENITL TRCT AND PELVIC INFCT FOL TERM OF PRG
10-O046	DELAYED OR EXCESS HEMOR FOL TERM OF PREGNANCY
10-O047	EMBOLISM FOLLOWING TERMINATION OF PREGNANCY
10-O048	TERMINATION OF PREGNANCY W OTH AND UNSP COMP
10-O0480	TERMINATION OF PREGNANCY WITH UNSP COMPLICATIONS
10-O0481	SHOCK FOLLOWING TERMINATION OF PREGNANCY
10-O0482	RENAL FAILURE FOLLOWING TERMINATION OF PREGNANCY
10-O0483	METABOLIC DISORDER FOLLOWING TERM OF PREGNANCY
10-O0484	DAMAGE TO PELVIC ORGANS FOL TERM OF PREGNANCY
10-O0485	OTH VENOUS COMP FOLLOWING TERM OF PREGNANCY
10-O0486	CARDIAC ARREST FOLLOWING TERM OF PREGNANCY
10-O0487	SEPSIS FOLLOWING TERMINATION OF PREGNANCY
10-O0488	URINARY TRACT INFECTION FOL TERM OF PREGNANCY
10-O0489	TERMINATION OF PREGNANCY WITH OTHER COMP
10-O07	FAILED ATTEMPTED TERMINATION OF PREGNANCY
10-O070	GENITL TRCT&PELV INF FOL FAIL ATTEMPT TRM OF PRG
10-O071	DLY OR EXCESS HEMOR FOL FAIL ATTEMPT TERM OF PRG
10-O072	EMBOLISM FOL FAILED ATTEMPT TERM OF PREGNANCY
10-O073	FAILED ATTEMPT TERM OF PRG W OTH AND UNSP COMP
10-O0730	FAILED ATTEMPTED TERM OF PREGNANCY W UNSP COMP
10-O0731	SHOCK FOLLOWING FAILED ATTEMPT TERM OF PREGNANCY
10-O0732	RENAL FAILURE FOL FAILED ATTEMPT TERM OF PRG
10-O0733	METAB DISORDER FOL FAILED ATTEMPT TERM OF PRG
10-O0734	DAMAG TO PELVIC ORG FOL FAIL ATTEMPT TERM OF PRG
10-O0735	OTH VENOUS COMP FOL FAILED ATTEMPT TERM OF PRG

Step 8 (negating diagnosis for pregnancy)	
Required diagnosis: 1	
Look back timeframe: 310 days	
ICD-10 Codes	Description
10-O0736	CARDIAC ARREST FOL FAILED ATTEMPT TERM OF PRG
10-O0737	SEPSIS FOL FAILED ATTEMPT TERM OF PREGNANCY
10-O0738	URINRY TRACT INFC FOL FAILED ATTEMPT TERM OF PRG
10-O0739	FAILED ATTEMPTED TERM OF PREGNANCY W OTH COMP
10-O074	FAILED ATTEMPTED TERM OF PREGNANCY W/O COMPL
10-O08	COMP FOLLOWING ECTOPIC AND MOLAR PREGNANCY
10-O080	GENITL TRCT AND PELV INFC FOL ECT AND MOLAR PRG
10-O081	DLY OR EXCESS HEMOR FOL ECTOPIC AND MOLAR PRG
10-O082	EMBOLISM FOLLOWING ECTOPIC AND MOLAR PREGNANCY
10-O083	SHOCK FOLLOWING ECTOPIC AND MOLAR PREGNANCY
10-O084	RENAL FAILURE FOL ECTOPIC AND MOLAR PREGNANCY
10-O085	METAB DISORD FOL AN ECTOPIC AND MOLAR PREGNANCY
10-O086	DAMAG TO PELV ORG & TISS FOL AN ECT & MOLAR PREG
10-O087	OTH VENOUS COMP FOL AN ECTOPIC AND MOLAR PRG
10-O088	OTHER COMP FOL AN ECTOPIC AND MOLAR PREGNANCY
10-O0881	CARDIAC ARREST FOL AN ECTOPIC AND MOLAR PRG
10-O0882	SEPSIS FOLLOWING ECTOPIC AND MOLAR PREGNANCY
10-O0883	URINARY TRACT INFC FOL AN ECTOPIC AND MOLAR PRG
10-O0889	OTHER COMP FOL AN ECTOPIC AND MOLAR PREGNANCY
10-O089	UNSP COMPL FOL AN ECTOPIC AND MOLAR PREGNANCY
10-O1002	PRE-EXIST ESSENTIAL HYPERTENSION COMP CHLDBRTH
10-O1003	PRE-EXIST ESSENTIAL HYPERTENSION COMP THE PUERP
10-O1012	PRE-EXISTING HYP HEART DISEASE COMP CHILDBIRTH
10-O1013	PRE-EXISTING HYP HEART DISEASE COMP THE PUERP
10-O1022	PRE-EXIST HYP CHR KIDNEY DISEASE COMP CHLDBRTH
10-O1023	PRE-EXIST HYP CHR KIDNEY DISEASE COMP THE PUERP
10-O1032	PRE-EXIST HYP HEART&CHR KIDNEY DIS COMP CHLDBRTH
10-O1033	PRE-EXIST HYP HEART&CHR KDN DIS COMP THE PUERP
10-O1042	PRE-EXISTING SEC HYPERTENSION COMP CHLDBRTH
10-O1043	PRE-EXISTING SEC HYPERTENSION COMP THE PUERP
10-O1092	UNSP PRE-EXISTING HYPERTENSION COMP CHILDBIRTH
10-O1093	UNSP PRE-EXISTING HYPERTENSION COMP THE PUERP
10-O151	ECLAMPSIA IN LABOR
10-O152	ECLAMPSIA IN THE PUERPERIUM
10-O2402	PRE-EXISTING DIAB MEL TYPE 1 IN CHILDBIRTH
10-O2403	PRE-EXISTING DIAB MEL TYPE 1 IN THE PUERPERIUM
10-O2412	PRE-EXISTING DIAB MEL TYPE 2 IN CHILDBIRTH
10-O2413	PRE-EXISTING DIAB MEL TYPE 2 IN THE PUERPERIUM

Step 8 (negating diagnosis for pregnancy)	
Required diagnosis: 1	
Look back timeframe: 310 days	
ICD-10 Codes	Description
10-O2432	UNSPECIFIED PRE-EXISTING DIAB MEL IN CHILDBIRTH
10-O2433	USP PRE-EXISTING DIAB MEL IN THE PUERPERIUM
10-O2482	OTHER PRE-EXISTING DIAB MEL IN CHILDBIRTH
10-O2483	OTHER PRE-EXISTING DIAB MEL IN THE PUERPERIUM
10-O2492	UNSPECIFIED DIABETES MELLITUS IN CHILDBIRTH
10-O2493	UNSPECIFIED DIABETES MELLITUS IN THE PUERPERIUM
10-O252	MALNUTRITION IN CHILDBIRTH
10-O253	MALNUTRITION IN THE PUERPERIUM
10-O2662	LIVER AND BILIARY TRACT DISORDERS IN CHILDBIRTH
10-O2663	LIVER AND BILIARY TRACT DISORDERS IN THE PUERP
10-O2672	SUBLUXATION OF SYMPHYSIS (PUBIS) IN CHILDBIRTH
10-O2673	SUBLUXATION OF SYMPHYSIS IN THE PUERPERIUM
10-O420	PREM ROM ONSET OF LABOR WITHIN 24 HOURS OF RUP
10-O4200	PREM ROM ONST LAB W/N 24 HR RUP USP WK GEST
10-O4201	PRETERM PREM ROM ONSET LABOR WITHIN 24 HR OF RUP
10-O42011	PRETRM PREM ROM ONST LAB W/N 24 HR RUP 1ST TRI
10-O42012	PRETRM PREM ROM ONST LAB W/N 24 HR RUP 2ND TRI
10-O42013	PRETRM PREM ROM ONST LAB W/N 24 HR RUP 3RD TRI
10-O42019	PRETRM PREM ROM ONST LAB W/N 24 HR RUP USP TRI
10-O4202	FULL-TERM PREM ROM ONSET LAB WITHIN 24 HR OF RUP
10-O421	PREMATURE ROM ONSET LABOR > 24 HOURS FOL RUPTURE
10-O4210	PREM ROM ONST LAB>24 HR FOL RUPT UNSP WK OF GEST
10-O4211	PRETERM PREM ROM ONSET LABOR>24 HOURS FOL RUP
10-O42111	PRETRM PREM ROM ONSET LAB>24 HR FOL RUPT 1ST TRI
10-O42112	PRETRM PREM ROM ONSET LAB>24 HR FOL RUPT 2ND TRI
10-O42113	PRETRM PREM ROM ONST LAB>24 HR FOL RUPT 3RD TRI
10-O42119	PRETRM PREM ROM ONST LAB>24 HR FOL RUPT UNSP TRI
10-O4212	FULL-TERM PREM ROM ONSET LABOR>24 HOURS FOL RUP
10-O429	PREM ROM UNSP TIME BETW RUP AND ONSET OF LABOR
10-O4290	PREM ROM 7TH0 BETW RUPT&ONST LABR USP WK OF GEST
10-O4291	PRETERM PREM ROM UNSP TIME BETW RUP AND ONST LAB
10-O42911	PRETRM PREM ROM USP TIME BT RUP&ONST LAB 1ST TRI
10-O42912	PRETRM PREM ROM USP TIME BT RUP&ONST LAB 2ND TRI
10-O42913	PRETRM PREM ROM USP TIME BT RUP&ONST LAB 3RD TRI
10-O42919	PRETRM PREM ROM USP TIME BT RUP&ONST LAB USP TRI
10-O4292	FULL-TRM PREM ROM UNSP TIME BETW RUP & ONST LAB
10-O60	PRETERM LABOR
10-O600	PRETERM LABOR WITHOUT DELIVERY

Step 8 (negating diagnosis for pregnancy)	
Required diagnosis: 1	
Look back timeframe: 310 days	
ICD-10 Codes	Description
10-O6000	PRETERM LABOR WITHOUT DELIVERY USP TRIMESTER
10-O6002	PRETERM LABOR WITHOUT DELIVERY, SECOND TRIMESTER
10-O6003	PRETERM LABOR WITHOUT DELIVERY, THIRD TRIMESTER
10-O601	PRETERM LABOR WITH PRETERM DELIVERY
10-O6010	PRETERM LABOR WITH PRETERM DELIVERY USP TRI
10-O6010X0	PRETERM LABOR W PRETERM DELIVERY UNSP TRI UNSP
10-O6010X1	PRETERM LABOR WITH PRETERM DEL UNSP TRI FETUS 1
10-O6010X2	PRETERM LABOR WITH PRETERM DEL UNSP TRI FETUS 2
10-O6010X3	PRETERM LABOR WITH PRETERM DEL UNSP TRI FETUS 3
10-O6010X4	PRETERM LABOR WITH PRETERM DEL UNSP TRI FETUS 4
10-O6010X5	PRETERM LABOR WITH PRETERM DEL UNSP TRI FETUS 5
10-O6010X9	PRETERM LABOR W PRETERM DEL UNSP TRI OTH FETUS
10-O6012	PRETERM LABOR 2ND TRI W PRETERM DEL 2ND TRI
10-O6012X0	PRETERM LABOR 2ND TRI W PRETERM DEL 2ND TRI UNSP
10-O6012X1	PRETERM LABOR 2ND TRI W PRETERM DEL 2ND TRI FTS1
10-O6012X2	PRETERM LABOR 2ND TRI W PRETERM DEL 2ND TRI FTS2
10-O6012X3	PRETERM LABOR 2ND TRI W PRETERM DEL 2ND TRI FTS3
10-O6012X4	PRETERM LABOR 2ND TRI W PRETERM DEL 2ND TRI FTS4
10-O6012X5	PRETERM LAB 2ND TRI W PRETERM DEL 2ND TRI FTS 5
10-O6012X9	PRETERM LABOR 2ND TRI W PRETERM DEL 2ND TRI OTH
10-O6013	PRETERM LABOR SECOND TRI W PRETERM DEL THIRD TRI
10-O6013X0	PRETERM LAB 2ND TRI W PRETERM DEL THIRD TRI UNSP
10-O6013X1	PRETERM LAB 2ND TRI W PRETERM DEL THIRD TRI FTS1
10-O6013X2	PRETERM LAB 2ND TRI W PRETERM DEL THIRD TRI FTS2
10-O6013X3	PRETERM LAB 2ND TRI W PRETERM DEL THIRD TRI FTS3
10-O6013X4	PRETERM LAB 2ND TRI W PRETERM DEL THIRD TRI FTS4
10-O6013X5	PRETERM LAB 2ND TRI W PRETERM DEL 3RD TRI FTS 5
10-O6013X9	PRETERM LAB 2ND TRI W PRETERM DEL THIRD TRI OTH
10-O6014	PRETERM LABOR THIRD TRI W PRETERM DEL THIRD TRI
10-O6014X0	PRETERM LAB 3RD TRI W PRETERM DEL 3RD TRI UNSP
10-O6014X1	PRETERM LAB 3RD TRI W PRETERM DEL 3RD TRI FTS1
10-O6014X2	PRETERM LAB 3RD TRI W PRETERM DEL 3RD TRI FTS2
10-O6014X3	PRETERM LAB 3RD TRI W PRETERM DEL 3RD TRI FTS3
10-O6014X4	PRETERM LAB 3RD TRI W PRETERM DEL 3RD TRI FTS4
10-O6014X5	PRETERM LAB 3RD TRI W PRETERM DEL 3RD TRI FTS 5
10-O6014X9	PRETERM LAB 3RD TRI W PRETERM DEL 3RD TRI OTH
10-O602	TERM DELIVERY WITH PRETERM LABOR
10-O6020	TERM DELIVERY WITH PRETERM LABOR USP TRIMESTER

Step 8 (negating diagnosis for pregnancy)	
Required diagnosis: 1	
Look back timeframe: 310 days	
ICD-10 Codes	Description
10-O6020X0	TERM DELIVERY W PRETERM LABOR UNSP TRI UNSP
10-O6020X1	TERM DEL WITH PRETERM LABOR UNSP TRI FETUS 1
10-O6020X2	TERM DEL WITH PRETERM LABOR UNSP TRI FETUS 2
10-O6020X3	TERM DEL WITH PRETERM LABOR UNSP TRI FETUS 3
10-O6020X4	TERM DEL WITH PRETERM LABOR UNSP TRI FETUS 4
10-O6020X5	TERM DEL WITH PRETERM LABOR UNSP TRI FETUS 5
10-O6020X9	TERM DEL WITH PRETERM LABOR UNSP TRI OTH FETUS
10-O6022	TERM DELIVERY WITH PRETERM LABOR SECOND TRI
10-O6022X0	TERM DELIVERY W PRETERM LABOR SECOND TRI UNSP
10-O6022X1	TERM DEL WITH PRETERM LABOR SECOND TRI FETUS 1
10-O6022X2	TERM DEL WITH PRETERM LABOR SECOND TRI FETUS 2
10-O6022X3	TERM DEL WITH PRETERM LABOR SECOND TRI FETUS 3
10-O6022X4	TERM DEL WITH PRETERM LABOR SECOND TRI FETUS 4
10-O6022X5	TERM DEL WITH PRETERM LABOR SECOND TRI FETUS 5
10-O6022X9	TERM DEL W PRETERM LABOR SECOND TRI OTH FETUS
10-O6023	TERM DELIVERY WITH PRETERM LABOR THIRD TRIMESTER
10-O6023X0	TERM DELIVERY W PRETERM LABOR THIRD TRI UNSP
10-O6023X1	TERM DEL WITH PRETERM LABOR THIRD TRI FETUS 1
10-O6023X2	TERM DEL WITH PRETERM LABOR THIRD TRI FETUS 2
10-O6023X3	TERM DEL WITH PRETERM LABOR THIRD TRI FETUS 3
10-O6023X4	TERM DEL WITH PRETERM LABOR THIRD TRI FETUS 4
10-O6023X5	TERM DEL WITH PRETERM LABOR THIRD TRI FETUS 5
10-O6023X9	TERM DEL WITH PRETERM LABOR THIRD TRI OTH FETUS
10-O61	FAILED INDUCTION OF LABOR
10-O610	FAILED MEDICAL INDUCTION OF LABOR
10-O611	FAILED INSTRUMENTAL INDUCTION OF LABOR
10-O618	OTHER FAILED INDUCTION OF LABOR
10-O619	FAILED INDUCTION OF LABOR, UNSPECIFIED
10-O62	ABNORMALITIES OF FORCES OF LABOR
10-O620	PRIMARY INADEQUATE CONTRACTIONS
10-O621	SECONDARY UTERINE INERTIA
10-O622	OTHER UTERINE INERTIA
10-O623	PRECIPITATE LABOR
10-O624	HYPERTONIC INCOORDINATE&PROLNG UTERINE CONTRACT
10-O628	OTHER ABNORMALITIES OF FORCES OF LABOR
10-O629	ABNORMALITY OF FORCES OF LABOR, UNSPECIFIED
10-O63	LONG LABOR
10-O630	PROLONGED FIRST STAGE (OF LABOR)

Step 8 (negating diagnosis for pregnancy)	
Required diagnosis: 1	
Look back timeframe: 310 days	
ICD-10 Codes	Description
10-O631	PROLONGED SECOND STAGE (OF LABOR)
10-O632	DELAYED DELIVERY OF SECOND TWIN, TRIPLET, ETC.
10-O639	LONG LABOR, UNSPECIFIED
10-O64	OBST LABOR DUE TO MALPOS AND MALPRESENT OF FETUS
10-O640	OBST LABOR D/T INCOMPLETE ROTATION OF FETAL HEAD
10-O640XX0	OBST LABOR D/T INCMPL ROTATION OF FTL HEAD UNSP
10-O640XX1	OBST LABOR D/T INCMPL ROTATION OF FTL HEAD FTS 1
10-O640XX2	OBST LABOR D/T INCMPL ROTATION OF FTL HEAD FTS 2
10-O640XX3	OBST LABOR D/T INCMPL ROTATION OF FTL HEAD FTS 3
10-O640XX4	OBST LABOR D/T INCMPL ROTATION OF FTL HEAD FTS 4
10-O640XX5	OBST LABOR D/T INCMPL ROTATION OF FTL HEAD FTS 5
10-O640XX9	OBST LABOR D/T INCMPL ROTATION OF FETAL HEAD OTH
10-O641	OBSTRUCTED LABOR DUE TO BREECH PRESENTATION
10-O641XX0	OBSTRUCTED LABOR DUE TO BREECH PRESENTATION UNSP
10-O641XX1	OBST LABOR DUE TO BREECH PRESENTATION FETUS 1
10-O641XX2	OBST LABOR DUE TO BREECH PRESENTATION FETUS 2
10-O641XX3	OBST LABOR DUE TO BREECH PRESENTATION FETUS 3
10-O641XX4	OBST LABOR DUE TO BREECH PRESENTATION FETUS 4
10-O641XX5	OBST LABOR DUE TO BREECH PRESENTATION FETUS 5
10-O641XX9	OBST LABOR D/T BREECH PRESENTATION OTHER FETUS
10-O642	OBSTRUCTED LABOR DUE TO FACE PRESENTATION
10-O642XX0	OBSTRUCTED LABOR DUE TO FACE PRESENTATION, UNSP
10-O642XX1	OBST LABOR DUE TO FACE PRESENTATION FETUS 1
10-O642XX2	OBST LABOR DUE TO FACE PRESENTATION FETUS 2
10-O642XX3	OBST LABOR DUE TO FACE PRESENTATION FETUS 3
10-O642XX4	OBST LABOR DUE TO FACE PRESENTATION FETUS 4
10-O642XX5	OBST LABOR DUE TO FACE PRESENTATION FETUS 5
10-O642XX9	OBST LABOR DUE TO FACE PRESENTATION OTHER FETUS
10-O643	OBSTRUCTED LABOR DUE TO BROW PRESENTATION
10-O643XX0	OBSTRUCTED LABOR DUE TO BROW PRESENTATION, UNSP
10-O643XX1	OBST LABOR DUE TO BROW PRESENTATION FETUS 1
10-O643XX2	OBST LABOR DUE TO BROW PRESENTATION FETUS 2
10-O643XX3	OBST LABOR DUE TO BROW PRESENTATION FETUS 3
10-O643XX4	OBST LABOR DUE TO BROW PRESENTATION FETUS 4
10-O643XX5	OBST LABOR DUE TO BROW PRESENTATION FETUS 5
10-O643XX9	OBST LABOR DUE TO BROW PRESENTATION OTHER FETUS
10-O644	OBSTRUCTED LABOR DUE TO SHOULDER PRESENTATION
10-O644XX0	OBST LABOR DUE TO SHOULDER PRESENTATION UNSP

Step 8 (negating diagnosis for pregnancy)	
Required diagnosis: 1	
Look back timeframe: 310 days	
ICD-10 Codes	Description
10-O644XX1	OBST LABOR DUE TO SHOULDER PRESENTATION FETUS 1
10-O644XX2	OBST LABOR DUE TO SHOULDER PRESENTATION FETUS 2
10-O644XX3	OBST LABOR DUE TO SHOULDER PRESENTATION FETUS 3
10-O644XX4	OBST LABOR DUE TO SHOULDER PRESENTATION FETUS 4
10-O644XX5	OBST LABOR DUE TO SHOULDER PRESENTATION FETUS 5
10-O644XX9	OBST LABOR DUE TO SHLD PRESENTATION OTHER FETUS
10-O645	OBSTRUCTED LABOR DUE TO COMPOUND PRESENTATION
10-O645XX0	OBST LABOR DUE TO COMPOUND PRESENTATION UNSP
10-O645XX1	OBST LABOR DUE TO COMPOUND PRESENTATION FETUS 1
10-O645XX2	OBST LABOR DUE TO COMPOUND PRESENTATION FETUS 2
10-O645XX3	OBST LABOR DUE TO COMPOUND PRESENTATION FETUS 3
10-O645XX4	OBST LABOR DUE TO COMPOUND PRESENTATION FETUS 4
10-O645XX5	OBST LABOR DUE TO COMPOUND PRESENTATION FETUS 5
10-O645XX9	OBST LABOR D/T COMPOUND PRESENTATION OTHER FETUS
10-O648	OBST LABOR DUE TO OTH MALPOS AND MALPRESENT
10-O648XX0	OBST LABOR DUE TO OTH MALPOS AND MALPRESENT UNSP
10-O648XX1	OBST LABOR D/T OTH MALPOS AND MALPRESENT FETUS 1
10-O648XX2	OBST LABOR D/T OTH MALPOS AND MALPRESENT FETUS 2
10-O648XX3	OBST LABOR D/T OTH MALPOS AND MALPRESENT FETUS 3
10-O648XX4	OBST LABOR D/T OTH MALPOS AND MALPRESENT FETUS 4
10-O648XX5	OBST LABOR D/T OTH MALPOS AND MALPRESENT FETUS 5
10-O648XX9	OBST LABOR DUE TO OTH MALPOS AND MALPRESENT OTH
10-O649	OBST LABOR DUE TO MALPOS AND MALPRESENT UNSP
10-O649XX0	OBST LABOR D/T MALPOS AND MALPRESENT UNSP UNSP
10-O649XX1	OBST LABOR D/T MALPOS AND MALPRESENT UNSP FTS 1
10-O649XX2	OBST LABOR D/T MALPOS AND MALPRESENT UNSP FTS 2
10-O649XX3	OBST LABOR D/T MALPOS AND MALPRESENT UNSP FTS 3
10-O649XX4	OBST LABOR D/T MALPOS AND MALPRESENT UNSP FTS 4
10-O649XX5	OBST LABOR D/T MALPOS AND MALPRESENT UNSP FTS 5
10-O649XX9	OBST LABOR DUE TO MALPOS AND MALPRESENT UNSP OTH
10-O65	OBST LABOR DUE TO MATERNAL PELVIC ABNORMALITY
10-O650	OBSTRUCTED LABOR DUE TO DEFORMED PELVIS
10-O651	OBST LABOR DUE TO GENERALLY CONTRACTED PELVIS
10-O652	OBSTRUCTED LABOR DUE TO PELVIC INLET CONTRACTION
10-O653	OBST LABOR D/T PELV OUTLET AND MID-CAV CONTRCTN
10-O654	OBSTRUCTED LABOR DUE TO FETOPELVIC DSPRP UNSP
10-O655	OBST LABOR DUE TO ABNLT OF MATERN PELVIC ORGANS
10-O658	OBST LABOR D/T OTHER MATERN PELVIC ABNORMALITY

Step 8 (negating diagnosis for pregnancy)	
Required diagnosis: 1	
Look back timeframe: 310 days	
ICD-10 Codes	Description
10-O659	OBST LABOR DUE TO MATERN PELVIC ABNORMALITY UNSP
10-O66	OTHER OBSTRUCTED LABOR
10-O660	OBSTRUCTED LABOR DUE TO SHOULDER DYSTOCIA
10-O661	OBSTRUCTED LABOR DUE TO LOCKED TWINS
10-O662	OBSTRUCTED LABOR DUE TO UNUSUALLY LARGE FETUS
10-O663	OBST LABOR DUE TO OTHER ABNORMALITY OF FETUS
10-O664	FAILED TRIAL OF LABOR
10-O6640	FAILED TRIAL OF LABOR, UNSPECIFIED
10-O6641	FAILED ATTEMPT VAG BIRTH AFTER PREV CESAREAN DEL
10-O665	ATTEMPT APPLICATION OF VACUUM EXTRACTOR&FORCEPS
10-O666	OBSTRUCTED LABOR DUE TO OTHER MULTIPLE FETUSES
10-O668	OTHER SPECIFIED OBSTRUCTED LABOR
10-O669	OBSTRUCTED LABOR, UNSPECIFIED
10-O67	L&D COMP BY INTRAPARTUM HEMORRHAGE NEC
10-O670	INTRAPARTUM HEMORRHAGE WITH COAGULATION DEFECT
10-O678	OTHER INTRAPARTUM HEMORRHAGE
10-O679	INTRAPARTUM HEMORRHAGE, UNSPECIFIED
10-O68	L&D COMP BY ABNLT OF FETAL ACID-BASE BALANCE
10-O69	L&D COMPLICATED BY UMBILICAL CORD COMP
10-O690	L&D COMPLICATED BY PROLAPSE OF CORD
10-O690XX0	L&D COMPLICATED BY PROLAPSE OF CORD UNSP
10-O690XX1	L&D COMPLICATED BY PROLAPSE OF CORD FETUS 1
10-O690XX2	L&D COMPLICATED BY PROLAPSE OF CORD FETUS 2
10-O690XX3	L&D COMPLICATED BY PROLAPSE OF CORD FETUS 3
10-O690XX4	L&D COMPLICATED BY PROLAPSE OF CORD FETUS 4
10-O690XX5	L&D COMPLICATED BY PROLAPSE OF CORD FETUS 5
10-O690XX9	L&D COMPLICATED BY PROLAPSE OF CORD OTH
10-O691	L&D COMP BY CORD AROUND NECK W COMPRESSION
10-O691XX0	L&D COMP BY CORD AROUND NECK W COMPRSN UNSP
10-O691XX1	LAB & DEL COMP BY CORD AROUND NK W COMPRSN FTS1
10-O691XX2	LAB & DEL COMP BY CORD AROUND NK W COMPRSN FTS2
10-O691XX3	LAB & DEL COMP BY CORD AROUND NK W COMPRSN FTS3
10-O691XX4	LAB & DEL COMP BY CORD AROUND NK W COMPRSN FTS4
10-O691XX5	LAB & DEL COMP BY CORD AROUND NK W COMPRSN FTS 5
10-O691XX9	L&D COMP BY CORD AROUND NECK W COMPRSN OTH
10-O692	L&D COMP BY OTH CORD ENTANGLE W COMPRESSION
10-O692XX0	LAB&DEL COMP BY OTH CORD ENTANGLE W COMPRSN UNSP
10-O692XX1	LAB&DEL COMP BY OTH CORD ENTANGLE W COMPRSN FTS1

Step 8 (negating diagnosis for pregnancy)	
Required diagnosis: 1	
Look back timeframe: 310 days	
ICD-10 Codes	Description
10-O692XX2	LAB&DEL COMP BY OTH CORD ENTANGLE W COMPRSN FTS2
10-O692XX3	LAB&DEL COMP BY OTH CORD ENTANGLE W COMPRSN FTS3
10-O692XX4	LAB&DEL COMP BY OTH CORD ENTANGLE W COMPRSN FTS4
10-O692XX5	LAB&DEL COMP BY OT CORD ENTANGLE W COMPRSN FTS 5
10-O692XX9	L&D COMP BY OTH CORD ENTANGLE W COMPRSN OTH
10-O693	LABOR AND DELIVERY COMPLICATED BY SHORT CORD
10-O693XX0	L&D COMPLICATED BY SHORT CORD UNSP
10-O693XX1	L&D COMPLICATED BY SHORT CORD FETUS 1
10-O693XX2	L&D COMPLICATED BY SHORT CORD FETUS 2
10-O693XX3	L&D COMPLICATED BY SHORT CORD FETUS 3
10-O693XX4	L&D COMPLICATED BY SHORT CORD FETUS 4
10-O693XX5	L&D COMPLICATED BY SHORT CORD FETUS 5
10-O693XX9	L&D COMPLICATED BY SHORT CORD OTHER FETUS
10-O694	LABOR AND DELIVERY COMPLICATED BY VASA PREVIA
10-O694XX0	L&D COMPLICATED BY VASA PREVIA UNSP
10-O694XX1	L&D COMPLICATED BY VASA PREVIA FETUS 1
10-O694XX2	L&D COMPLICATED BY VASA PREVIA FETUS 2
10-O694XX3	L&D COMPLICATED BY VASA PREVIA FETUS 3
10-O694XX4	L&D COMPLICATED BY VASA PREVIA FETUS 4
10-O694XX5	L&D COMPLICATED BY VASA PREVIA FETUS 5
10-O694XX9	L&D COMPLICATED BY VASA PREVIA OTHER FETUS
10-O695	L&D COMPLICATED BY VASCULAR LESION OF CORD
10-O695XX0	L&D COMP BY VASCULAR LESION OF CORD UNSP
10-O695XX1	L&D COMP BY VASCULAR LESION OF CORD FETUS 1
10-O695XX2	L&D COMP BY VASCULAR LESION OF CORD FETUS 2
10-O695XX3	L&D COMP BY VASCULAR LESION OF CORD FETUS 3
10-O695XX4	L&D COMP BY VASCULAR LESION OF CORD FETUS 4
10-O695XX5	L&D COMP BY VASCULAR LESION OF CORD FETUS 5
10-O695XX9	L&D COMP BY VASCULAR LESION OF CORD OTH
10-O698	L&D COMPLICATED BY OTHER CORD COMPLICATIONS
10-O6981	L&D COMP BY CORD AROUND NECK W/O COMPRESSION
10-O6981X0	LAB&DEL COMP BY CORD AROUND NK W/O COMPRSN UNSP
10-O6981X1	LAB&DEL COMP BY CORD AROUND NK W/O COMPRSN FTS1
10-O6981X2	LAB&DEL COMP BY CORD AROUND NK W/O COMPRSN FTS2
10-O6981X3	LAB&DEL COMP BY CORD AROUND NK W/O COMPRSN FTS3
10-O6981X4	LAB&DEL COMP BY CORD AROUND NK W/O COMPRSN FTS4
10-O6981X5	LAB&DEL COMP BY CORD AROUND NK W/O COMPRSN FTS 5
10-O6981X9	LAB & DEL COMP BY CORD AROUND NK W/O COMPRSN OTH

Step 8 (negating diagnosis for pregnancy)	
Required diagnosis: 1	
Look back timeframe: 310 days	
ICD-10 Codes	Description
10-O6982	L&D COMP BY OTH CORD ENTANGLE W/O COMPRSN
10-O6982X0	LAB&DEL COMP BY OT CORD ENTANGLE W/O COMPRSN USP
10-O6982X1	L&D COMP BY OT CORD ENTANGLE W/O COMPRSN FTS1
10-O6982X2	L&D COMP BY OT CORD ENTANGLE W/O COMPRSN FTS2
10-O6982X3	L&D COMP BY OT CORD ENTANGLE W/O COMPRSN FTS3
10-O6982X4	L&D COMP BY OT CORD ENTANGLE W/O COMPRSN FTS4
10-O6982X5	L&D COMP BY OT CORD ENTANGLE W/O COMPRSN FTS5
10-O6982X9	LAB&DEL COMP BY OT CORD ENTANGLE W/O COMPRSN OT
10-O6989	L&D COMPLICATED BY OTHER CORD COMPLICATIONS
10-O6989X0	L&D COMPLICATED BY OTH CORD COMP UNSP
10-O6989X1	L&D COMPLICATED BY OTH CORD COMP FETUS 1
10-O6989X2	L&D COMPLICATED BY OTH CORD COMP FETUS 2
10-O6989X3	L&D COMPLICATED BY OTH CORD COMP FETUS 3
10-O6989X4	L&D COMPLICATED BY OTH CORD COMP FETUS 4
10-O6989X5	L&D COMPLICATED BY OTH CORD COMP FETUS 5
10-O6989X9	L&D COMPLICATED BY OTH CORD COMP OTH
10-O699	L&D COMPLICATED BY CORD COMPLICATION UNSP
10-O699XX0	L&D COMPLICATED BY CORD COMP UNSP UNSP
10-O699XX1	L&D COMPLICATED BY CORD COMP UNSP FETUS 1
10-O699XX2	L&D COMPLICATED BY CORD COMP UNSP FETUS 2
10-O699XX3	L&D COMPLICATED BY CORD COMP UNSP FETUS 3
10-O699XX4	L&D COMPLICATED BY CORD COMP UNSP FETUS 4
10-O699XX5	L&D COMPLICATED BY CORD COMP UNSP FETUS 5
10-O699XX9	L&D COMPLICATED BY CORD COMP UNSP OTH
10-O70	PERINEAL LACERATION DURING DELIVERY
10-O700	FIRST DEGREE PERINEAL LACERATION DURING DELIVERY
10-O701	SECOND DEGREE PERINEAL LACERAT DURING DELIVERY
10-O702	THIRD DEGREE PERINEAL LACERATION DURING DELIVERY
10-O703	FOURTH DEGREE PERINEAL LACERAT DURING DELIVERY
10-O704	ANL SPHNCTR TEAR COMP DEL NOT ASSOC W 3RD DG LAC
10-O709	PERINEAL LACERATION DURING DELIVERY, UNSPECIFIED
10-O71	OTHER OBSTETRIC TRAUMA
10-O710	RUPTURE OF UTERUS BEFORE ONSET OF LABOR
10-O7100	RUPTURE OF UTERUS BEFORE ONSET OF LABOR UNSP TRI
10-O7102	RUP OF UTERUS BEFORE ONSET OF LABOR SECOND TRI
10-O7103	RUP OF UTERUS BEFORE ONSET OF LABOR THIRD TRI
10-O711	RUPTURE OF UTERUS DURING LABOR
10-O712	POSTPARTUM INVERSION OF UTERUS

Step 8 (negating diagnosis for pregnancy)	
Required diagnosis: 1	
Look back timeframe: 310 days	
ICD-10 Codes	Description
10-O713	OBSTETRIC LACERATION OF CERVIX
10-O714	OBSTETRIC HIGH VAGINAL LACERATION ALONE
10-O715	OTHER OBSTETRIC INJURY TO PELVIC ORGANS
10-O716	OBSTETRIC DAMAGE TO PELVIC JOINTS AND LIGAMENTS
10-O717	OBSTETRIC HEMATOMA OF PELVIS
10-O718	OTHER SPECIFIED OBSTETRIC TRAUMA
10-O7181	LACERATION OF UTERUS, NOT ELSEWHERE CLASSIFIED
10-O7182	OTHER SPECIFIED TRAUMA TO PERINEUM AND VULVA
10-O7189	OTHER SPECIFIED OBSTETRIC TRAUMA
10-O719	OBSTETRIC TRAUMA, UNSPECIFIED
10-O72	POSTPARTUM HEMORRHAGE
10-O720	THIRD-STAGE HEMORRHAGE
10-O721	OTHER IMMEDIATE POSTPARTUM HEMORRHAGE
10-O722	DELAYED AND SECONDARY POSTPARTUM HEMORRHAGE
10-O723	POSTPARTUM COAGULATION DEFECTS
10-O73	RETAINED PLACENTA AND MEMBRANES WITHOUT HEMOR
10-O730	RETAINED PLACENTA WITHOUT HEMORRHAGE
10-O731	RETAIN PORTIONS OF PLACENTA AND MEMBRANES W/O HEMOR
10-O74	COMPLICATIONS OF ANESTHESIA DURING L&D
10-O740	ASPIRATED PNEUMONITIS DUE TO ANESTHESIA DURING L&D
10-O741	OTHER PULMONARY COMPLICATIONS OF ANESTHESIA DURING L&D
10-O742	CARDIAC COMPLICATIONS OF ANESTHESIA DURING L&D
10-O743	CNS/SPINAL COMPLICATIONS OF ANESTHESIA DURING L&D
10-O744	TOXIC REACTION TO LOCAL ANESTHESIA DURING L&D
10-O745	SPINAL/EPIDURAL ANESTHESIA-INDUCED HEADACHE DURING LABOR/DELIVERY
10-O746	OTHER COMPLICATIONS OF SPINAL & EPIDURAL ANESTHESIA DURING LABOR & DELIVERY
10-O747	FAILURE OR DIFFICULT INTUBATION FOR ANESTHESIA DURING L&D
10-O748	OTHER COMPLICATIONS OF ANESTHESIA DURING L&D
10-O749	COMPLICATION OF ANESTHESIA DURING L&D UNSPECIFIED
10-O75	OTHER COMPLICATIONS OF LABOR AND DELIVERY, NEC
10-O750	MATERNAL DISTRESS DURING LABOR AND DELIVERY
10-O751	SHOCK DURING OR FOLLOWING LABOR AND DELIVERY
10-O752	PYREXIA DURING LABOR, NOT ELSEWHERE CLASSIFIED
10-O753	OTHER INFECTION DURING LABOR
10-O754	OTHER COMPLICATIONS OF OBSTETRIC SURGERY AND PROCEDURES
10-O755	DELAYED DELIVERY AFTER ARTIFICIAL RUPTURE OF MEMBRANES
10-O758	OTHER SPECIFIED COMPLICATIONS OF L&D
10-O7581	MATERNAL EXHAUSTION COMPLICATING L&D

Step 8 (negating diagnosis for pregnancy)	
Required diagnosis: 1	
Look back timeframe: 310 days	
ICD-10 Codes	Description
10-O7582	ONSET LAB 37-39 WEEKS W DEL BY CESAREAN SECTION
10-O7589	OTHER SPECIFIED COMPLICATIONS OF L&D
10-O759	COMPLICATION OF LABOR AND DELIVERY, UNSPECIFIED
10-O76	ABNLT IN FETAL HEART RATE AND RHYTHM COMP L&D
10-O77	OTHER FETAL STRESS COMPLICATING L&D
10-O770	L&D COMPLICATED BY MECONIUM IN AMNIOTIC FLUID
10-O771	FETAL STRESS IN LABOR OR DEL DUE TO DRUG ADMIN
10-O778	L&D COMP BY OTH EVIDENCE OF FETAL STRESS
10-O779	L&D COMPLICATED BY FETAL STRESS UNSPECIFIED
10-O80	ENCOUNTER FOR FULL-TERM UNCOMPLICATED DELIVERY
10-O82	ECTR FOR CESAREAN DELIVERY WITHOUT INDICATION
10-O85	PUERPERAL SEPSIS
10-O860	INFECTION OF OBSTETRIC SURGICAL WOUND
10-O861	OTHER INFECTION GENITAL TRACT FOLLOWING DELIVERY
10-O8611	CERVICITIS FOLLOWING DELIVERY
10-O8612	ENDOMETRITIS FOLLOWING DELIVERY
10-O8613	VAGINITIS FOLLOWING DELIVERY
10-O8619	OTHER INFECTION GENITAL TRACT FOLLOWING DELIVERY
10-O862	URINARY TRACT INFECTION FOLLOWING DELIVERY
10-O8620	URINARY TRACT INFECTION FOLLOWING DELIVERY USP
10-O8621	INFECTION OF KIDNEY FOLLOWING DELIVERY
10-O8622	INFECTION OF BLADDER FOLLOWING DELIVERY
10-O8629	OTHER URINARY TRACT INFECTION FOLLOWING DELIVERY
10-O864	PYREXIA OF UNKNOWN ORIGIN FOLLOWING DELIVERY
10-O868	OTHER SPECIFIED PUERPERAL INFECTIONS
10-O8681	PUERPERAL SEPTIC THROMBOPHLEBITIS
10-O8689	OTHER SPECIFIED PUERPERAL INFECTIONS
10-O870	SUPERFICIAL THROMBOPHLEBITIS IN THE PUERPERIUM
10-O871	DEEP PHLEBOTHROMBOSIS IN THE PUERPERIUM
10-O872	HEMORRHOIDS IN THE PUERPERIUM
10-O873	CEREBRAL VENOUS THROMBOSIS IN THE PUERPERIUM
10-O874	VARICOSE VEINS OF LOWER EXTREMITY IN THE PUERP
10-O878	OTHER VENOUS COMPLICATIONS IN THE PUERPERIUM
10-O879	VENOUS COMPL IN THE PUERPERIUM UNSPECIFIED
10-O8802	AIR EMBOLISM IN CHILDBIRTH
10-O8803	AIR EMBOLISM IN THE PUERPERIUM
10-O8811	AMNIOTIC FLUID EMBOLISM IN PREGNANCY
10-O8812	AMNIOTIC FLUID EMBOLISM IN CHILDBIRTH

Step 8 (negating diagnosis for pregnancy)	
Required diagnosis: 1	
Look back timeframe: 310 days	
ICD-10 Codes	Description
10-O8813	AMNIOTIC FLUID EMBOLISM IN THE PUERPERIUM
10-O8822	THROMBOEMBOLISM IN CHILDBIRTH
10-O8823	THROMBOEMBOLISM IN THE PUERPERIUM
10-O8832	PYEMIC AND SEPTIC EMBOLISM IN CHILDBIRTH
10-O8833	PYEMIC AND SEPTIC EMBOLISM IN THE PUERPERIUM
10-O8882	OTHER EMBOLISM IN CHILDBIRTH
10-O8883	OTHER EMBOLISM IN THE PUERPERIUM
10-O890	PULMONARY COMP OF ANESTH DURING THE PUERPERIUM
10-O8901	ASPIRAT PNEUMONITIS D/T ANESTH DURING THE PUERP
10-O8909	OTH PULMONARY COMP OF ANESTH DURING THE PUERP
10-O891	CARDIAC COMP OF ANESTHESIA DURING THE PUERPERIUM
10-O892	CNSL COMP OF ANESTHESIA DURING THE PUERPERIUM
10-O893	TOXIC REACTION TO LOCAL ANESTH DURING THE PUERP
10-O894	SPINAL&EPIDUR ANESTH-INDUC HDACHE DUR THE PUERP
10-O895	OTH COMP OF SPINAL & EPIDUR ANESTH DUR THE PUERP
10-O896	FAIL OR DIFFC INTUBA FOR ANESTH DUR THE PUERP
10-O898	OTHER COMP OF ANESTHESIA DURING THE PUERPERIUM
10-O899	COMPL OF ANESTHESIA DURING THE PUERPERIUM UNSP
10-O90	COMP OF THE PUERPERIUM NOT ELSEWHERE CLASSIFIED
10-O900	DISRUPTION OF CESAREAN DELIVERY WOUND
10-O901	DISRUPTION OF PERINEAL OBSTETRIC WOUND
10-O902	HEMATOMA OF OBSTETRIC WOUND
10-O903	PERIPARTUM CARDIOMYOPATHY
10-O904	POSTPARTUM ACUTE KIDNEY FAILURE
10-O905	POSTPARTUM THYROIDITIS
10-O906	POSTPARTUM MOOD DISTURBANCE
10-O908	OTH COMPLICATIONS OF THE PUERPERIUM, NEC
10-O9081	ANEMIA OF THE PUERPERIUM
10-O9089	OTH COMPLICATIONS OF THE PUERPERIUM, NEC
10-O909	COMPLICATION OF THE PUERPERIUM, UNSPECIFIED
10-O9102	INFECTION NIPPLE ASSOCIATED WITH THE PUERPERIUM
10-O9103	INFECTION OF NIPPLE ASSOCIATED WITH LACTATION
10-O9112	ABSCESS OF BREAST ASSOCIATED WITH THE PUERPERIUM
10-O9113	ABSCESS OF BREAST ASSOCIATED WITH LACTATION
10-O9122	NONPURULENT MASTITIS ASSOC WITH THE PUERPERIUM
10-O9123	NONPURULENT MASTITIS ASSOCIATED WITH LACTATION
10-O9202	RETRACTED NIPPLE ASSOCIATED WITH THE PUERPERIUM
10-O9203	RETRACTED NIPPLE ASSOCIATED WITH LACTATION

Step 8 (negating diagnosis for pregnancy)	
Required diagnosis: 1	
Look back timeframe: 310 days	
ICD-10 Codes	Description
10-O9212	CRACKED NIPPLE ASSOCIATED WITH THE PUERPERIUM
10-O9213	CRACKED NIPPLE ASSOCIATED WITH LACTATION
10-O9802	TUBERCULOSIS COMPLICATING CHILDBIRTH
10-O9812	SYPHILIS COMPLICATING CHILDBIRTH
10-O9822	GONORRHEA COMPLICATING CHILDBIRTH
10-O9832	OTH INF W SEXL MODE OF TRANSMISS COMP CHLDBRTH
10-O9842	VIRAL HEPATITIS COMPLICATING CHILDBIRTH
10-O9852	OTHER VIRAL DISEASES COMPLICATING CHILDBIRTH
10-O9862	PROTOZOAL DISEASES COMPLICATING CHILDBIRTH
10-O9872	HUMAN IMMUNODEF VIRUS DISEASE COMP CHILDBIRTH
10-O9882	OTH MATERNAL INFEC/PARASTC DIS COMP CHLDBRTH
10-O9892	UNSP MATERN INFEC/PARASTC DISEASE COMP CHLDBRTH
10-O9902	ANEMIA COMPLICATING CHILDBIRTH
10-O9912	OT DIS BLD/BLD-FORM ORG/IMM MECH COMP CHLDBRTH
10-O99214	OBESITY COMPLICATING CHILDBIRTH
10-O99284	ENDO NUTRITIONAL AND METAB DIS COMP CHLDBRTH
10-O99314	ALCOHOL USE COMPLICATING CHILDBIRTH
10-O99324	DRUG USE COMPLICATING CHILDBIRTH
10-O99334	SMOKING (TOBACCO) COMPLICATING CHILDBIRTH
10-O99344	OTHER MENTAL DISORDERS COMPLICATING CHILDBIRTH
10-O99354	DISEASES OF THE NERVOUS SYSTEM COMP CHILDBIRTH
10-O9942	DISEASES OF THE CIRC SYSTEM COMP CHILDBIRTH
10-O9952	DISEASES OF THE RESP SYSTEM COMP CHILDBIRTH
10-O9962	DISEASES OF THE DIGESTIVE SYSTEM COMP CHILDBIRTH
10-O9972	DISEASES OF THE SKIN SUBCU COMP CHILDBIRTH
10-O99814	ABNORMAL GLUCOSE COMPLICATING CHILDBIRTH
10-O99824	STREPTOCOCCUS B CARRIER STATE COMP CHILDBIRTH
10-O99834	OTHER INFECTION CARRIER STATE COMP CHILDBIRTH
10-O99844	BARIATRIC SURGERY STATUS COMPLICATING CHILDBIRTH
10-O9A12	MALIGNANT NEOPLASM COMPLICATING CHILDBIRTH
10-O9A22	INJ/POISN/OTH CONSEQ OF EXT CAUSES COMP CHLDBRTH
10-O9A32	PHYSICAL ABUSE COMPLICATING CHILDBIRTH
10-O9A42	SEXUAL ABUSE COMPLICATING CHILDBIRTH
10-O9A52	PSYCHOLOGICAL ABUSE COMPLICATING CHILDBIRTH
10-Z37	OUTCOME OF DELIVERY
10-Z370	SINGLE LIVE BIRTH
10-Z371	SINGLE STILLBIRTH
10-Z372	TWINS, BOTH LIVEBORN

Step 8 (negating diagnosis for pregnancy)	
Required diagnosis: 1	
Look back timeframe: 310 days	
ICD-10 Codes	Description
10-Z373	TWINS, ONE LIVEBORN AND ONE STILLBORN
10-Z374	TWINS, BOTH STILLBORN
10-Z375	OTHER MULTIPLE BIRTHS, ALL LIVEBORN
10-Z3750	MULTIPLE BIRTHS, UNSPECIFIED, ALL LIVEBORN
10-Z3751	TRIPLETS, ALL LIVEBORN
10-Z3752	QUADRUPLETS, ALL LIVEBORN
10-Z3753	QUINTUPLETS, ALL LIVEBORN
10-Z3754	SEXTUPLETS, ALL LIVEBORN
10-Z3759	OTHER MULTIPLE BIRTHS, ALL LIVEBORN
10-Z376	OTHER MULTIPLE BIRTHS, SOME LIVEBORN
10-Z3760	MULTIPLE BIRTHS, UNSPECIFIED, SOME LIVEBORN
10-Z3761	TRIPLETS, SOME LIVEBORN
10-Z3762	QUADRUPLETS, SOME LIVEBORN
10-Z3763	QUINTUPLETS, SOME LIVEBORN
10-Z3764	SEXTUPLETS, SOME LIVEBORN
10-Z3769	OTHER MULTIPLE BIRTHS, SOME LIVEBORN
10-Z377	OTHER MULTIPLE BIRTHS, ALL STILLBORN
10-Z379	OUTCOME OF DELIVERY, UNSPECIFIED
10-Z38	LIVEBORN INFANTS ACCORDING TO PLC BRTH&TP DEL
10-Z380	SINGLE LIVEBORN INFANT, BORN IN HOSPITAL
10-Z3800	SINGLE LIVEBORN INFANT, DELIVERED VAGINALLY
10-Z3801	SINGLE LIVEBORN INFANT, DELIVERED BY CESAREAN
10-Z381	SINGLE LIVEBORN INFANT, BORN OUTSIDE HOSPITAL
10-Z382	SINGLE LIVEBORN INFANT USP AS TO PLACE OF BIRTH
10-Z383	TWIN LIVEBORN INFANT, BORN IN HOSPITAL
10-Z3830	TWIN LIVEBORN INFANT, DELIVERED VAGINALLY
10-Z3831	TWIN LIVEBORN INFANT, DELIVERED BY CESAREAN
10-Z384	TWIN LIVEBORN INFANT, BORN OUTSIDE HOSPITAL
10-Z385	TWIN LIVEBORN INFANT USP AS TO PLACE OF BIRTH
10-Z386	OTHER MULTIPLE LIVEBORN INFANT, BORN IN HOSPITAL
10-Z3861	TRIPLET LIVEBORN INFANT, DELIVERED VAGINALLY
10-Z3862	TRIPLET LIVEBORN INFANT, DELIVERED BY CESAREAN
10-Z3863	QUADRUPLET LIVEBORN INFANT, DELIVERED VAGINALLY
10-Z3864	QUADRUPLET LIVEBORN INFANT DELIVERED BY CESAREAN
10-Z3865	QUINTUPLET LIVEBORN INFANT, DELIVERED VAGINALLY
10-Z3866	QUINTUPLET LIVEBORN INFANT DELIVERED BY CESAREAN
10-Z3868	OTHER MLT LIVEBORN INFANT DELIVERED VAGINALLY
10-Z3869	OTHER MLT LIVEBORN INFANT DELIVERED BY CESAREAN

Step 8 (negating diagnosis for pregnancy)	
Required diagnosis: 1	
Look back timeframe: 310 days	
ICD-10 Codes	Description
10-Z387	OTHER MLT LIVEBORN INFANT BORN OUTSIDE HOSPITAL
10-Z388	OTH MLT LIVEBORN INFANT UNSP AS TO PLC OF BIRTH



Savella (Milnacipran)

Clinical Criteria References

1. Clinical Pharmacology [online database]. Tampa, FL: Elsevier/Gold Standard, Inc.; 2015. Available at www.clinicalpharmacology.com. Accessed on September 3, 2015.
2. 2015 ICD-9-CM Diagnosis Codes, Volume 1. 2015. Available at www.icd9data.com. Accessed on September 3, 2015.
3. 2015 ICD-10-CM Diagnosis Codes, Volume 1. 2015. Available at www.icd10data.com. Accessed on September 3, 2015.
4. Savella Prescribing Information. Forest Laboratories, LLC. St. Louis, Mo. January 2015.
5. Bril V, England J, Franklin GM, et al. Evidence-based guideline: treatment of painful diabetic neuropathy. Report of the American Academy of Neurology, the American Association of Neuromuscular and Electrodiagnostic Medicine and the American Academy of Physical Medicine and Rehabilitation. *Neurology*. 2011 May 17;76(20):1758-65.



Savella (Milnacipran)

Publication History

Publication History

The Publication History records the publication iterations and revisions to this document. Notes for the *most current revision* are also provided in the **Revision Notes** on the first page of this document.

Publication Date	Notes
10/22/2015	Presented to the DUR Board
11/30/2015	Updated age criteria to ≥ 18 years in question 1 of the clinical edit criteria logic and logic diagram
03/29/2019	Updated to include formulary statement (The listed GCNS may not be an indication of TX Medicaid Formulary coverage. To learn the current formulary coverage, visit TxVendorDrug.com/formulary/formulary-search .) on each 'Drug Requiring PA' table