

**Texas Prior Authorization Program  
Clinical Criteria**

---

**Drug/Drug Class**

**Xyrem/Xywav (Oxybate products)**

**Clinical Criteria Information Included in this Document**

- **Drugs requiring prior authorization:** the list of drugs requiring prior authorization for this clinical criteria
- **Prior authorization criteria logic:** a description of how the prior authorization request will be evaluated against the clinical criteria rules
- **Logic diagram:** a visual depiction of the clinical criteria logic
- **Supporting tables:** a collection of information associated with the steps within the criteria (diagnosis codes, procedure codes, and therapy codes); provided when applicable

**Note:** Click the hyperlink to navigate directly to that section.

**Revision Notes**

Adding criteria for Xywav as approved by the DUR Board



## Xyrem/Xywav (Oxybate products)

### Drugs Requiring Prior Authorization

The listed GCNS may not be an indication of TX Medicaid Formulary coverage. To learn the current formulary coverage, visit [TxVendorDrug.com/formulary/formulary-search](http://TxVendorDrug.com/formulary/formulary-search).

Drugs Requiring Prior Authorization	
Label Name	GCN
XYREM 500 MG/ML ORAL SOLUTION	18104
XYWAV 0.5 G/ML SOLUTION	48419



## Xyrem/Xywav (Oxybate products)

### Clinical Criteria Logic

1. Is the medication being prescribed by, or in consultation with, a neurologist or sleep specialist or has the client had a sleep study with a sleep latency test?

[Manual]

Yes (Go to #2)

No (Deny)

2. Is the client less than (<) 7 years of age?

Yes (Deny)

No (Go to #3)

3. Does the client have a **diagnosis of alcohol or substance abuse** in the last 730 days?

Yes (Deny)

No (Go to #4)

4. Does the client have a claim for a **CNS depressant agent** in the last 60 days?

Yes (Deny)

No (Go to #5)

5. Is the requested dose per day less than or equal to ( $\leq$ ) 9 grams?

Yes (Go to #6)

No (Deny)

6. Does the client have a **diagnosis of narcolepsy or cataplexy** in the last 730 days?

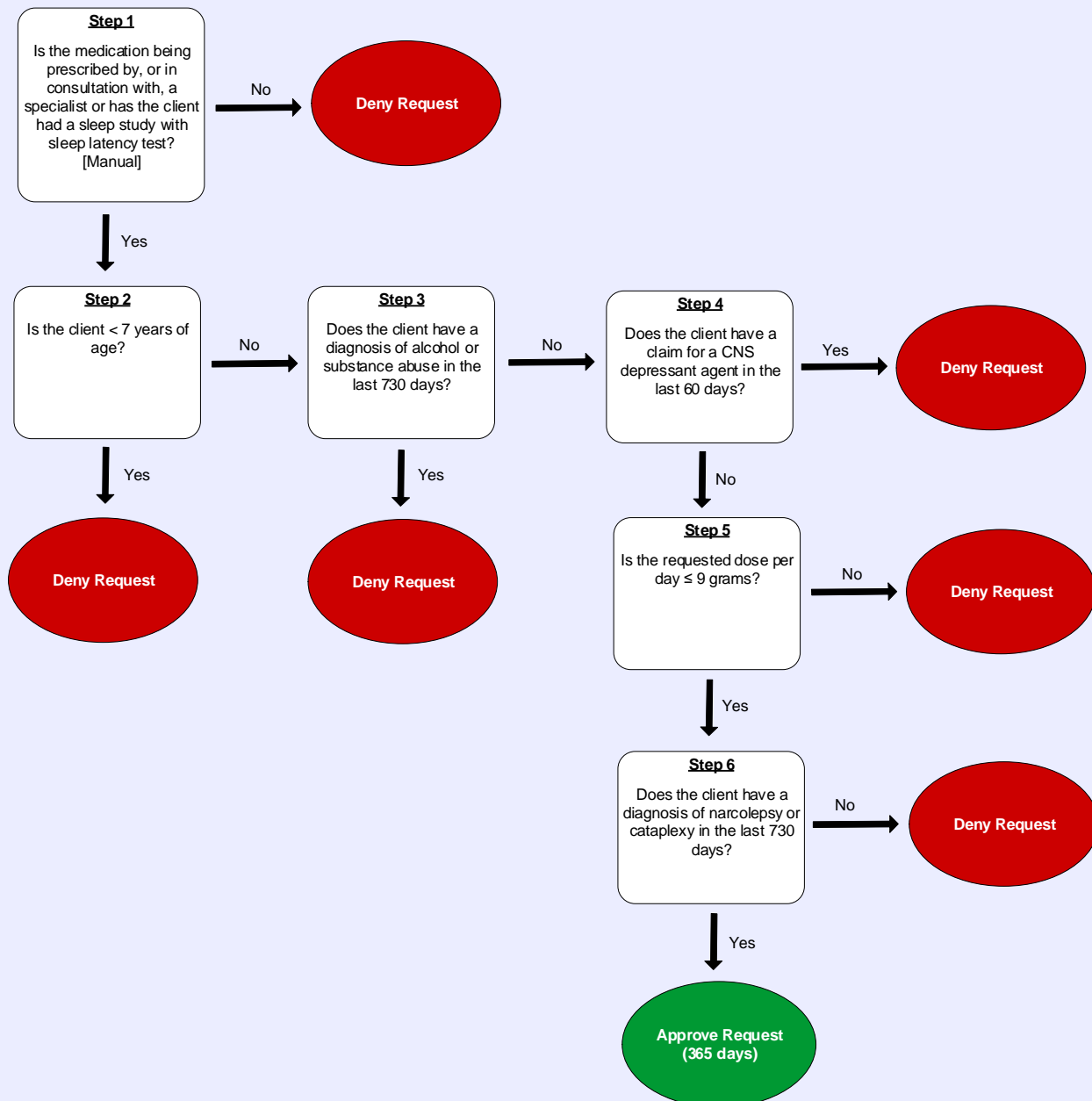
Yes (Approve – 365 days)

No (Deny)



# Xyrem/Xywav (Oxybate products)

## Clinical Criteria Logic Diagram





## Xyrem/Xywav (Oxybate products)

### Clinical Criteria Supporting Tables

<b>Step 3 (diagnosis of alcohol or substance abuse)</b>	
<b>Required diagnosis: 1</b>	
<b>Look back timeframe: 730 days</b>	
<b>ICD-10 Code</b>	<b>Description</b>
F1010	ALCOHOL ABUSE, UNCOMPLICATED
F10120	ALCOHOL ABUSE WITH INTOXICATION, UNCOMPLICATED
F10129	ALCOHOL ABUSE WITH INTOXICATION, UNSPECIFIED
F1020	ALCOHOL DEPENDENCE, UNCOMPLICATED
F1021	ALCOHOL DEPENDENCE, IN REMISSION
F10220	ALCOHOL DEPENDENCE WITH INTOXICATION, UNCOMPLICATED
F10229	ALCOHOL DEPENDENCE WITH INTOXICATION, UNSPECIFIED
F1110	OPIOID ABUSE, UNCOMPLICATED
F11120	OPIOID ABUSE WITH INTOXICATION, UNCOMPLICATED
F11129	OPIOID ABUSE WITH INTOXICATION, UNSPECIFIED
F1120	OPIOID DEPENDENCE, UNCOMPLICATED
F1121	OPIOID DEPENDENCE, IN REMISSION
F11220	OPIOID DEPENDENCE WITH INTOXICATION, UNCOMPLICATED
F11221	OPIOID DEPENDENCE WITH INTOXICATION DELIRIUM
F11222	OPIOID DEPENDENCE WITH INTOXICATION WITH PERCEPTUAL DISTURBANCE
F11229	OPIOID DEPENDENCE WITH INTOXICATION, UNSPECIFIED
F1123	OPIOID DEPENDENCE WITH WITHDRAWAL
F1124	OPIOID DEPENDENCE WITH OPIOID-INDUCED MOOD DISORDER
F11250	OPIOID DEPENDENCE WITH OPIOID-INDUCED PSYCHOTIC DISORDER WITH DELUSIONS
F11251	OPIOID DEPENDENCE WITH OPIOID-INDUCED PSYCHOTIC DISORDER WITH HALLUCINATIONS
F11259	OPIOID DEPENDENCE WITH OPIOID-INDUCED PSYCHOTIC DISORDER, UNSPECIFIED
F11281	OPIOID DEPENDENCE WITH OPIOID-INDUCED SEXUAL DYSFUNCTION
F11282	OPIOID DEPENDENCE WITH OPIOID-INDUCED SLEEP DISORDER
F11288	OPIOID DEPENDENCE WITH OTHER OPIOID-INDUCED DISORDER
F1129	OPIOID DEPENDENCE WITH UNSPECIFIED OPIOID-INDUCED DISORDER
F1190	OPIOID USE, UNSPECIFIED, UNCOMPLICATED
F1210	CANNABIS ABUSE, UNCOMPLICATED

<b>Step 3 (diagnosis of alcohol or substance abuse)</b>	
<b>Required diagnosis: 1</b>	
<b>Look back timeframe: 730 days</b>	
<b>ICD-10 Code</b>	<b>Description</b>
F1220	CANNABIS DEPENDENCE, UNCOMPLICATED
F1221	CANNABIS DEPENDENCE, IN REMISSION
F12220	CANNABIS DEPENDENCE WITH INTOXICATION, UNCOMPLICATED
F12221	CANNABIS DEPENDENCE WITH INTOXICATION DELIRIUM
F12222	CANNABIS DEPENDENCE WITH INTOXICATION WITH PERCEPTUAL DISTURBANCE
F12229	CANNABIS DEPENDENCE WITH INTOXICATION, UNSPECIFIED
F12250	CANNABIS DEPENDENCE WITH PSYCHOTIC DISORDER WITH DELUSIONS
F12251	CANNABIS DEPENDENCE WITH PSYCHOTIC DISORDER WITH HALLUCINATIONS
F12259	CANNABIS DEPENDENCE WITH PSYCHOTIC DISORDER, UNSPECIFIED
F12280	CANNABIS DEPENDENCE WITH CANNABIS-INDUCED ANXIETY DISORDER
F12288	CANNABIS DEPENDENCE WITH OTHER CANNABIS-INDUCED DISORDER
F1229	CANNABIS DEPENDENCE WITH UNSPECIFIED CANNABIS-INDUCED DISORDER
F1290	CANNABIS USE, UNSPECIFIED, UNCOMPLICATED
F1310	SEDATIVE, HYPNOTIC OR ANXIOLYTIC ABUSE, UNCOMPLICATED
F13120	SEDATIVE, HYPNOTIC OR ANXIOLYTIC ABUSE WITH INTOXICATION, UNCOMPLICATED
F1320	SEDATIVE, HYPNOTIC OR ANXIOLYTIC DEPENDENCE, UNCOMPLICATED
F1321	SEDATIVE, HYPNOTIC OR ANXIOLYTIC DEPENDENCE, IN REMISSION
F13220	SEDATIVE, HYPNOTIC OR ANXIOLYTIC DEPENDENCE WITH INTOXICATION, UNCOMPLICATED
F13221	SEDATIVE, HYPNOTIC OR ANXIOLYTIC DEPENDENCE WITH INTOXICATION DELIRIUM
F13229	SEDATIVE, HYPNOTIC OR ANXIOLYTIC DEPENDENCE WITH INTOXICATION, UNSPECIFIED
F13230	SEDATIVE, HYPNOTIC OR ANXIOLYTIC DEPENDENCE WITH WITHDRAWAL, UNCOMPLICATED
F13231	SEDATIVE, HYPNOTIC OR ANXIOLYTIC DEPENDENCE WITH WITHDRAWAL DELIRIUM
F13232	SEDATIVE, HYPNOTIC OR ANXIOLYTIC DEPENDENCE WITH WITHDRAWAL WITH PERCEPTUAL DISTURBANCE
F13239	SEDATIVE, HYPNOTIC OR ANXIOLYTIC DEPENDENCE WITH WITHDRAWAL, UNSPECIFIED
F1324	SEDATIVE, HYPNOTIC OR ANXIOLYTIC DEPENDENCE WITH SEDATIVE, HYPNOTIC OR ANXIOLYTIC-INDUCED MOOD DISORDER
F13250	SEDATIVE, HYPNOTIC OR ANXIOLYTIC DEPENDENCE WITH SEDATIVE, HYPNOTIC OR ANXIOLYTIC-INDUCED PSYCHOTIC DISORDER WITH DELUSIONS
F13251	SEDATIVE, HYPNOTIC OR ANXIOLYTIC DEPENDENCE WITH SEDATIVE, HYPNOTIC OR ANXIOLYTIC-INDUCED PSYCHOTIC DISORDER WITH HALLUCINATIONS

<b>Step 3 (diagnosis of alcohol or substance abuse)</b>	
<b>Required diagnosis: 1</b>	
<b>Look back timeframe: 730 days</b>	
<b>ICD-10 Code</b>	<b>Description</b>
F13259	SEDATIVE, HYPNOTIC OR ANXIOLYTIC DEPENDENCE WITH SEDATIVE, HYPNOTIC OR ANXIOLYTIC-INDUCED PSYCHOTIC DISORDER, UNSPECIFIED
F1326	SEDATIVE, HYPNOTIC OR ANXIOLYTIC DEPENDENCE WITH SEDATIVE, HYPNOTIC OR ANXIOLYTIC-INDUCED PERSISTING AMNESTIC DISORDER
F1327	SEDATIVE, HYPNOTIC OR ANXIOLYTIC DEPENDENCE WITH SEDATIVE, HYPNOTIC OR ANXIOLYTIC-INDUCED PERSISTING DEMENTIA
F13280	SEDATIVE, HYPNOTIC OR ANXIOLYTIC DEPENDENCE WITH SEDATIVE, HYPNOTIC OR ANXIOLYTIC-INDUCED ANXIETY DISORDER
F13281	SEDATIVE, HYPNOTIC OR ANXIOLYTIC DEPENDENCE WITH SEDATIVE, HYPNOTIC OR ANXIOLYTIC-INDUCED SEXUAL DYSFUNCTION
F13282	SEDATIVE, HYPNOTIC OR ANXIOLYTIC DEPENDENCE WITH SEDATIVE, HYPNOTIC OR ANXIOLYTIC-INDUCED SLEEP DISORDER
F13288	SEDATIVE, HYPNOTIC OR ANXIOLYTIC DEPENDENCE WITH OTHER SEDATIVE, HYPNOTIC OR ANXIOLYTIC-INDUCED DISORDER
F1329	SEDATIVE, HYPNOTIC OR ANXIOLYTIC DEPENDENCE WITH UNSPECIFIED SEDATIVE, HYPNOTIC OR ANXIOLYTIC-INDUCED DISORDER
F1390	SEDATIVE, HYPNOTIC, OR ANXIOLYTIC USE, UNSPECIFIED, UNCOMPLICATED
F1410	COCAINE ABUSE, UNCOMPLICATED
F14120	COCAINE ABUSE WITH INTOXICATION, UNCOMPLICATED
F1420	COCAINE DEPENDENCE, UNCOMPLICATED
F1421	COCAINE DEPENDENCE, IN REMISSION
F14220	COCAINE DEPENDENCE WITH INTOXICATION, UNCOMPLICATED
F14221	COCAINE DEPENDENCE WITH INTOXICATION DELIRIUM
F14222	COCAINE DEPENDENCE WITH INTOXICATION WITH PERCEPTUAL DISTURBANCE
F14229	COCAINE DEPENDENCE WITH INTOXICATION, UNSPECIFIED
F1423	COCAINE DEPENDENCE WITH WITHDRAWAL
F1424	COCAINE DEPENDENCE WITH COCAINE-INDUCED MOOD DISORDER
F14250	COCAINE DEPENDENCE WITH COCAINE-INDUCED PSYCHOTIC DISORDER WITH DELUSIONS
F14251	COCAINE DEPENDENCE WITH COCAINE-INDUCED PSYCHOTIC DISORDER WITH HALLUCINATIONS
F14259	COCAINE DEPENDENCE WITH COCAINE-INDUCED PSYCHOTIC DISORDER, UNSPECIFIED
F14280	COCAINE DEPENDENCE WITH COCAINE-INDUCED ANXIETY DISORDER
F14281	COCAINE DEPENDENCE WITH COCAINE-INDUCED SEXUAL DYSFUNCTION
F14282	COCAINE DEPENDENCE WITH COCAINE-INDUCED SLEEP DISORDER
F14288	COCAINE DEPENDENCE WITH OTHER COCAINE-INDUCED DISORDER
F1429	COCAINE DEPENDENCE WITH UNSPECIFIED COCAINE-INDUCED DISORDER

<b>Step 3 (diagnosis of alcohol or substance abuse)</b>	
<b>Required diagnosis: 1</b>	
<b>Look back timeframe: 730 days</b>	
<b>ICD-10 Code</b>	<b>Description</b>
F1490	COCAINE USE, UNSPECIFIED, UNCOMPLICATED
F1510	OTHER STIMULANT ABUSE, UNCOMPLICATED
F15120	OTHER STIMULANT ABUSE WITH INTOXICATION, UNCOMPLICATED
F1520	OTHER STIMULANT DEPENDENCE, UNCOMPLICATED
F1521	OTHER STIMULANT DEPENDENCE, IN REMISSION
F15220	OTHER STIMULANT DEPENDENCE WITH INTOXICATION, UNCOMPLICATED
F15221	OTHER STIMULANT DEPENDENCE WITH INTOXICATION DELIRIUM
F15222	OTHER STIMULANT DEPENDENCE WITH INTOXICATION WITH PERCEPTUAL DISTURBANCE
F15229	OTHER STIMULANT DEPENDENCE WITH INTOXICATION, UNSPECIFIED
F1523	OTHER STIMULANT DEPENDENCE WITH WITHDRAWAL
F1524	OTHER STIMULANT DEPENDENCE WITH STIMULANT-INDUCED MOOD DISORDER
F15250	OTHER STIMULANT DEPENDENCE WITH STIMULANT-INDUCED PSYCHOTIC DISORDER WITH DELUSIONS
F15251	OTHER STIMULANT DEPENDENCE WITH STIMULANT-INDUCED PSYCHOTIC DISORDER WITH HALLUCINATIONS
F15259	OTHER STIMULANT DEPENDENCE WITH STIMULANT-INDUCED PSYCHOTIC DISORDER, UNSPECIFIED
F15280	OTHER STIMULANT DEPENDENCE WITH STIMULANT-INDUCED ANXIETY DISORDER
F15281	OTHER STIMULANT DEPENDENCE WITH STIMULANT-INDUCED SEXUAL DYSFUNCTION
F15282	OTHER STIMULANT DEPENDENCE WITH STIMULANT-INDUCED SLEEP DISORDER
F15288	OTHER STIMULANT DEPENDENCE WITH OTHER STIMULANT-INDUCED DISORDER
F1529	OTHER STIMULANT DEPENDENCE WITH UNSPECIFIED STIMULANT-INDUCED DISORDER
F1590	OTHER STIMULANT USE, UNSPECIFIED, UNCOMPLICATED
F1610	HALLUCINOGEN ABUSE, UNCOMPLICATED
F16120	HALLUCINOGEN ABUSE WITH INTOXICATION, UNCOMPLICATED
F1620	HALLUCINOGEN DEPENDENCE, UNCOMPLICATED
F1621	HALLUCINOGEN DEPENDENCE, IN REMISSION
F16220	HALLUCINOGEN DEPENDENCE WITH INTOXICATION, UNCOMPLICATED
F16221	HALLUCINOGEN DEPENDENCE WITH INTOXICATION WITH DELIRIUM
F16229	HALLUCINOGEN DEPENDENCE WITH INTOXICATION, UNSPECIFIED
F1624	HALLUCINOGEN DEPENDENCE WITH HALLUCINOGEN-INDUCED MOOD DISORDER
F16250	HALLUCINOGEN DEPENDENCE WITH HALLUCINOGEN-INDUCED PSYCHOTIC DISORDER WITH DELUSIONS



<b>Step 3 (diagnosis of alcohol or substance abuse)</b>	
<b>Required diagnosis: 1</b>	
<b>Look back timeframe: 730 days</b>	
<b>ICD-10 Code</b>	<b>Description</b>
F16251	HALLUCINOGEN DEPENDENCE WITH HALLUCINOGEN-INDUCED PSYCHOTIC DISORDER WITH HALLUCINATIONS
F16259	HALLUCINOGEN DEPENDENCE WITH HALLUCINOGEN-INDUCED PSYCHOTIC DISORDER, UNSPECIFIED
F16280	HALLUCINOGEN DEPENDENCE WITH HALLUCINOGEN-INDUCED ANXIETY DISORDER
F16283	HALLUCINOGEN DEPENDENCE WITH HALLUCINOGEN PERSISTING PERCEPTION DISORDER (FLASHBACKS)
F16288	HALLUCINOGEN DEPENDENCE WITH OTHER HALLUCINOGEN-INDUCED DISORDER
F1629	HALLUCINOGEN DEPENDENCE WITH UNSPECIFIED HALLUCINOGEN-INDUCED DISORDER
F1690	HALLUCINOGEN USE, UNSPECIFIED, UNCOMPLICATED
F1810	INHALANT ABUSE, UNCOMPLICATED
F18120	INHALANT ABUSE WITH INTOXICATION, UNCOMPLICATED
F1820	INHALANT DEPENDENCE, UNCOMPLICATED
F1821	INHALANT DEPENDENCE, IN REMISSION
F18220	INHALANT DEPENDENCE WITH INTOXICATION, UNCOMPLICATED
F18221	INHALANT DEPENDENCE WITH INTOXICATION DELIRIUM
F18229	INHALANT DEPENDENCE WITH INTOXICATION, UNSPECIFIED
F1824	INHALANT DEPENDENCE WITH INHALANT-INDUCED MOOD DISORDER
F18250	INHALANT DEPENDENCE WITH INHALANT-INDUCED PSYCHOTIC DISORDER WITH DELUSIONS
F18251	INHALANT DEPENDENCE WITH INHALANT-INDUCED PSYCHOTIC DISORDER WITH HALLUCINATIONS
F18259	INHALANT DEPENDENCE WITH INHALANT-INDUCED PSYCHOTIC DISORDER, UNSPECIFIED
F1827	INHALANT DEPENDENCE WITH INHALANT-INDUCED DEMENTIA
F18280	INHALANT DEPENDENCE WITH INHALANT-INDUCED ANXIETY DISORDER
F18288	INHALANT DEPENDENCE WITH OTHER INHALANT-INDUCED DISORDER
F1829	INHALANT DEPENDENCE WITH UNSPECIFIED INHALANT-INDUCED DISORDER
F1890	INHALANT USE, UNSPECIFIED, UNCOMPLICATED
F1920	OTHER PSYCHOACTIVE SUBSTANCE DEPENDENCE, UNCOMPLICATED
F1921	OTHER PSYCHOACTIVE SUBSTANCE DEPENDENCE, IN REMISSION
F19220	OTHER PSYCHOACTIVE SUBSTANCE DEPENDENCE WITH INTOXICATION, UNCOMPLICATED
F19221	OTHER PSYCHOACTIVE SUBSTANCE DEPENDENCE WITH INTOXICATION DELIRIUM
F19222	OTHER PSYCHOACTIVE SUBSTANCE DEPENDENCE WITH INTOXICATION WITH PERCEPTUAL DISTURBANCE

<b>Step 3 (diagnosis of alcohol or substance abuse)</b>	
<b>Required diagnosis: 1</b>	
<b>Look back timeframe: 730 days</b>	
<b>ICD-10 Code</b>	<b>Description</b>
F19229	OTHER PSYCHOACTIVE SUBSTANCE DEPENDENCE WITH INTOXICATION, UNSPECIFIED
F19230	OTHER PSYCHOACTIVE SUBSTANCE DEPENDENCE WITH WITHDRAWAL, UNCOMPLICATED
F19231	OTHER PSYCHOACTIVE SUBSTANCE DEPENDENCE WITH WITHDRAWAL DELIRIUM
F19232	OTHER PSYCHOACTIVE SUBSTANCE DEPENDENCE WITH WITHDRAWAL WITH PERCEPTUAL DISTURBANCE
F19239	OTHER PSYCHOACTIVE SUBSTANCE DEPENDENCE WITH WITHDRAWAL, UNSPECIFIED
F1924	OTHER PSYCHOACTIVE SUBSTANCE DEPENDENCE WITH PSYCHOACTIVE SUBSTANCE-INDUCED MOOD DISORDER
F19250	OTHER PSYCHOACTIVE SUBSTANCE DEPENDENCE WITH PSYCHOACTIVE SUBSTANCE-INDUCED PSYCHOTIC DISORDER WITH DELUSIONS
F19251	OTHER PSYCHOACTIVE SUBSTANCE DEPENDENCE WITH PSYCHOACTIVE SUBSTANCE-INDUCED PSYCHOTIC DISORDER WITH HALLUCINATIONS
F19259	OTHER PSYCHOACTIVE SUBSTANCE DEPENDENCE WITH PSYCHOACTIVE SUBSTANCE-INDUCED PSYCHOTIC DISORDER, UNSPECIFIED
F1926	OTHER PSYCHOACTIVE SUBSTANCE DEPENDENCE WITH PSYCHOACTIVE SUBSTANCE-INDUCED PERSISTING AMNESTIC DISORDER
F1927	OTHER PSYCHOACTIVE SUBSTANCE DEPENDENCE WITH PSYCHOACTIVE SUBSTANCE-INDUCED PERSISTING DEMENTIA
F19280	OTHER PSYCHOACTIVE SUBSTANCE DEPENDENCE WITH PSYCHOACTIVE SUBSTANCE-INDUCED ANXIETY DISORDER
F19281	OTHER PSYCHOACTIVE SUBSTANCE DEPENDENCE WITH PSYCHOACTIVE SUBSTANCE-INDUCED SEXUAL DYSFUNCTION
F19282	OTHER PSYCHOACTIVE SUBSTANCE DEPENDENCE WITH PSYCHOACTIVE SUBSTANCE-INDUCED SLEEP DISORDER
F19288	OTHER PSYCHOACTIVE SUBSTANCE DEPENDENCE WITH OTHER PSYCHOACTIVE SUBSTANCE-INDUCED DISORDER
F1929	OTHER PSYCHOACTIVE SUBSTANCE DEPENDENCE WITH UNSPECIFIED PSYCHOACTIVE SUBSTANCE-INDUCED DISORDER

<b>Step 4 (active claim for CNS depressant)</b>	
<b>Required quantity: 1</b>	
<b>Look back timeframe: Null</b>	
<b>Label Name</b>	<b>GCN</b>
ALPRAZOLAM 0.25 MG ODT	24368
ALPRAZOLAM 0.25 MG TABLET	14260
ALPRAZOLAM 0.5 MG ODT	24369
ALPRAZOLAM 0.5 MG TABLET	14261
ALPRAZOLAM 1 MG ODT	24373

<b>Step 4 (active claim for CNS depressant)</b>	
<b>Required quantity: 1</b>	
<b>Look back timeframe: Null</b>	
<b>Label Name</b>	<b>GCN</b>
ALPRAZOLAM 1 MG TABLET	14262
ALPRAZOLAM 1 MG/ML ORAL CONC	14264
ALPRAZOLAM 2 MG ODT	24374
ALPRAZOLAM 2 MG TABLET	14263
ALPRAZOLAM ER 0.5 MG TABLET	17423
ALPRAZOLAM ER 1 MG TABLET	17424
ALPRAZOLAM ER 2 MG TABLET	17425
ALPRAZOLAM ER 3 MG TABLET	19681
AMBIEN 5 MG TABLET	00870
AMBIEN 10 MG TABLET	00871
AMBIEN CR 6.25 MG TABLET	25456
AMBIEN CR 12.5 MG TABLET	25457
BELSOMRA 10 MG TABLET	36968
BELSOMRA 15 MG TABLET	36969
BELSOMRA 20 MG TABLET	36971
BELSOMRA 5 MG TABLET	36967
CHLORDIAZEPOXIDE 10 MG CAPSULE	14031
CHLORDIAZEPOXIDE 5 MG CAPSULE	14033
CHLORDIAZEPOXIDE 25 MG CAPSULE	74801
CLONAZEPAM 0.125 MG DIS TAB	19467
CLONAZEPAM 0.5 MG DIS TABLET	19469
CLONAZEPAM 1 MG DIS TABLET	19470
CLONAZEPAM 0.25 MG ODT	19468
CLONAZEPAM 2 MG ODT	19472
CLONAZEPAM 0.5 MG TABLET	17470
CLONAZEPAM 1 MG TABLET	17471
CLONAZEPAM 2 MG TABLET	17472
CLORAZEPATE 3.75 MG TABLET	14092
CLORAZEPATE 7.5 MG TABLET	14093
CLORAZEPATE 15 MG TABLET	14090
DIAZEPAM 5 MG/ML ORAL CONC	45500
DIAZEPAM 5 MG/5 ML SOLUTION	45560
DIAZEPAM 2 MG TABLET	14221
DIAZEPAM 5 MG TABLET	14222
DIAZEPAM 10 MG TABLET	14220
EDLUAR 5 MG SL TABLET	26183

<b>Step 4 (active claim for CNS depressant)</b>	
<b>Required quantity: 1</b>	
<b>Look back timeframe: Null</b>	
<b>Label Name</b>	<b>GCN</b>
EDLUAR 10 MG SL TABLET	26182
ESTAZOLAM 1 MG TABLET	19181
ESTAZOLAM 2 MG TABLET	19182
ESZOPICLONE 1 MG TABLET	23927
ESZOPICLONE 2 MG TABLET	23926
ESZOPICLONE 3 MG TABLET	23925
FLURAZEPAM 15 MG CAPSULE	14250
FLURAZEPAM 30 MG CAPSULE	14251
HETLIOZ 20 MG CAPSULE	36068
INTERMEZZO 1.75 MG TAB SUBLING	31562
KLONOPIN 0.5 MG TABLET	17470
KLONOPIN 1 MG TABLET	17471
KLONOPIN 2 MG TABLET	17472
LORAZEPAM 0.5 MG TABLET	14160
LORAZEPAM 1 MG TABLET	14161
LORAZEPAM 2 MG TABLET	14162
LORAZEPAM 2 MG/ML VIAL	14140
LORAZEPAM INTENSOL 2 MG/ML	19601
LUNESTA 1 MG TABLET	23927
LUNESTA 2 MG TABLET	23926
LUNESTA 3 MG TABLET	23925
MEPROBAMATE 200 MG TABLET	13801
MEPROBAMATE 400 MG TABLET	13802
OXAZEPAM 10 MG CAPSULE	14230
OXAZEPAM 15 MG CAPSULE	14231
OXAZEPAM 30 MG CAPSULE	14232
RAMELTEON 8 MG TABLET	25202
RESTORIL 7.5 MG CAPSULE	13845
RESTORIL 15 MG CAPSULE	13840
RESTORIL 22.5 MG CAPSULE	24036
RESTORIL 30 MG CAPSULE	13841
ROZEREM 8 MG TABLET	25202
TEMAZEPAM 7.5 MG CAPSULE	13845
TEMAZEPAM 15 MG CAPSULE	13840
TEMAZEPAM 22.5 MG CAPSULE	24036
TEMAZEPAM 30 MG CAPSULE	13841

<b>Step 4 (active claim for CNS depressant)</b>	
<b>Required quantity: 1</b>	
<b>Look back timeframe: Null</b>	
<b>Label Name</b>	<b>GCN</b>
TRANXENE T-TAB 7.5 MG	14093
TRIAZOLAM 0.25 MG TABLET	14280
TRIAZOLAM 0.125 MG TABLET	14282
XANAX 0.25 MG TABLET	14260
XANAX 0.5 MG TABLET	14261
XANAX 1 MG TABLET	14262
XANAX 2 MG TABLET	14263
XANAX XR 0.5 MG TABLET	17423
XANAX XR 1 MG TABLET	17424
XANAX XR 2 MG TABLET	17425
XANAX XR 3 MG TABLET	19681
ZALEPLON 5 MG CAPSULE	92713
ZALEPLON 10 MG CAPSULE	92723
ZOLPIDEM TART ER 6.25 MG TAB	25456
ZOLPIDEM TART ER 12.5 MG TAB	25457
ZOLPIDEM TART 1.75 MG TAB SL	31562
ZOLPIDEM TART 3.5 MG TABLET SL	31563
ZOLPIDEM TARTRATE 5 MG TABLET	00870
ZOLPIDEM TARTRATE 10 MG TABLET	00871

<b>Step 6 (diagnosis of narcolepsy or cataplexy)</b>	
<b>Required diagnosis: 1</b>	
<b>Look back timeframe: 730 days</b>	
<b>ICD-10 Code</b>	<b>Description</b>
G47411	NARCOLEPSY WITH CATAPLEXY
G47419	NARCOLEPSY WITHOUT CATAPLEXY
G47421	NARCOLEPSY IN CONDITIONS CLASSIFIED ELSEWHERE WITH CATAPLEXY
G47429	NARCOLEPSY IN CONDITIONS CLASSIFIED ELSEWHERE WITHOUT CATAPLEXY



## Xyrem/Xywav (Oxybate products)

### Clinical Criteria References

1. 2020 ICD-10-CM Diagnosis Codes. 2020. Available at [www.icd10data.com](http://www.icd10data.com). Accessed on October 23, 2020.
2. Clinical Pharmacology [online database]. Tampa, FL: Elsevier/Gold Standard, Inc.; 2020. Available at [www.clinicalpharmacology.com](http://www.clinicalpharmacology.com). Accessed on October 23, 2020.
3. Micromedex [online database]. Available at [www.micromedexsolutions.com](http://www.micromedexsolutions.com). Accessed on October 23, 2020.
4. Xywav Prescribing Information. Palo Alto, CA. Jazz Pharmaceuticals. July 2020.
5. Xyrem Prescribing Information. Palo Alto, CA. Jazz Pharmaceuticals. October 2018.
6. Krahn LE, Hershner S, Loeding LD, et al. Quality Measures for the Care of Patients with Narcolepsy. *Journal of Clinical Sleep Medicine* 2015;11(3):335-55.

## Publication History

The Publication History records the publication iterations and revisions to this document. Notes for the *most current revision* are also provided in the **Revision Notes** on the first page of this document.

Publication Date	Notes
03/09/2011	Initial publication and posting to website
10/26/2011	<ul style="list-style-type: none"> <li>Added a new section to specify the drugs requiring prior authorization</li> <li>Modified criteria logic and logic diagram to identify the steps that are executed manually</li> <li>In the "Clinical Edit Criteria Supporting Tables" section, revised tables to specify the drug names and GCNs pertinent to steps 3 and 5 of the logic diagram</li> <li>In the "Clinical Edit Criteria Supporting Tables" section, revised tables to specify the diagnosis codes pertinent to steps 4 and 7 of the logic diagram</li> </ul>
04/03/2015	<ul style="list-style-type: none"> <li>Updated to include ICD-10s</li> </ul>
04/12/2018	<ul style="list-style-type: none"> <li>Annual review by staff</li> <li>Removed ICD-9 codes</li> <li>Updated logic and logic diagram, pages 3-4</li> <li>Updated Table 3, page 11-22</li> </ul>
12/27/2018	<ul style="list-style-type: none"> <li>Updated step 1 of logic diagram, page 4. Yes = deny; No = go to #2</li> </ul>
01/21/2019	<ul style="list-style-type: none"> <li>Updated age question in criteria logic and logic diagram to reflect new labeling (less than 7 years of age, deny)</li> <li>Updated GCNs in Table 3, pages 11-22</li> <li>Updated References, page 23</li> </ul>
03/29/2019	<ul style="list-style-type: none"> <li>Updated to include formulary statement (The listed GCNS may not be an indication of TX Medicaid Formulary coverage. To learn the current formulary coverage, visit <a href="http://TxVendorDrug.com/formulary/formulary-search">TxVendorDrug.com/formulary/formulary-search</a>.) on each 'Drug Requiring PA' table</li> </ul>
09/20/2020	<ul style="list-style-type: none"> <li>Added question for prescribed by, or in consultation with, a specialist to criteria logic and logic diagram</li> </ul>
10/28/2020	<ul style="list-style-type: none"> <li>Added Xywav criteria as approved by the DUR Board</li> </ul>