

Texas Prior Authorization Program Clinical Criteria

Drug/Drug Class

Orilissa (Elagolix)

Clinical Information Included in this Document

- **Drugs requiring prior authorization:** the list of drugs requiring prior authorization for this clinical criteria
- **Prior authorization criteria logic:** a description of how the prior authorization request will be evaluated against the clinical criteria rules
- **Logic diagram:** a visual depiction of the clinical criteria logic
- **Supporting tables:** a collection of information associated with the steps within the criteria (diagnosis codes, procedure codes, and therapy codes); provided when applicable
- **References:** clinical publications and sources relevant to this clinical criteria

Note: Click the hyperlink to navigate directly to that section.

Revision Notes

Updated to include formulary statement (The listed GCNS may not be an indication of TX Medicaid Formulary coverage. To learn the current formulary coverage, visit TxVendorDrug.com/formulary/formulary-search.) on each 'Drug Requiring PA' table



Orilissa (Elagolix)

Drugs Requiring Prior Authorization

The listed GCNS may not be an indication of TX Medicaid Formulary coverage. To learn the current formulary coverage, visit TxVendorDrug.com/formulary/formulary-search.

Drugs Requiring Prior Authorization	
Label Name	GCN
ORILISSA 150 MG TABLET	45026
ORILISSA 200 MG TABLET	45028



Orilissa (Elagolix)

Clinical Criteria Logic

1. Is the client greater than or equal to (\geq) 18 years of age?
 Yes (Go to #2)
 No (Deny)
2. Does the client have a **diagnosis of endometriosis** in the last 730 days?
 Yes (Go to #3)
 No (Deny)
3. Does the client have 1 claim for an **NSAID** and 1 claim for an **oral contraceptive** in the last 180 days?
 Yes (Go to #4)
 No (Deny)
4. Does the client have a **diagnosis of osteoporosis** in the last 365 days?
 Yes (Deny)
 No (Go to #5)
5. Does the client have 1 claim for a **strong OATP-1B1 inhibitor** in the last 90 days?
 Yes (Deny)
 No (Go to #6)
6. Does the client have a diagnosis of severe hepatic impairment (Child-Pugh class C) in the last 365 days? [Manual]
 Yes (Deny)
 No (Go to #7)
7. Is the dose per day less than or equal to (\leq) 150mg daily?
 Yes (Go to #8)
 No (Go to #11)
8. Does the client have a diagnosis of moderate hepatic impairment (Child-Pugh class B) in the last 365 days? [Manual]
 Yes (Go to #9)
 No (Go to #10)
9. Has the client had more than ($>$) 180 days of elagolix therapy in the last 730 days?
 Yes (Deny)
 No (Approve – 180 days)

10. Has the client had less than (<) 730 days of elagolix therapy in the last 730 days?

Yes (Approve - 180 days)

No (Deny)

11. Is the requested dose less than or equal to (\leq) 400mg daily (dosed as 200mg twice daily)?

Yes (Go to #12)

No (Deny)

12. Does the client have a diagnosis of moderate hepatic impairment (Child-Pugh class B) in the last 365 days? [Manual]

Yes (Deny)

No (Go to #13)

13. Has the client had more than (>) 180 days of elagolix therapy in the last 730 days?

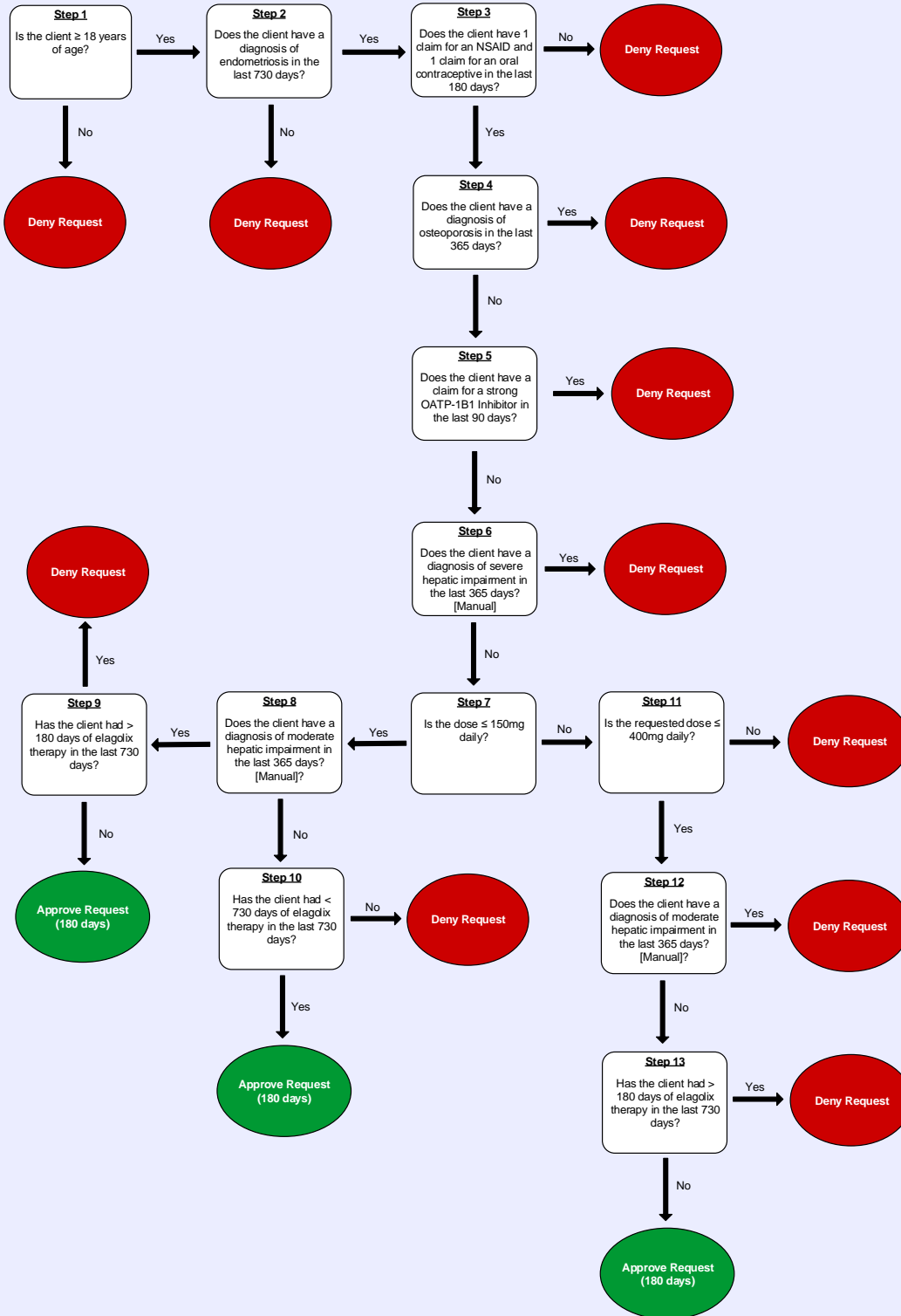
Yes (Deny)

No (Approve - 180 days)



Orilissa (Elagolix)

Clinical Criteria Logic Diagram





Orilissa (Elagolix)

Clinical Criteria Supporting Tables

Step 2 (diagnosis of endometriosis)	
Required diagnosis: 1	
Look back timeframe: 730 days	
ICD-10 Code	Description
N800	ENDOMETRIOSIS OF UTERUS
N801	ENDOMETRIOSIS OF OVARY
N802	ENDOMETRIOSIS OF FALLOPIAN TUBE
N803	ENDOMETRIOSIS OF PELVIC PERITONEUM
N804	ENDOMETRIOSIS OF RECTOVAGINAL SEPTUM AND VAGINA
N805	ENDOMETRIOSIS OF INTESTINE
N806	ENDOMETRIOSIS IN CUTANEOUS SCAR
N808	OTHER ENDOMETRIOSIS
N809	ENDOMETRIOSIS, UNSPECIFIED

Step 3a (claim for an NSAID)	
Required claims: 1	
Look back timeframe: 180 days	
Label Name	GCN
ANAPROX DS 550 MG TABLET	47131
ARTHROTEC 50 MG-200 MCG TAB	62729
ARTHROTEC 75 MG-200 MCG TAB	06263
DAYPRO 600MG CAPLET	01750
DICLOFENAC POT 50 MG TABLET	13960
DICLOFENAC SOD EC 25 MG TAB	35850
DICLOFENAC SOD EC 50 MG TAB	35851
DICLOFENAC SOD EC 75 MG TAB	35852
DICLOFENAC SOD ER 100 MG TAB	13310
DICLOFENAC-MISOPROST 50-200 TB	62729
DICLOFENAC-MISOPROST 75-0.2 TB	6263
DIFLUNISAL 500MG TABLET	16851
DUEXIS 800-26.6MG TABLET	30547
ETODOLAC 200 MG CAPSULE	33870
ETODOLAC 300 MG CAPSULE	33871
ETODOLAC 400 MG TABLET	61761

Step 3a (claim for an NSAID)	
Required claims: 1	
Look back timeframe: 180 days	
Label Name	GCN
ETODOLAC 500 MG TABLET	61766
ETODOLAC ER 400 MG TABLET	61765
ETODOLAC ER 500 MG TABLET	61767
ETODOLAC ER 600 MG TABLET	61762
FELDENE 10MG CAPSULE	35820
FELDENE 20MG CAPSULE	35821
FENOPROFEN 600MG TABLET	35760
FENOPROFEN CALCIUM 400 MG CAP	27999
FLURBIPROFEN 100MG TABLET	35711
FLURBIPROFEN 50MG TABLET	35710
HYDROCODONE-IBUPROFEN 10-200MG TABLET	99371
HYDROCODONE-IBUPROFEN 5-200MG TABLET	22678
HYDROCODONE-IBUPROFEN 7.5-200MG TABLET	63101
IBUDONE 10-200 MG TABLET	99371
IBUDONE 5-200MG TABLET	22678
IBUPROFEN 200 MG TABLET	35743
IBUPROFEN 400 MG TABLET	35741
IBUPROFEN 600 MG TABLET	35742
IBUPROFEN 800 MG TABLET	35744
INDOCIN 50 MG SUPPOSITORY	20240
INDOMETHACIN 25MG CAPSULE	35680
INDOMETHACIN 50MG CAPSULE	35681
INDOMETHACIN ER 75MG CAPSULE	35690
KETOPROFEN 50MG CAPSULE	34420
KETOPROFEN 75MG CAPSULE	34421
KETOPROFEN ER 200MG CAPSULE	33792
KETOROLAC 10MG TABLET	32531
KETOROLAC 15MG/ML VIAL	35238
KETOROLAC 30MG/ML VIAL	35239
KETOROLAC 60MG/2ML VIAL	35236
LODINE 400MG TABLET	61761
MECLOFENAMATE 100 MG CAPSULE	35810
MECLOFENAMATE 50 MG CAPSULE	35811
MEFENAMIC ACID 250MG CAPSULE	16530
NABUMETONE 500MG TABLET	32961
NABUMETONE 750MG TABLET	32962
NALFON 400MG CAPSULE	27999
NAPROSYN 250MG TABLET	35790

Step 3a (claim for an NSAID)	
Required claims: 1	
Look back timeframe: 180 days	
Label Name	GCN
NAPROSYN 375MG TABLET	35792
NAPROSYN EC 500MG TABLET	61851
NAPROXEN 250 MG TABLET	35790
NAPROXEN 375 MG TABLET	35792
NAPROXEN 500 MG TABLET	35793
NAPROXEN DR 375 MG TABLET	61850
NAPROXEN DR 500 MG TABLET	61851
NAPROXEN SOD 220 MG TABLET	47132
NAPROXEN SOD ER 500 MG TABLET	92253
NAPROXEN SODIUM 275 MG TAB	47130
NAPROXEN SODIUM 550 MG TAB	47131
OXAPROZIN 600MG TABLET	01750
OXYCODONE-IBUPROFEN 5-400MG TABLET	23827
PIROXICAM 10MG CAPSULE	35820
PIROXICAM 20MG CAPSULE	35821
PONSTEL 250MG KAPSEALS	16530
QC IBUPROFEN 200 MG SOFTGEL	35431
SPRIX 15.75MG NASAL SPRAY	29928
SULINDAC 150MG TABLET	35800
SULINDAC 200MG TABLET	35801
SUMATRIPTAN-NAPROXEN 85-500 MG	99597
TOLMETIN SODIUM 200MG TABLET	35780
TOLMETIN SODIUM 400MG CAPSULE	35770
TOLMETIN SODIUM 600MG TABLET	35781
TREXIMET 85-500 MG TABLET	99597
VIMOVO DR 375-20 MG TABLET	28572
VIMOVO DR 500-20 MG TABLET	28570
VOLTAREN-XR 100 MG TABLET SA	13310
ZORVOLEX 18MG CAPSULE	35499
ZORVOLEX 35MG CAPSULE	35503

Step 3b (claim for an oral contraceptive)	
Required claims: 1	
Look back timeframe: 180 days	
Label Name	GCN
ALTAVERA-28 TABLET	11530
ALYACEN 1-35 28 TABLET	11474

Step 3b (claim for an oral contraceptive)	
Required claims: 1	
Look back timeframe: 180 days	
Label Name	GCN
ALYACEN 7-7-7-28 TABLET	11477
AMETHIA 0.15-0.03-0.01 MG TABLET	27096
AMETHIA LO TABLET	18167
AMETHYST 90-20 MCG TABLET	98551
APRI 28 DAY TABLET	68811
ARANELLE 28 TABLET	11478
ASHLYNA 0.15-0.03-0.01 MG TAB	27096
AUBRA-28 TABLET	11534
AVIANE-28 TABLET	11534
AZURETTE 28 DAY TABLET	94868
BALCOLTRA TABLET	44336
BALZIVA 28 TABLET	11470
BEKYREE 28 DAY TABLET	94868
BEYAZ 28 TABLET	29095
BLISOVI 24 FE TABLET	26629
BLISOVI FE 1.5-30 TABLET	68101
BLISOVI FE 1-20 TABLET	68102
BRIELLYN TABLET	11470
CAMRESE 0.15-0.03-0.01 MG TAB	27096
CAMRESE LO TABLET	18167
CAZIAN 28 DAY TABLET	13094
CHATEAL-28 TABLET	11530
CRYSSELLE-28 TABLET	11500
CYCLAFEM 1-35-28 TABLET	11474
CYCLAFEM 7-7-7-28 TABLET	11477
CYCLESSA 28 DAY TABLET	13094
DASETTA 1-35-28 TABLET	11474
DASETTA 7/7/7-28 TABLET	1477
DAYSEE 0.15-0.03-0.01 MG TAB	27096
DESOGEST-ETH ESTRA 0.15-0.03 MG	68811
DESOGESTR-ETH ESTRAD ETH ESTRA	94868
DROSP-EE-LEVOMEF 3-0.02-0.451	29095
DROSP-EE-LEVOMEF 3-0.03-0.451	29382
DROSPIRENONE-EE 3-0.02 MG TAB	26767
DROSPIRENONE-EE 3-0.03 MG TAB	13083
ELINEST-28 TABLET	11500
EMOQUETTE 28 DAY TABLET	68811
ENPRESSE-28 TABLET	11531

Step 3b (claim for an oral contraceptive)	
Required claims: 1	
Look back timeframe: 180 days	
Label Name	GCN
ENSKYCE 28 DAY TABLET	68811
ESTARYLLA 0.25-0.035 MG TABLET	11300
ESTROSTEP FE-28 TABLET	68105
FALMINA-28 TABLET	11534
FAYOSIM TABLET	34465
FEMYNOR 28 TABLET	11300
GENERESS FE CHEWABLE TABLET	29719
GIANVI 3 MG-0.02 MG TABLET	26737
INTROVALE 0.15-0.03 MG TABLET	20414
ISIBLOOM 28 DAY TABLET	68811
JOLESSA 0.15-0.03 MG TABLET	20414
JULEBER 28 DAY TABLET	68811
JUNEL 1 MG-20 MCG TABLET	11481
JUNEL 1.5 MG-30 MCG TABLET	11480
JUNEL FE 1 MG-20 MCG TABLET	68102
JUNEL FE 1.5 MG-30 MCG TABLET	68101
JUNEL FE 24 TABLET	26629
KAITLIB FE CHEWABLE TABLET	29719
KARIVA 28 DAY TABLET	94868
KELNOR 1-35 28 TABLET	11490
KELNOR 1-50 TABLET	11491
KIMIDESS 28 DAY TABLET	94868
KURVELO TABLET	11530
LARIN 1.5 MG-30 MCG TABLET	11480
LARIN 21 1-20 TABLET	11481
LARIN 24 FE 1 MG-20 MCG TABLET	26629
LARIN FE 1.5-30 TABLET	68101
LARIN FE 1-20 TABLET	68102
LARISSIA-28 TABLET	11534
LAYOLIS FE CHEWABLE TABLET	29719
LEENA 28 TABLET	11478
LESSINA-28 TABLET	11534
LEVONEST-28 TABLET	11531
LEVONO-E ESTRAD 0.10-0.002-0.01	18167
LEVONOR-ETH ESTRA 0.09-0.02 MG	98551
LEVONOR-ETH ESTRAD 0.15-0.03	11530
LEVONOR-ETH ESTRAD 0.15-0.03	20414
LEVONOR-ETH ESTRAD TRIPHASIC	11531

Step 3b (claim for an oral contraceptive)	
Required claims: 1	
Look back timeframe: 180 days	
Label Name	GCN
LEVONORG 0.15MG-EE 20-25-30MCG	34465
LEVORA-28 TABLET	11530
LILLOW-28 TABLET	11530
LO LOESTRIN FE 1-10 TABLET	29264
LOESTRIN 21 1.5-30 TABLET	11480
LOESTRIN 21 1-20 TABLET	11481
LOESTRIN FE 1.5-30 TABLET	68101
LOESTRIN FE 1-20 TABLET	68102
LORYNA 3 MG-0.02 MG TABLET	26737
LOSEASONIQUE TABLET	18167
LOVORNOR-ETH ESTRAD 0.1-0.02 MG	11534
LOW-OGESTREL-28 TABLET	11500
LUTERA-28 TABLET	11534
MARLISSA-28 TABLET	11530
MELODETTA 24 FE CHEWABLE TAB	34725
MIBELAS 24 FE CHEWABLE TABLET	34725
MICROGESTIN 21 1.5-30 TABLET	11480
MICROGESTIN 21 1-20 MG	11481
MICROGESTIN FE 1.5-30 TAB	68101
MICROGESTIN FE 1-20 TABLET	68102
MILI 0.25-0.035 MG TABLET	11300
MINASTRIN 24 FE CHEWABLE TABLET	34725
MONO-LINYAH 28 TABLET	11300
MONONESSA 28 TABLET	11300
MYZILRA-28 TABLET	11531
NATAZIA 28 TABLET	23497
NECON 0.5-35-28 TABLET	11471
NECON 7-7-7-28 TABLET	11477
NIKKI 3 MG-0.02 MG TABLET	26737
NORET-ESTR-FE 0.4-0.035-75	97167
NORETH-ESTRAD-FE 1-0.02-75	26629
NORETH-ESTRAD-FE 1-0.02-75	68102
NORETH-ESTRAD-FE 1-0.02-75	34725
NORETHIND-ETH ESTRAD 1-0.02 MG	11481
NORETHIN-ESTRA-FE 0.8-0.025 MG	29719
NORG-EE 0.18-0.215-0.25/0.025	18126
NORG-EE 0.18-0.215-0.25/0.035	11301
NORG-ETHIN-ESTRA 0.25-0.035 MG	11300

Step 3b (claim for an oral contraceptive)	
Required claims: 1	
Look back timeframe: 180 days	
Label Name	GCN
NORTREL 0.5-35-28 TABLET	11471
NORTREL 1-35 TABLET	11474
NORTREL 7-7-7-28 TABLET	11477
OCELLA 3 MG-0.03 MG TABLET	13083
OGESTREL TABLET	11501
ORSYTHIA-28 TABLET	11534
ORTHO TRI-CYCLEN 28 TABLET	11301
ORTHO TRI-CYCLEN LO TABLET	18126
ORTHO-CYCLEN 28 TABLET	11300
ORTHO-NOVUM 1-35-28 TABLET	11474
ORTHO-NOVUM 7-7-7-28 TABLET	11477
PHILITH 0.4-0.035 MG TABLET	11470
PIMTREA 28 DAY TABLET	94868
PIRMELLA 1-35-28 TABLET	11474
PIRMELLA 7-7-7-28 TABLET	11477
PORTIA-28 TABLET	11530
PREVIFEM TABLET	11300
QUARTETTE TABLET	34465
QUASENSE 0.15-0.03 MG TABLET	20414
RAJANI 28 TABLET	29095
RECLIPSEN 28 DAY TABLET	68811
RIVELSA TABLET	34465
SAFYRAL TABLET	29382
SEASONIQUE 0.15-0.03-0.01 TAB	27096
SETLAKIN 0.15-0.03 MG TABLET	20414
SPRINTEC 28 DAY DABLET	11300
SRONYX 0.10-0.02 MG TABLET	11534
SYEDA 28 TABLET	13083
TARINA FE 1-20 TABLET	68102
TAYTULLA 1 MG-20 MCG CAPSULE	34576
TILIA FE 28 TABLET	68105
TRI FEMYNOR 28 TABLET	11301
TRI-ESTARYLLA TABLET	11301
TRI-LEGEST FE-28 DAY TABLET	68105
TRI-LINYAH TABLET	11301
TRI-LO-ESTARYLLA	18126
TRI-LO-MARZIA TABLET	18126
TRI-LO-SPRINTEC TABLET	18126

Step 3b (claim for an oral contraceptive)	
Required claims: 1	
Look back timeframe: 180 days	
Label Name	GCN
TRINESSA LO TABLET	18126
TRINESSA TABLET	11301
TRI-NORINYL 28 TABLET	11478
TRI-PREVIFEM TABLET	11301
TRI-SPRINTEC TABLET	11301
TRIVORA-28 TABLET	11531
TYDEMY TABLET	29382
VELIVET 28 DAY TABLET	1094
VESTURA 3 MG-0.02 MG TABLET	26737
VIENVA-28 TABLET	11534
VIORELE 28 DAY TABLET	94868
VYFEMLA 28 TABLET	11470
WERA 0.5/0.035 MG 28 TABLET	11471
WYMZYA FE CHEWABLE TABLET	97167
YASMIN 28 TABLET	13083
YAZ 28 TABLET	26737
ZARAH TABLET	13083
ZENCHENT 0.4 MG-35 MCG TABLET	11470
ZOVIA 1-35E TABLET	11490
ZOVIA 1-50E TABLET	11491

Step 4 (diagnosis of osteoporosis)	
Required diagnosis: 1	
Look back timeframe: 365 days	
ICD-10 Code	Description
M8000XA	AGE-RELATED OSTEOPOROSIS WITH CURRENT PATHOLOGICAL FRACTURE, UNSPECIFIED SITE INITIAL ENCOUNTER FOR FRACTURE
M8000XD	AGE-RELATED OSTEOPOROSIS WITH CURRENT PATHOLOGICAL FRACTURE, UNSPECIFIED SITE SUBSEQUENT ENCOUNTER FOR FRACTURE WITH ROUTINE HEALING
M8000XG	AGE-RELATED OSTEOPOROSIS WITH CURRENT PATHOLOGICAL FRACTURE, UNSPECIFIED SITE
M8000XK	AGE-RELATED OSTEOPOROSIS WITH CURRENT PATHOLOGICAL FRACTURE, UNSPECIFIED SITE
M8000XP	AGE-RELATED OSTEOPOROSIS WITH CURRENT PATHOLOGICAL FRACTURE, UNSPECIFIED SITE
M8000XS	AGE-RELATED OSTEOPOROSIS WITH CURRENT PATHOLOGICAL FRACTURE, UNSPECIFIED SITE

Step 4 (diagnosis of osteoporosis)	
Required diagnosis: 1	
Look back timeframe: 365 days	
ICD-10 Code	Description
M8011A	AGE-RELATED OSTEOPOROSIS WITH CURRENT PATHOLOGICAL FRACTURE, RIGHT SHOULDER INITIAL ENCOUNTER FOR FRACTURE
M8011D	AGE-RELATED OSTEOPOROSIS WITH CURRENT PATHOLOGICAL FRACTURE, RIGHT SHOULDER SUBSEQUENT ENCOUNTER FOR FRACTURE WITH ROUTINE HEALING
M8011G	AGE-RELATED OSTEOPOROSIS WITH CURRENT PATHOLOGICAL FRACTURE, RIGHT SHOULDER SUBSEQUENT ENCOUNTER FOR FRACTURE WITH DELAYED HEALING
M8011K	AGE-RELATED OSTEOPOROSIS WITH CURRENT PATHOLOGICAL FRACTURE, RIGHT SHOULDER SUBSEQUENT ENCOUNTER FOR FRACTURE WITH NONUNION
M8011P	AGE-RELATED OSTEOPOROSIS WITH CURRENT PATHOLOGICAL FRACTURE, RIGHT SHOULDER SUBSEQUENT ENCOUNTER FOR FRACTURE WITH MALUNION
M8011S	AGE-RELATED OSTEOPOROSIS WITH CURRENT PATHOLOGICAL FRACTURE, RIGHT SHOULDER SEQUELA
M80012A	AGE-RELATED OSTEOPOROSIS WITH CURRENT PATHOLOGICAL FRACTURE, LEFT SHOULDER INITIAL ENCOUNTER FOR FRACTURE
M80012D	AGE-RELATED OSTEOPOROSIS WITH CURRENT PATHOLOGICAL FRACTURE, LEFT SHOULDER SUBSEQUENT ENCOUNTER FOR FRACTURE WITH ROUTINE HEALING
M80012G	AGE-RELATED OSTEOPOROSIS WITH CURRENT PATHOLOGICAL FRACTURE, LEFT SHOULDER SUBSEQUENT ENCOUNTER FOR FRACTURE WITH DELAYED HEALING
M80012K	AGE-RELATED OSTEOPOROSIS WITH CURRENT PATHOLOGICAL FRACTURE, LEFT SHOULDER SUBSEQUENT ENCOUNTER FOR FRACTURE WITH NONUNION
M80012P	AGE-RELATED OSTEOPOROSIS WITH CURRENT PATHOLOGICAL FRACTURE, LEFT SHOULDER SUBSEQUENT ENCOUNTER FOR FRACTURE WITH MALUNION
M80012S	AGE-RELATED OSTEOPOROSIS WITH CURRENT PATHOLOGICAL FRACTURE, LEFT SHOULDER SEQUELA
M80019A	AGE-RELATED OSTEOPOROSIS WITH CURRENT PATHOLOGICAL FRACTURE, UNSPECIFIED SHOULDER INITIAL ENCOUNTER FOR FRACTURE
M80019D	AGE-RELATED OSTEOPOROSIS WITH CURRENT PATHOLOGICAL FRACTURE, UNSPECIFIED SHOULDER SUBSEQUENT ENCOUNTER FOR FRACTURE WITH ROUTINE HEALING
M80019G	AGE-RELATED OSTEOPOROSIS WITH CURRENT PATHOLOGICAL FRACTURE, UNSPECIFIED SHOULDER SUBSEQUENT ENCOUNTER FOR FRACTURE WITH DELAYED HEALING
M80019K	AGE-RELATED OSTEOPOROSIS WITH CURRENT PATHOLOGICAL FRACTURE, UNSPECIFIED SHOULDER SUBSEQUENT ENCOUNTER FOR FRACTURE WITH NONUNION

Step 4 (diagnosis of osteoporosis)	
Required diagnosis: 1	
Look back timeframe: 365 days	
ICD-10 Code	Description
M80019P	AGE-RELATED OSTEOPOROSIS WITH CURRENT PATHOLOGICAL FRACTURE, UNSPECIFIED SHOULDER SUBSEQUENT ENCOUNTER FOR FRACTURE WITH MALUNION
M80019S	AGE-RELATED OSTEOPOROSIS WITH CURRENT PATHOLOGICAL FRACTURE, UNSPECIFIED SHOULDER SEQUELA
M80021A	AGE-RELATED OSTEOPOROSIS WITH CURRENT PATHOLOGICAL FRACTURE, RIGHT HUMERUS INITIAL ENCOUNTER FOR FRACTURE
M80021D	AGE-RELATED OSTEOPOROSIS WITH CURRENT PATHOLOGICAL FRACTURE, RIGHT HUMERUS SUBSEQUENT ENCOUNTER FOR FRACTURE WITH ROUTINE HEALING
M80021G	AGE-RELATED OSTEOPOROSIS WITH CURRENT PATHOLOGICAL FRACTURE, RIGHT HUMERUS SUBSEQUENT ENCOUNTER FOR FRACTURE WITH DELAYED HEALING
M80021K	AGE-RELATED OSTEOPOROSIS WITH CURRENT PATHOLOGICAL FRACTURE, RIGHT HUMERUS SUBSEQUENT ENCOUNTER FOR FRACTURE WITH NONUNION
M80021P	AGE-RELATED OSTEOPOROSIS WITH CURRENT PATHOLOGICAL FRACTURE, RIGHT HUMERUS SUBSEQUENT ENCOUNTER FOR FRACTURE WITH MALUNION
M80021S	AGE-RELATED OSTEOPOROSIS WITH CURRENT PATHOLOGICAL FRACTURE, RIGHT HUMERUS SEQUELA
M80022A	AGE-RELATED OSTEOPOROSIS WITH CURRENT PATHOLOGICAL FRACTURE, LEFT HUMERUS INITIAL ENCOUNTER FOR FRACTURE
M80021D	AGE-RELATED OSTEOPOROSIS WITH CURRENT PATHOLOGICAL FRACTURE, LEFT HUMERUS SUBSEQUENT ENCOUNTER FOR FRACTURE WITH ROUTINE HEALING
M80022G	AGE-RELATED OSTEOPOROSIS WITH CURRENT PATHOLOGICAL FRACTURE, LEFT HUMERUS SUBSEQUENT ENCOUNTER FOR FRACTURE WITH DELAYED HEALING
M80022K	AGE-RELATED OSTEOPOROSIS WITH CURRENT PATHOLOGICAL FRACTURE, LEFT HUMERUS SUBSEQUENT ENCOUNTER FOR FRACTURE WITH NONUNION
M80022P	AGE-RELATED OSTEOPOROSIS WITH CURRENT PATHOLOGICAL FRACTURE, LEFT HUMERUS SUBSEQUENT ENCOUNTER FOR FRACTURE WITH MALUNION
M80022S	AGE-RELATED OSTEOPOROSIS WITH CURRENT PATHOLOGICAL FRACTURE, LEFT HUMERUS SEQUELA
M80029A	AGE-RELATED OSTEOPOROSIS WITH CURRENT PATHOLOGICAL FRACTURE, UNSPECIFIED HUMERUS INITIAL ENCOUNTER FOR FRACTURE
M80029D	AGE-RELATED OSTEOPOROSIS WITH CURRENT PATHOLOGICAL FRACTURE, UNSPECIFIED HUMERUS SUBSEQUENT ENCOUNTER FOR FRACTURE WITH ROUTINE HEALING

Step 4 (diagnosis of osteoporosis)	
Required diagnosis: 1	
Look back timeframe: 365 days	
ICD-10 Code	Description
M80029G	AGE-RELATED OSTEOPOROSIS WITH CURRENT PATHOLOGICAL FRACTURE, UNSPECIFIED HUMERUS SUBSEQUENT ENCOUNTER FOR FRACTURE WITH DELAYED HEALING
M80029K	AGE-RELATED OSTEOPOROSIS WITH CURRENT PATHOLOGICAL FRACTURE, UNSPECIFIED HUMERUS SUBSEQUENT ENCOUNTER FOR FRACTURE WITH NONUNION
M80029P	AGE-RELATED OSTEOPOROSIS WITH CURRENT PATHOLOGICAL FRACTURE, UNSPECIFIED HUMERUS SUBSEQUENT ENCOUNTER FOR FRACTURE WITH MALUNION
M80029S	AGE-RELATED OSTEOPOROSIS WITH CURRENT PATHOLOGICAL FRACTURE, UNSPECIFIED HUMERUS SEQUELA
M80031A	AGE-RELATED OSTEOPOROSIS WITH CURRENT PATHOLOGICAL FRACTURE, RIGHT FOREARM INITIAL ENCOUNTER FOR FRACTURE
M80031D	AGE-RELATED OSTEOPOROSIS WITH CURRENT PATHOLOGICAL FRACTURE, RIGHT FOREARM SUBSEQUENT ENCOUNTER FOR FRACTURE WITH ROUTINE HEALING
M80031G	AGE-RELATED OSTEOPOROSIS WITH CURRENT PATHOLOGICAL FRACTURE, RIGHT FOREARM SUBSEQUENT ENCOUNTER FOR FRACTURE WITH DELAYED HEALING
M80031K	AGE-RELATED OSTEOPOROSIS WITH CURRENT PATHOLOGICAL FRACTURE, RIGHT FOREARM SUBSEQUENT ENCOUNTER FOR FRACTURE WITH NONUNION
M80031P	AGE-RELATED OSTEOPOROSIS WITH CURRENT PATHOLOGICAL FRACTURE, RIGHT FOREARM SUBSEQUENT ENCOUNTER FOR FRACTURE WITH MALUNION
M80031S	AGE-RELATED OSTEOPOROSIS WITH CURRENT PATHOLOGICAL FRACTURE, RIGHT FOREARM SEQUELA
M80032A	AGE-RELATED OSTEOPOROSIS WITH CURRENT PATHOLOGICAL FRACTURE, LEFT FOREARM INITIAL ENCOUNTER FOR FRACTURE
M80032D	AGE-RELATED OSTEOPOROSIS WITH CURRENT PATHOLOGICAL FRACTURE, LEFT FOREARM SUBSEQUENT ENCOUNTER FOR FRACTURE WITH ROUTINE HEALING
M80032G	AGE-RELATED OSTEOPOROSIS WITH CURRENT PATHOLOGICAL FRACTURE, LEFT FOREARM SUBSEQUENT ENCOUNTER FOR FRACTURE WITH DELAYED HEALING
M80032K	AGE-RELATED OSTEOPOROSIS WITH CURRENT PATHOLOGICAL FRACTURE, LEFT FOREARM SUBSEQUENT ENCOUNTER FOR FRACTURE WITH NONUNION
M80032P	AGE-RELATED OSTEOPOROSIS WITH CURRENT PATHOLOGICAL FRACTURE, LEFT FOREARM SUBSEQUENT ENCOUNTER FOR FRACTURE WITH MALUNION
M80032S	AGE-RELATED OSTEOPOROSIS WITH CURRENT PATHOLOGICAL FRACTURE, LEFT FOREARM SEQUELA

Step 4 (diagnosis of osteoporosis)	
Required diagnosis: 1	
Look back timeframe: 365 days	
ICD-10 Code	Description
M80039A	AGE-RELATED OSTEOPOROSIS WITH CURRENT PATHOLOGICAL FRACTURE, UNSPECIFIED FOREARM INITIAL ENCOUNTER FOR FRACTURE
M80039D	AGE-RELATED OSTEOPOROSIS WITH CURRENT PATHOLOGICAL FRACTURE, UNSPECIFIED FOREARM SUBSEQUENT ENCOUNTER FOR FRACTURE WITH ROUTINE HEALING
M80039G	AGE-RELATED OSTEOPOROSIS WITH CURRENT PATHOLOGICAL FRACTURE, UNSPECIFIED FOREARM SUBSEQUENT ENCOUNTER FOR FRACTURE WITH DELAYED HEALING
M80039K	AGE-RELATED OSTEOPOROSIS WITH CURRENT PATHOLOGICAL FRACTURE, UNSPECIFIED FOREARM SUBSEQUENT ENCOUNTER FOR FRACTURE WITH NONUNION
M80039P	AGE-RELATED OSTEOPOROSIS WITH CURRENT PATHOLOGICAL FRACTURE, UNSPECIFIED FOREARM SUBSEQUENT ENCOUNTER FOR FRACTURE WITH MALUNION
M80039S	AGE-RELATED OSTEOPOROSIS WITH CURRENT PATHOLOGICAL FRACTURE, UNSPECIFIED FOREARM SEQUELA
M80041A	AGE-RELATED OSTEOPOROSIS WITH CURRENT PATHOLOGICAL FRACTURE, RIGHT HAND INITIAL ENCOUNTER FOR FRACTURE
M80041D	AGE-RELATED OSTEOPOROSIS WITH CURRENT PATHOLOGICAL FRACTURE, RIGHT HAND SUBSEQUENT ENCOUNTER FOR FRACTURE WITH ROUTINE HEALING
M80041G	AGE-RELATED OSTEOPOROSIS WITH CURRENT PATHOLOGICAL FRACTURE, RIGHT HAND SUBSEQUENT ENCOUNTER FOR FRACTURE WITH DELAYED HEALING
M80041K	AGE-RELATED OSTEOPOROSIS WITH CURRENT PATHOLOGICAL FRACTURE, RIGHT HAND SUBSEQUENT ENCOUNTER FOR FRACTURE WITH NONUNION
M80041P	AGE-RELATED OSTEOPOROSIS WITH CURRENT PATHOLOGICAL FRACTURE, RIGHT HAND SUBSEQUENT ENCOUNTER FOR FRACTURE WITH MALUNION
M80041S	AGE-RELATED OSTEOPOROSIS WITH CURRENT PATHOLOGICAL FRACTURE, RIGHT HAND SEQUELA
M80042A	AGE-RELATED OSTEOPOROSIS WITH CURRENT PATHOLOGICAL FRACTURE, LEFT HAND INITIAL ENCOUNTER FOR FRACTURE
M80042D	AGE-RELATED OSTEOPOROSIS WITH CURRENT PATHOLOGICAL FRACTURE, LEFT HAND SUBSEQUENT ENCOUNTER FOR FRACTURE WITH ROUTINE HEALING
M80042G	AGE-RELATED OSTEOPOROSIS WITH CURRENT PATHOLOGICAL FRACTURE, LEFT HAND SUBSEQUENT ENCOUNTER FOR FRACTURE WITH DELAYED HEALING
M80042K	AGE-RELATED OSTEOPOROSIS WITH CURRENT PATHOLOGICAL FRACTURE, LEFT HAND SUBSEQUENT ENCOUNTER FOR FRACTURE WITH NONUNION

Step 4 (diagnosis of osteoporosis)	
Required diagnosis: 1	
Look back timeframe: 365 days	
ICD-10 Code	Description
M80042P	AGE-RELATED OSTEOPOROSIS WITH CURRENT PATHOLOGICAL FRACTURE, LEFT HAND SUBSEQUENT ENCOUNTER FOR FRACTURE WITH MALUNION
M80042S	AGE-RELATED OSTEOPOROSIS WITH CURRENT PATHOLOGICAL FRACTURE, LEFT HAND SEQUELA
M80049A	AGE-RELATED OSTEOPOROSIS WITH CURRENT PATHOLOGICAL FRACTURE, UNSPECIFIED HAND INITIAL ENCOUNTER FOR FRACTURE
M80049D	AGE-RELATED OSTEOPOROSIS WITH CURRENT PATHOLOGICAL FRACTURE, UNSPECIFIED HAND SUBSEQUENT ENCOUNTER FOR FRACTURE WITH ROUTINE HEALING
M80049G	AGE-RELATED OSTEOPOROSIS WITH CURRENT PATHOLOGICAL FRACTURE, UNSPECIFIED HAND SUBSEQUENT ENCOUNTER FOR FRACTURE WITH DELAYED HEALING
M80049K	AGE-RELATED OSTEOPOROSIS WITH CURRENT PATHOLOGICAL FRACTURE, UNSPECIFIED HAND SUBSEQUENT ENCOUNTER FOR FRACTURE WITH NONUNION
M80049P	AGE-RELATED OSTEOPOROSIS WITH CURRENT PATHOLOGICAL FRACTURE, UNSPECIFIED HAND SUBSEQUENT ENCOUNTER FOR FRACTURE WITH MALUNION
M80049S	AGE-RELATED OSTEOPOROSIS WITH CURRENT PATHOLOGICAL FRACTURE, UNSPECIFIED HAND SEQUELA
M80051A	AGE-RELATED OSTEOPOROSIS WITH CURRENT PATHOLOGICAL FRACTURE, RIGHT FEMUR INITIAL ENCOUNTER FOR FRACTURE
M80051D	AGE-RELATED OSTEOPOROSIS WITH CURRENT PATHOLOGICAL FRACTURE, RIGHT FEMUR SUBSEQUENT ENCOUNTER FOR FRACTURE WITH ROUTINE HEALING
M80051G	AGE-RELATED OSTEOPOROSIS WITH CURRENT PATHOLOGICAL FRACTURE, RIGHT FEMUR SUBSEQUENT ENCOUNTER FOR FRACTURE WITH DELAYED HEALING
M80051K	AGE-RELATED OSTEOPOROSIS WITH CURRENT PATHOLOGICAL FRACTURE, RIGHT FEMUR SUBSEQUENT ENCOUNTER FOR FRACTURE WITH NONUNION
M80051P	AGE-RELATED OSTEOPOROSIS WITH CURRENT PATHOLOGICAL FRACTURE, RIGHT FEMUR SUBSEQUENT ENCOUNTER FOR FRACTURE WITH MALUNION
M80051S	AGE-RELATED OSTEOPOROSIS WITH CURRENT PATHOLOGICAL FRACTURE, RIGHT FEMUR SEQUELA
M80052A	AGE-RELATED OSTEOPOROSIS WITH CURRENT PATHOLOGICAL FRACTURE, LEFT FEMUR INITIAL ENCOUNTER FOR FRACTURE
M80052D	AGE-RELATED OSTEOPOROSIS WITH CURRENT PATHOLOGICAL FRACTURE, LEFT FEMUR SUBSEQUENT ENCOUNTER FOR FRACTURE WITH ROUTINE HEALING
M80052G	AGE-RELATED OSTEOPOROSIS WITH CURRENT PATHOLOGICAL FRACTURE, LEFT FEMUR SUBSEQUENT ENCOUNTER FOR FRACTURE WITH DELAYED HEALING

Step 4 (diagnosis of osteoporosis)	
Required diagnosis: 1	
Look back timeframe: 365 days	
ICD-10 Code	Description
M80052K	AGE-RELATED OSTEOPOROSIS WITH CURRENT PATHOLOGICAL FRACTURE, LEFT FEMUR SUBSEQUENT ENCOUNTER FOR FRACTURE WITH NONUNION
M80052P	AGE-RELATED OSTEOPOROSIS WITH CURRENT PATHOLOGICAL FRACTURE, LEFT FEMUR SUBSEQUENT ENCOUNTER FOR FRACTURE WITH MALUNION
M80052S	AGE-RELATED OSTEOPOROSIS WITH CURRENT PATHOLOGICAL FRACTURE, LEFT FEMUR SEQUELA
M80059A	AGE-RELATED OSTEOPOROSIS WITH CURRENT PATHOLOGICAL FRACTURE, UNSPECIFIED FEMUR INITIAL ENCOUNTER FOR FRACTURE
M80059D	AGE-RELATED OSTEOPOROSIS WITH CURRENT PATHOLOGICAL FRACTURE, UNSPECIFIED FEMUR SUBSEQUENT ENCOUNTER FOR FRACTURE WITH ROUTINE HEALING
M80059G	AGE-RELATED OSTEOPOROSIS WITH CURRENT PATHOLOGICAL FRACTURE, UNSPECIFIED FEMUR SUBSEQUENT ENCOUNTER FOR FRACTURE WITH DELAYED HEALING
M80059K	AGE-RELATED OSTEOPOROSIS WITH CURRENT PATHOLOGICAL FRACTURE, UNSPECIFIED FEMUR SUBSEQUENT ENCOUNTER FOR FRACTURE WITH NONUNION
M80059P	AGE-RELATED OSTEOPOROSIS WITH CURRENT PATHOLOGICAL FRACTURE, UNSPECIFIED FEMUR SUBSEQUENT ENCOUNTER FOR FRACTURE WITH MALUNION
M80059S	AGE-RELATED OSTEOPOROSIS WITH CURRENT PATHOLOGICAL FRACTURE, UNSPECIFIED FEMUR SEQUELA
M80061A	AGE-RELATED OSTEOPOROSIS WITH CURRENT PATHOLOGICAL FRACTURE, RIGHT LOWER LEG INITIAL ENCOUNTER FOR FRACTURE
M80061D	AGE-RELATED OSTEOPOROSIS WITH CURRENT PATHOLOGICAL FRACTURE, RIGHT LOWER LEG SUBSEQUENT ENCOUNTER FOR FRACTURE WITH ROUTINE HEALING
M80061G	AGE-RELATED OSTEOPOROSIS WITH CURRENT PATHOLOGICAL FRACTURE, RIGHT LOWER LEG SUBSEQUENT ENCOUNTER FOR FRACTURE WITH DELAYED HEALING
M80061K	AGE-RELATED OSTEOPOROSIS WITH CURRENT PATHOLOGICAL FRACTURE, RIGHT LOWER LEG SUBSEQUENT ENCOUNTER FOR FRACTURE WITH NONUNION
M80061P	AGE-RELATED OSTEOPOROSIS WITH CURRENT PATHOLOGICAL FRACTURE, RIGHT LOWER LEG SUBSEQUENT ENCOUNTER FOR FRACTURE WITH MALUNION
M80061S	AGE-RELATED OSTEOPOROSIS WITH CURRENT PATHOLOGICAL FRACTURE, RIGHT LOWER LEG SEQUELA
M80062A	AGE-RELATED OSTEOPOROSIS WITH CURRENT PATHOLOGICAL FRACTURE, LEFT LOWER LEG INITIAL ENCOUNTER FOR FRACTURE
M80062D	AGE-RELATED OSTEOPOROSIS WITH CURRENT PATHOLOGICAL FRACTURE, LEFT LOWER LEG SUBSEQUENT ENCOUNTER FOR FRACTURE WITH ROUTINE HEALING

Step 4 (diagnosis of osteoporosis)	
Required diagnosis: 1	
Look back timeframe: 365 days	
ICD-10 Code	Description
M80062G	AGE-RELATED OSTEOPOROSIS WITH CURRENT PATHOLOGICAL FRACTURE, LEFT LOWER LEG SUBSEQUENT ENCOUNTER FOR FRACTURE WITH DELAYED HEALING
M80062K	AGE-RELATED OSTEOPOROSIS WITH CURRENT PATHOLOGICAL FRACTURE, LEFT LOWER LEG SUBSEQUENT ENCOUNTER FOR FRACTURE WITH NONUNION
M80062P	AGE-RELATED OSTEOPOROSIS WITH CURRENT PATHOLOGICAL FRACTURE, LEFT LOWER LEG SUBSEQUENT ENCOUNTER FOR FRACTURE WITH MALUNION
M80062S	AGE-RELATED OSTEOPOROSIS WITH CURRENT PATHOLOGICAL FRACTURE, LEFT LOWER LEG SEQUELA
M80069A	AGE-RELATED OSTEOPOROSIS WITH CURRENT PATHOLOGICAL FRACTURE, UNSPECIFIED LOWER LEG INITIAL ENCOUNTER FOR FRACTURE
M80069D	AGE-RELATED OSTEOPOROSIS WITH CURRENT PATHOLOGICAL FRACTURE, UNSPECIFIED LOWER LEG SUBSEQUENT ENCOUNTER FOR FRACTURE WITH ROUTINE HEALING
M80069G	AGE-RELATED OSTEOPOROSIS WITH CURRENT PATHOLOGICAL FRACTURE, UNSPECIFIED LOWER LEG SUBSEQUENT ENCOUNTER FOR FRACTURE WITH DELAYED HEALING
M80069K	AGE-RELATED OSTEOPOROSIS WITH CURRENT PATHOLOGICAL FRACTURE, UNSPECIFIED LOWER LEG SUBSEQUENT ENCOUNTER FOR FRACTURE WITH NONUNION
M80069P	AGE-RELATED OSTEOPOROSIS WITH CURRENT PATHOLOGICAL FRACTURE, UNSPECIFIED LOWER LEG SUBSEQUENT ENCOUNTER FOR FRACTURE WITH MALUNION
M80069S	AGE-RELATED OSTEOPOROSIS WITH CURRENT PATHOLOGICAL FRACTURE, UNSPECIFIED LOWER LEG SEQUELA
M80071A	AGE-RELATED OSTEOPOROSIS WITH CURRENT PATHOLOGICAL FRACTURE, RIGHT ANKLE AND FOOT INITIAL ENCOUNTER FOR FRACTURE
M80071D	AGE-RELATED OSTEOPOROSIS WITH CURRENT PATHOLOGICAL FRACTURE, RIGHT ANKLE AND FOOT SUBSEQUENT ENCOUNTER FOR FRACTURE WITH ROUTINE HEALING
M80071G	AGE-RELATED OSTEOPOROSIS WITH CURRENT PATHOLOGICAL FRACTURE, RIGHT ANKLE AND FOOT SUBSEQUENT ENCOUNTER FOR FRACTURE WITH DELAYED HEALING
M80071K	AGE-RELATED OSTEOPOROSIS WITH CURRENT PATHOLOGICAL FRACTURE, RIGHT ANKLE AND FOOT SUBSEQUENT ENCOUNTER FOR FRACTURE WITH NONUNION
M80071P	AGE-RELATED OSTEOPOROSIS WITH CURRENT PATHOLOGICAL FRACTURE, RIGHT ANKLE AND FOOT SUBSEQUENT ENCOUNTER FOR FRACTURE WITH MALUNION
M80071S	AGE-RELATED OSTEOPOROSIS WITH CURRENT PATHOLOGICAL FRACTURE, RIGHT ANKLE AND FOOT SEQUELA

Step 4 (diagnosis of osteoporosis)	
Required diagnosis: 1	
Look back timeframe: 365 days	
ICD-10 Code	Description
M80072A	AGE-RELATED OSTEOPOROSIS WITH CURRENT PATHOLOGICAL FRACTURE, LEFT ANKLE AND FOOT INITIAL ENCOUNTER FOR FRACTURE
M80072D	AGE-RELATED OSTEOPOROSIS WITH CURRENT PATHOLOGICAL FRACTURE, LEFT ANKLE AND FOOT SUBSEQUENT ENCOUNTER FOR FRACTURE WITH ROUTINE HEALING
M80072G	AGE-RELATED OSTEOPOROSIS WITH CURRENT PATHOLOGICAL FRACTURE, LEFT ANKLE AND FOOT SUBSEQUENT ENCOUNTER FOR FRACTURE WITH DELAYED HEALING
M80072K	AGE-RELATED OSTEOPOROSIS WITH CURRENT PATHOLOGICAL FRACTURE, LEFT ANKLE AND FOOT SUBSEQUENT ENCOUNTER FOR FRACTURE WITH NONUNION
M80072P	AGE-RELATED OSTEOPOROSIS WITH CURRENT PATHOLOGICAL FRACTURE, LEFT ANKLE AND FOOT SUBSEQUENT ENCOUNTER FOR FRACTURE WITH MALUNION
M80072S	AGE-RELATED OSTEOPOROSIS WITH CURRENT PATHOLOGICAL FRACTURE, LEFT ANKLE AND FOOT SEQUELA
M80079A	AGE-RELATED OSTEOPOROSIS WITH CURRENT PATHOLOGICAL FRACTURE, UNSPECIFIED ANKLE AND FOOT INITIAL ENCOUNTER FOR FRACTURE
M80079D	AGE-RELATED OSTEOPOROSIS WITH CURRENT PATHOLOGICAL FRACTURE, UNSPECIFIED ANKLE AND FOOT SUBSEQUENT ENCOUNTER FOR FRACTURE WITH ROUTINE HEALING
M80079G	AGE-RELATED OSTEOPOROSIS WITH CURRENT PATHOLOGICAL FRACTURE, UNSPECIFIED ANKLE AND FOOT SUBSEQUENT ENCOUNTER FOR FRACTURE WITH DELAYED HEALING
M80079K	AGE-RELATED OSTEOPOROSIS WITH CURRENT PATHOLOGICAL FRACTURE, UNSPECIFIED ANKLE AND FOOT SUBSEQUENT ENCOUNTER FOR FRACTURE WITH NONUNION
M80079P	AGE-RELATED OSTEOPOROSIS WITH CURRENT PATHOLOGICAL FRACTURE, UNSPECIFIED ANKLE AND FOOT SUBSEQUENT ENCOUNTER FOR FRACTURE WITH MALUNION
M80079S	AGE-RELATED OSTEOPOROSIS WITH CURRENT PATHOLOGICAL FRACTURE, UNSPECIFIED ANKLE AND FOOT SEQUELA
M8008XA	OTHER OSTEOPOROSIS WITH CURRENT PATHOLOGICAL FRACTURE, UNSPECIFIED SITE INITIAL ENCOUNTER FOR FRACTURE
M8008XD	OTHER OSTEOPOROSIS WITH CURRENT PATHOLOGICAL FRACTURE, UNSPECIFIED SITE SUBSEQUENT ENCOUNTER FOR FRACTURE WITH ROUTINE HEALING
M8008XG	OTHER OSTEOPOROSIS WITH CURRENT PATHOLOGICAL FRACTURE, UNSPECIFIED SITE SUBSEQUENT ENCOUNTER FOR FRACTURE WITH DELAYED HEALING
M8008XK	OTHER OSTEOPOROSIS WITH CURRENT PATHOLOGICAL FRACTURE, UNSPECIFIED SITE SUBSEQUENT ENCOUNTER FOR FRACTURE WITH NONUNION

Step 4 (diagnosis of osteoporosis)	
Required diagnosis: 1	
Look back timeframe: 365 days	
ICD-10 Code	Description
M8008XP	OTHER OSTEOPOROSIS WITH CURRENT PATHOLOGICAL FRACTURE, UNSPECIFIED SITE SUBSEQUENT ENCOUNTER FOR FRACTURE WITH MALUNION
M8008XS	OTHER OSTEOPOROSIS WITH CURRENT PATHOLOGICAL FRACTURE, UNSPECIFIED SITE SEQUELA
M80811A	OTHER OSTEOPOROSIS WITH CURRENT PATHOLOGICAL FRACTURE, RIGHT SHOULDER INITIAL ENCOUNTER FOR FRACTURE
M80811D	OTHER OSTEOPOROSIS WITH CURRENT PATHOLOGICAL FRACTURE, RIGHT SHOULDER SUBSEQUENT ENCOUNTER FOR FRACTURE WITH ROUTINE HEALING
M80811G	OTHER OSTEOPOROSIS WITH CURRENT PATHOLOGICAL FRACTURE, RIGHT SHOULDER SUBSEQUENT ENCOUNTER FOR FRACTURE WITH DELAYED HEALING
M80811K	OTHER OSTEOPOROSIS WITH CURRENT PATHOLOGICAL FRACTURE, RIGHT SHOULDER SUBSEQUENT ENCOUNTER FOR FRACTURE WITH NONUNION
M80811P	OTHER OSTEOPOROSIS WITH CURRENT PATHOLOGICAL FRACTURE, RIGHT SHOULDER SUBSEQUENT ENCOUNTER FOR FRACTURE WITH MALUNION
M80811S	OTHER OSTEOPOROSIS WITH CURRENT PATHOLOGICAL FRACTURE, RIGHT SHOULDER SEQUELA
M80812A	OTHER OSTEOPOROSIS WITH CURRENT PATHOLOGICAL FRACTURE, LEFT SHOULDER INITIAL ENCOUNTER FOR FRACTURE
M80812D	OTHER OSTEOPOROSIS WITH CURRENT PATHOLOGICAL FRACTURE, LEFT SHOULDER SUBSEQUENT ENCOUNTER FOR FRACTURE WITH ROUTINE HEALING
M80812G	OTHER OSTEOPOROSIS WITH CURRENT PATHOLOGICAL FRACTURE, LEFT SHOULDER SUBSEQUENT ENCOUNTER FOR FRACTURE WITH DELAYED HEALING
M80812K	OTHER OSTEOPOROSIS WITH CURRENT PATHOLOGICAL FRACTURE, LEFT SHOULDER SUBSEQUENT ENCOUNTER FOR FRACTURE WITH NONUNION
M80812P	OTHER OSTEOPOROSIS WITH CURRENT PATHOLOGICAL FRACTURE, LEFT SHOULDER SUBSEQUENT ENCOUNTER FOR FRACTURE WITH MALUNION
M80812S	OTHER OSTEOPOROSIS WITH CURRENT PATHOLOGICAL FRACTURE, LEFT SHOULDER SEQUELA
M80819A	OTHER OSTEOPOROSIS WITH CURRENT PATHOLOGICAL FRACTURE, UNSPECIFIED SHOULDER INITIAL ENCOUNTER FOR FRACTURE
M80819D	OTHER OSTEOPOROSIS WITH CURRENT PATHOLOGICAL FRACTURE, UNSPECIFIED SHOULDER SUBSEQUENT ENCOUNTER FOR FRACTURE WITH ROUTINE HEALING
M80819G	OTHER OSTEOPOROSIS WITH CURRENT PATHOLOGICAL FRACTURE, UNSPECIFIED SHOULDER SUBSEQUENT ENCOUNTER FOR FRACTURE WITH DELAYED HEALING

Step 4 (diagnosis of osteoporosis)	
Required diagnosis: 1	
Look back timeframe: 365 days	
ICD-10 Code	Description
M80819K	OTHER OSTEOPOROSIS WITH CURRENT PATHOLOGICAL FRACTURE, UNSPECIFIED SHOULDER SUBSEQUENT ENCOUNTER FOR FRACTURE WITH NONUNION
M80819P	OTHER OSTEOPOROSIS WITH CURRENT PATHOLOGICAL FRACTURE, UNSPECIFIED SHOULDER SUBSEQUENT ENCOUNTER FOR FRACTURE WITH MALUNION
M80819S	OTHER OSTEOPOROSIS WITH CURRENT PATHOLOGICAL FRACTURE, UNSPECIFIED SHOULDER SEQUELA
M80821A	OTHER OSTEOPOROSIS WITH CURRENT PATHOLOGICAL FRACTURE, RIGHT HUMERUS INITIAL ENCOUNTER FOR FRACTURE
M80821D	OTHER OSTEOPOROSIS WITH CURRENT PATHOLOGICAL FRACTURE, RIGHT HUMERUS SUBSEQUENT ENCOUNTER FOR FRACTURE WITH ROUTINE HEALING
M80821G	OTHER OSTEOPOROSIS WITH CURRENT PATHOLOGICAL FRACTURE, RIGHT HUMERUS SUBSEQUENT ENCOUNTER FOR FRACTURE WITH DELAYED HEALING
M80821K	OTHER OSTEOPOROSIS WITH CURRENT PATHOLOGICAL FRACTURE, RIGHT HUMERUS SUBSEQUENT ENCOUNTER FOR FRACTURE WITH NONUNION
M80821P	OTHER OSTEOPOROSIS WITH CURRENT PATHOLOGICAL FRACTURE, RIGHT HUMERUS SUBSEQUENT ENCOUNTER FOR FRACTURE WITH MALUNION
M80821S	OTHER OSTEOPOROSIS WITH CURRENT PATHOLOGICAL FRACTURE, RIGHT HUMERUS SEQUELA
M80822A	OTHER OSTEOPOROSIS WITH CURRENT PATHOLOGICAL FRACTURE, LEFT HUMERUS INITIAL ENCOUNTER FOR FRACTURE
M80822D	OTHER OSTEOPOROSIS WITH CURRENT PATHOLOGICAL FRACTURE, LEFT HUMERUS SUBSEQUENT ENCOUNTER FOR FRACTURE WITH ROUTINE HEALING
M80822G	OTHER OSTEOPOROSIS WITH CURRENT PATHOLOGICAL FRACTURE, LEFT HUMERUS SUBSEQUENT ENCOUNTER FOR FRACTURE WITH DELAYED HEALING
M80822K	OTHER OSTEOPOROSIS WITH CURRENT PATHOLOGICAL FRACTURE, LEFT HUMERUS SUBSEQUENT ENCOUNTER FOR FRACTURE WITH NONUNION
M80822P	OTHER OSTEOPOROSIS WITH CURRENT PATHOLOGICAL FRACTURE, LEFT HUMERUS SUBSEQUENT ENCOUNTER FOR FRACTURE WITH MALUNION
M80822S	OTHER OSTEOPOROSIS WITH CURRENT PATHOLOGICAL FRACTURE, LEFT HUMERUS SEQUELA
M80829A	OTHER OSTEOPOROSIS WITH CURRENT PATHOLOGICAL FRACTURE, UNSPECIFIED HUMERUS INITIAL ENCOUNTER FOR FRACTURE
M80829D	OTHER OSTEOPOROSIS WITH CURRENT PATHOLOGICAL FRACTURE, UNSPECIFIED HUMERUS SUBSEQUENT ENCOUNTER FOR FRACTURE WITH ROUTINE HEALING

Step 4 (diagnosis of osteoporosis)	
Required diagnosis: 1	
Look back timeframe: 365 days	
ICD-10 Code	Description
M80829G	OTHER OSTEOPOROSIS WITH CURRENT PATHOLOGICAL FRACTURE, UNSPECIFIED HUMERUS SUBSEQUENT ENCOUNTER FOR FRACTURE WITH DELAYED HEALING
M80829K	OTHER OSTEOPOROSIS WITH CURRENT PATHOLOGICAL FRACTURE, UNSPECIFIED HUMERUS SUBSEQUENT ENCOUNTER FOR FRACTURE WITH NONUNION
M80829P	OTHER OSTEOPOROSIS WITH CURRENT PATHOLOGICAL FRACTURE, UNSPECIFIED HUMERUS SUBSEQUENT ENCOUNTER FOR FRACTURE WITH MALUNION
M80829S	OTHER OSTEOPOROSIS WITH CURRENT PATHOLOGICAL FRACTURE, UNSPECIFIED HUMERUS SEQUELA
M80831A	OTHER OSTEOPOROSIS WITH CURRENT PATHOLOGICAL FRACTURE, RIGHT FOREARM INITIAL ENCOUNTER FOR FRACTURE
M80831D	OTHER OSTEOPOROSIS WITH CURRENT PATHOLOGICAL FRACTURE, RIGHT FOREARM SUBSEQUENT ENCOUNTER FOR FRACTURE WITH ROUTINE HEALING
M80831G	OTHER OSTEOPOROSIS WITH CURRENT PATHOLOGICAL FRACTURE, RIGHT FOREARM SUBSEQUENT ENCOUNTER FOR FRACTURE WITH DELAYED HEALING
M80831K	OTHER OSTEOPOROSIS WITH CURRENT PATHOLOGICAL FRACTURE, RIGHT FOREARM SUBSEQUENT ENCOUNTER FOR FRACTURE WITH NONUNION
M80831P	OTHER OSTEOPOROSIS WITH CURRENT PATHOLOGICAL FRACTURE, RIGHT FOREARM SUBSEQUENT ENCOUNTER FOR FRACTURE WITH MALUNION
M80831S	OTHER OSTEOPOROSIS WITH CURRENT PATHOLOGICAL FRACTURE, RIGHT FOREARM SEQUELA
M80832A	OTHER OSTEOPOROSIS WITH CURRENT PATHOLOGICAL FRACTURE, LEFT FOREARM INITIAL ENCOUNTER FOR FRACTURE
M80832D	OTHER OSTEOPOROSIS WITH CURRENT PATHOLOGICAL FRACTURE, LEFT FOREARM SUBSEQUENT ENCOUNTER FOR FRACTURE WITH ROUTINE HEALING
M80832G	OTHER OSTEOPOROSIS WITH CURRENT PATHOLOGICAL FRACTURE, LEFT FOREARM SUBSEQUENT ENCOUNTER FOR FRACTURE WITH DELAYED HEALING
M80832K	OTHER OSTEOPOROSIS WITH CURRENT PATHOLOGICAL FRACTURE, LEFT FOREARM SUBSEQUENT ENCOUNTER FOR FRACTURE WITH NONUNION
M80832P	OTHER OSTEOPOROSIS WITH CURRENT PATHOLOGICAL FRACTURE, LEFT FOREARM SUBSEQUENT ENCOUNTER FOR FRACTURE WITH MALUNION
M80832S	OTHER OSTEOPOROSIS WITH CURRENT PATHOLOGICAL FRACTURE, LEFT FOREARM SEQUELA
M80839A	OTHER OSTEOPOROSIS WITH CURRENT PATHOLOGICAL FRACTURE, UNSPECIFIED FOREARM INITIAL ENCOUNTER FOR FRACTURE

Step 4 (diagnosis of osteoporosis)	
Required diagnosis: 1	
Look back timeframe: 365 days	
ICD-10 Code	Description
M80839D	OTHER OSTEOPOROSIS WITH CURRENT PATHOLOGICAL FRACTURE, UNSPECIFIED FOREARM SUBSEQUENT ENCOUNTER FOR FRACTURE WITH ROUTINE HEALING
M80839G	OTHER OSTEOPOROSIS WITH CURRENT PATHOLOGICAL FRACTURE, UNSPECIFIED FOREARM SUBSEQUENT ENCOUNTER FOR FRACTURE WITH DELAYED HEALING
M80839K	OTHER OSTEOPOROSIS WITH CURRENT PATHOLOGICAL FRACTURE, UNSPECIFIED FOREARM SUBSEQUENT ENCOUNTER FOR FRACTURE WITH NONUNION
M80839P	OTHER OSTEOPOROSIS WITH CURRENT PATHOLOGICAL FRACTURE, UNSPECIFIED FOREARM SUBSEQUENT ENCOUNTER FOR FRACTURE WITH MALUNION
M80839S	OTHER OSTEOPOROSIS WITH CURRENT PATHOLOGICAL FRACTURE, UNSPECIFIED FOREARM SEQUELA
M80841A	OTHER OSTEOPOROSIS WITH CURRENT PATHOLOGICAL FRACTURE, RIGHT HAND INITIAL ENCOUNTER FOR FRACTURE
M80841D	OTHER OSTEOPOROSIS WITH CURRENT PATHOLOGICAL FRACTURE, RIGHT HAND SUBSEQUENT ENCOUNTER FOR FRACTURE WITH ROUTINE HEALING
M80841G	OTHER OSTEOPOROSIS WITH CURRENT PATHOLOGICAL FRACTURE, RIGHT HAND SUBSEQUENT ENCOUNTER FOR FRACTURE WITH DELAYED HEALING
M80841K	OTHER OSTEOPOROSIS WITH CURRENT PATHOLOGICAL FRACTURE, RIGHT HAND SUBSEQUENT ENCOUNTER FOR FRACTURE WITH NONUNION
M80841P	OTHER OSTEOPOROSIS WITH CURRENT PATHOLOGICAL FRACTURE, RIGHT HAND SUBSEQUENT ENCOUNTER FOR FRACTURE WITH MALUNION
M80841S	OTHER OSTEOPOROSIS WITH CURRENT PATHOLOGICAL FRACTURE, RIGHT HAND SEQUELA
M80842A	OTHER OSTEOPOROSIS WITH CURRENT PATHOLOGICAL FRACTURE, LEFT HAND INITIAL ENCOUNTER FOR FRACTURE
M80842D	OTHER OSTEOPOROSIS WITH CURRENT PATHOLOGICAL FRACTURE, LEFT HAND SUBSEQUENT ENCOUNTER FOR FRACTURE WITH ROUTINE HEALING
M80842G	OTHER OSTEOPOROSIS WITH CURRENT PATHOLOGICAL FRACTURE, LEFT HAND SUBSEQUENT ENCOUNTER FOR FRACTURE WITH DELAYED HEALING
M80842K	OTHER OSTEOPOROSIS WITH CURRENT PATHOLOGICAL FRACTURE, LEFT HAND SUBSEQUENT ENCOUNTER FOR FRACTURE WITH NONUNION
M80842P	OTHER OSTEOPOROSIS WITH CURRENT PATHOLOGICAL FRACTURE, LEFT HAND SUBSEQUENT ENCOUNTER FOR FRACTURE WITH MALUNION

Step 4 (diagnosis of osteoporosis)	
Required diagnosis: 1	
Look back timeframe: 365 days	
ICD-10 Code	Description
M80842S	OTHER OSTEOPOROSIS WITH CURRENT PATHOLOGICAL FRACTURE, LEFT HAND SEQUELA
M80849A	OTHER OSTEOPOROSIS WITH CURRENT PATHOLOGICAL FRACTURE, UNSPECIFIED HAND INITIAL ENCOUNTER FOR FRACTURE
M80849D	OTHER OSTEOPOROSIS WITH CURRENT PATHOLOGICAL FRACTURE, UNSPECIFIED HAND SUBSEQUENT ENCOUNTER FOR FRACTURE WITH ROUTINE HEALING
M80849G	OTHER OSTEOPOROSIS WITH CURRENT PATHOLOGICAL FRACTURE, UNSPECIFIED HAND SUBSEQUENT ENCOUNTER FOR FRACTURE WITH DELAYED HEALING
M80849K	OTHER OSTEOPOROSIS WITH CURRENT PATHOLOGICAL FRACTURE, UNSPECIFIED HAND SUBSEQUENT ENCOUNTER FOR FRACTURE WITH NONUNION
M80849P	OTHER OSTEOPOROSIS WITH CURRENT PATHOLOGICAL FRACTURE, UNSPECIFIED HAND SUBSEQUENT ENCOUNTER FOR FRACTURE WITH MALUNION
M80849S	OTHER OSTEOPOROSIS WITH CURRENT PATHOLOGICAL FRACTURE, UNSPECIFIED HAND SEQUELA
M80851A	OTHER OSTEOPOROSIS WITH CURRENT PATHOLOGICAL FRACTURE, RIGHT FEMUR INITIAL ENCOUNTER FOR FRACTURE
M80851D	OTHER OSTEOPOROSIS WITH CURRENT PATHOLOGICAL FRACTURE, RIGHT FEMUR SUBSEQUENT ENCOUNTER FOR FRACTURE WITH ROUTINE HEALING
M80851G	OTHER OSTEOPOROSIS WITH CURRENT PATHOLOGICAL FRACTURE, RIGHT FEMUR SUBSEQUENT ENCOUNTER FOR FRACTURE WITH DELAYED HEALING
M80851K	OTHER OSTEOPOROSIS WITH CURRENT PATHOLOGICAL FRACTURE, RIGHT FEMUR SUBSEQUENT ENCOUNTER FOR FRACTURE WITH NONUNION
M80851P	OTHER OSTEOPOROSIS WITH CURRENT PATHOLOGICAL FRACTURE, RIGHT FEMUR SUBSEQUENT ENCOUNTER FOR FRACTURE WITH MALUNION
M80851S	OTHER OSTEOPOROSIS WITH CURRENT PATHOLOGICAL FRACTURE, RIGHT FEMUR SEQUELA
M80852A	OTHER OSTEOPOROSIS WITH CURRENT PATHOLOGICAL FRACTURE, LEFT FEMUR INITIAL ENCOUNTER FOR FRACTURE
M80852D	OTHER OSTEOPOROSIS WITH CURRENT PATHOLOGICAL FRACTURE, LEFT FEMUR SUBSEQUENT ENCOUNTER FOR FRACTURE WITH ROUTINE HEALING
M80852G	OTHER OSTEOPOROSIS WITH CURRENT PATHOLOGICAL FRACTURE, LEFT FEMUR SUBSEQUENT ENCOUNTER FOR FRACTURE WITH DELAYED HEALING
M80852K	OTHER OSTEOPOROSIS WITH CURRENT PATHOLOGICAL FRACTURE, LEFT FEMUR SUBSEQUENT ENCOUNTER FOR FRACTURE WITH NONUNION

Step 4 (diagnosis of osteoporosis)	
Required diagnosis: 1	
Look back timeframe: 365 days	
ICD-10 Code	Description
M80852P	OTHER OSTEOPOROSIS WITH CURRENT PATHOLOGICAL FRACTURE, LEFT FEMUR SUBSEQUENT ENCOUNTER FOR FRACTURE WITH MALUNION
M80852S	OTHER OSTEOPOROSIS WITH CURRENT PATHOLOGICAL FRACTURE, LEFT FEMUR SEQUELA
M80859A	OTHER OSTEOPOROSIS WITH CURRENT PATHOLOGICAL FRACTURE, UNSPECIFIED FEMUR INITIAL ENCOUNTER FOR FRACTURE
M80859D	OTHER OSTEOPOROSIS WITH CURRENT PATHOLOGICAL FRACTURE, UNSPECIFIED FEMUR SUBSEQUENT ENCOUNTER FOR FRACTURE WITH ROUTINE HEALING
M80859G	OTHER OSTEOPOROSIS WITH CURRENT PATHOLOGICAL FRACTURE, UNSPECIFIED FEMUR SUBSEQUENT ENCOUNTER FOR FRACTURE WITH DELAYED HEALING
M80859K	OTHER OSTEOPOROSIS WITH CURRENT PATHOLOGICAL FRACTURE, UNSPECIFIED FEMUR SUBSEQUENT ENCOUNTER FOR FRACTURE WITH NONUNION
M80859P	OTHER OSTEOPOROSIS WITH CURRENT PATHOLOGICAL FRACTURE, UNSPECIFIED FEMUR SUBSEQUENT ENCOUNTER FOR FRACTURE WITH MALUNION
M80859S	OTHER OSTEOPOROSIS WITH CURRENT PATHOLOGICAL FRACTURE, UNSPECIFIED FEMUR SEQUELA
M80861A	OTHER OSTEOPOROSIS WITH CURRENT PATHOLOGICAL FRACTURE, RIGHT LOWER LEG INITIAL ENCOUNTER FOR FRACTURE
M80861D	OTHER OSTEOPOROSIS WITH CURRENT PATHOLOGICAL FRACTURE, RIGHT LOWER LEG SUBSEQUENT ENCOUNTER FOR FRACTURE WITH ROUTINE HEALING
M80861G	OTHER OSTEOPOROSIS WITH CURRENT PATHOLOGICAL FRACTURE, RIGHT LOWER LEG SUBSEQUENT ENCOUNTER FOR FRACTURE WITH DELAYED HEALING
M80861K	OTHER OSTEOPOROSIS WITH CURRENT PATHOLOGICAL FRACTURE, RIGHT LOWER LEG SUBSEQUENT ENCOUNTER FOR FRACTURE WITH NONUNION
M80861P	OTHER OSTEOPOROSIS WITH CURRENT PATHOLOGICAL FRACTURE, RIGHT LOWER LEG SUBSEQUENT ENCOUNTER FOR FRACTURE WITH MALUNION
M80861S	OTHER OSTEOPOROSIS WITH CURRENT PATHOLOGICAL FRACTURE, RIGHT LOWER LEG SEQUELA
M80862A	OTHER OSTEOPOROSIS WITH CURRENT PATHOLOGICAL FRACTURE, LEFT LOWER LEG INITIAL ENCOUNTER FOR FRACTURE
M80862D	OTHER OSTEOPOROSIS WITH CURRENT PATHOLOGICAL FRACTURE, LEFT LOWER LEG SUBSEQUENT ENCOUNTER FOR FRACTURE WITH ROUTINE HEALING
M80862G	OTHER OSTEOPOROSIS WITH CURRENT PATHOLOGICAL FRACTURE, LEFT LOWER LEG SUBSEQUENT ENCOUNTER FOR FRACTURE WITH DELAYED HEALING

Step 4 (diagnosis of osteoporosis)	
Required diagnosis: 1	
Look back timeframe: 365 days	
ICD-10 Code	Description
M80862K	OTHER OSTEOPOROSIS WITH CURRENT PATHOLOGICAL FRACTURE, LEFT LOWER LEG SUBSEQUENT ENCOUNTER FOR FRACTURE WITH NONUNION
M80862P	OTHER OSTEOPOROSIS WITH CURRENT PATHOLOGICAL FRACTURE, LEFT LOWER LEG SUBSEQUENT ENCOUNTER FOR FRACTURE WITH MALUNION
M80862S	OTHER OSTEOPOROSIS WITH CURRENT PATHOLOGICAL FRACTURE, LEFT LOWER LEG SEQUELA
M80869A	OTHER OSTEOPOROSIS WITH CURRENT PATHOLOGICAL FRACTURE, UNSPECIFIED LOWER LEG INITIAL ENCOUNTER FOR FRACTURE
M80869D	OTHER OSTEOPOROSIS WITH CURRENT PATHOLOGICAL FRACTURE, UNSPECIFIED LOWER LEG SUBSEQUENT ENCOUNTER FOR FRACTURE WITH ROUTINE HEALING
M80869G	OTHER OSTEOPOROSIS WITH CURRENT PATHOLOGICAL FRACTURE, UNSPECIFIED LOWER LEG SUBSEQUENT ENCOUNTER FOR FRACTURE WITH DELAYED HEALING
M80869K	OTHER OSTEOPOROSIS WITH CURRENT PATHOLOGICAL FRACTURE, UNSPECIFIED LOWER LEG SUBSEQUENT ENCOUNTER FOR FRACTURE WITH NONUNION
M80869P	OTHER OSTEOPOROSIS WITH CURRENT PATHOLOGICAL FRACTURE, UNSPECIFIED LOWER LEG SUBSEQUENT ENCOUNTER FOR FRACTURE WITH MALUNION
M80869S	OTHER OSTEOPOROSIS WITH CURRENT PATHOLOGICAL FRACTURE, UNSPECIFIED LOWER LEG SEQUELA
M80871A	OTHER OSTEOPOROSIS WITH CURRENT PATHOLOGICAL FRACTURE, RIGHT ANKLE AND FOOT INITIAL ENCOUNTER FOR FRACTURE
M80871D	OTHER OSTEOPOROSIS WITH CURRENT PATHOLOGICAL FRACTURE, RIGHT ANKLE AND FOOT SUBSEQUENT ENCOUNTER FOR FRACTURE WITH ROUTINE HEALING
M80871G	OTHER OSTEOPOROSIS WITH CURRENT PATHOLOGICAL FRACTURE, RIGHT ANKLE AND FOOT SUBSEQUENT ENCOUNTER FOR FRACTURE WITH DELAYED HEALING
M80871K	OTHER OSTEOPOROSIS WITH CURRENT PATHOLOGICAL FRACTURE, RIGHT ANKLE AND FOOT SUBSEQUENT ENCOUNTER FOR FRACTURE WITH NONUNION
M80871P	OTHER OSTEOPOROSIS WITH CURRENT PATHOLOGICAL FRACTURE, RIGHT ANKLE AND FOOT SUBSEQUENT ENCOUNTER FOR FRACTURE WITH MALUNION
M80871S	OTHER OSTEOPOROSIS WITH CURRENT PATHOLOGICAL FRACTURE, RIGHT ANKLE AND FOOT SEQUELA
M80872A	OTHER OSTEOPOROSIS WITH CURRENT PATHOLOGICAL FRACTURE, LEFT ANKLE AND FOOT INITIAL ENCOUNTER FOR FRACTURE
M80872D	OTHER OSTEOPOROSIS WITH CURRENT PATHOLOGICAL FRACTURE, LEFT ANKLE AND FOOT SUBSEQUENT ENCOUNTER FOR FRACTURE WITH ROUTINE HEALING

Step 4 (diagnosis of osteoporosis)	
Required diagnosis: 1	
Look back timeframe: 365 days	
ICD-10 Code	Description
M80872G	OTHER OSTEOPOROSIS WITH CURRENT PATHOLOGICAL FRACTURE, LEFT ANKLE AND FOOT SUBSEQUENT ENCOUNTER FOR FRACTURE WITH DELAYED HEALING
M80872K	OTHER OSTEOPOROSIS WITH CURRENT PATHOLOGICAL FRACTURE, LEFT ANKLE AND FOOT SUBSEQUENT ENCOUNTER FOR FRACTURE WITH NONUNION
M80872P	OTHER OSTEOPOROSIS WITH CURRENT PATHOLOGICAL FRACTURE, LEFT ANKLE AND FOOT SUBSEQUENT ENCOUNTER FOR FRACTURE WITH MALUNION
M80872S	OTHER OSTEOPOROSIS WITH CURRENT PATHOLOGICAL FRACTURE, LEFT ANKLE AND FOOT SEQUELA
M80879A	OTHER OSTEOPOROSIS WITH CURRENT PATHOLOGICAL FRACTURE, UNSPECIFIED ANKLE AND FOOT INITIAL ENCOUNTER FOR FRACTURE
M80879D	OTHER OSTEOPOROSIS WITH CURRENT PATHOLOGICAL FRACTURE, UNSPECIFIED ANKLE AND FOOT SUBSEQUENT ENCOUNTER FOR FRACTURE WITH ROUTINE HEALING
M80879G	OTHER OSTEOPOROSIS WITH CURRENT PATHOLOGICAL FRACTURE, UNSPECIFIED ANKLE AND FOOT SUBSEQUENT ENCOUNTER FOR FRACTURE WITH DELAYED HEALING
M80879K	OTHER OSTEOPOROSIS WITH CURRENT PATHOLOGICAL FRACTURE, UNSPECIFIED ANKLE AND FOOT SUBSEQUENT ENCOUNTER FOR FRACTURE WITH NONUNION
M80879P	OTHER OSTEOPOROSIS WITH CURRENT PATHOLOGICAL FRACTURE, UNSPECIFIED ANKLE AND FOOT SUBSEQUENT ENCOUNTER FOR FRACTURE WITH MALUNION
M80879S	OTHER OSTEOPOROSIS WITH CURRENT PATHOLOGICAL FRACTURE, UNSPECIFIED ANKLE AND FOOT SEQUELA
M8088XA	OTHER OSTEOPOROSIS WITH CURRENT PATHOLOGICAL FRACTURE, VERTEBRA(E) INITIAL ENCOUNTER FOR FRACTURE
M8088XD	OTHER OSTEOPOROSIS WITH CURRENT PATHOLOGICAL FRACTURE, VERTEBRA(E) SUBSEQUENT ENCOUNTER FOR FRACTURE WITH ROUTINE HEALING
M8088XG	OTHER OSTEOPOROSIS WITH CURRENT PATHOLOGICAL FRACTURE, VERTEBRA(E) SUBSEQUENT ENCOUNTER FOR FRACTURE WITH DELAYED HEALING
M8088XK	OTHER OSTEOPOROSIS WITH CURRENT PATHOLOGICAL FRACTURE, VERTEBRA(E) SUBSEQUENT ENCOUNTER FOR FRACTURE WITH NONUNION
M8088XP	OTHER OSTEOPOROSIS WITH CURRENT PATHOLOGICAL FRACTURE, VERTEBRA(E) SUBSEQUENT ENCOUNTER FOR FRACTURE WITH MALUNION
M8088XS	OTHER OSTEOPOROSIS WITH CURRENT PATHOLOGICAL FRACTURE, VERTEBRA(E) SEQUELA
M810	AGE-RELATED OSTEOPOROSIS WITHOUT CURRENT PATHOLOGICAL FRACTURE

Step 4 (diagnosis of osteoporosis)	
Required diagnosis: 1	
Look back timeframe: 365 days	
ICD-10 Code	Description
M816	LOCALIZED OSTEOPOROSIS [LEQUESNE]
M818	OTHER OSTEOPOROSIS WITHOUT CURRENT PATHOLOGICAL FRACTURE

Step 5 (history of a strong OATP-1B1 inhibitor)	
Required claims: 1	
Look back timeframe: 90 days	
Label Name	GCN
CYCLOSPORINE 100 MG CAPSULE	13910
CYCLOSPORINE 100 MG/ML	13917
CYCLOSPORINE 25 MG CAPSULE	13911
CYCLOSPORINE MODIFIED 100 MG	13919
CYCLOSPORINE MODIFIED 25 MG	13918
CYCLOSPORINE MODIFIED 50 MG	13916
GEMFIBROZIL 600 MG TABLET	25540
GENGRAF 100 MG CAPSULE	13919
GENGRAF 100 MG/ML SOLN	13917
GENGRAF 25 MG CAPSULE	13918
GENGRAF 50 MG CAPSULE	13916
LOPID 600 MG TABLET	25540
NEORAL 100 MG CAPSULE	13919
NEORAL 100 MG/ML SOLN	13917
NEORAL 25 MG CAPSULE	13918
SANDIMMUNE 100 MG CAPSULE	13910
SANDIMMUNE 100 MG/ML SOLN	08220
SANDIMMUNE 25 MG CAPSULE	13911



Orilissa (Elagolix)

Clinical Criteria References

1. 2019 ICD-10-CM Diagnosis Codes. 2019. Available at www.icd10data.com. Accessed on January 25, 2019.
2. Clinical Pharmacology [online database]. Tampa, FL: Elsevier/Gold Standard, Inc.; 2019. Available at www.clinicalpharmacology.com. Accessed on January 25, 2019.
3. Micromedex [online database]. Available at www.micromedexsolutions.com. Accessed on January 25, 2019.
4. Orilissa Prescribing Information. North Chicago, IL. AbbVie Inc. July 2018.
5. American College of Obstetricians and Gynecologists. Clinical Management Guidelines for Obstetrician-Gynecologists. Management of Endometriosis. 2010; 116(1):223-236.

Publication History

The Publication History records the publication iterations and revisions to this document. Notes for the *most current revision* are also provided in the **Revision Notes** on the first page of this document.

Publication Date	Notes
01/25/2019	<ul style="list-style-type: none">Initial publication and presentation to the DUR Board
03/29/2019	<ul style="list-style-type: none">Updated to include formulary statement (The listed GCNS may not be an indication of TX Medicaid Formulary coverage. To learn the current formulary coverage, visit TxVendorDrug.com/formulary/formulary-search.) on each 'Drug Requiring PA' table