

## Texas Prior Authorization Program Clinical Criteria

---

### Drug/Drug Class

## Acthar Gel

*This criteria was recommended for review by several MCOs to ensure appropriate and safe utilization*

### Clinical Criteria Information Included in this Document

#### Acthar Gel

- **Drugs requiring prior authorization:** the list of drugs requiring prior authorization for this clinical criteria
- **Prior authorization criteria logic:** a description of how the prior authorization request will be evaluated against the clinical criteria rules
- **Logic diagram:** a visual depiction of the clinical criteria logic
- **Supporting tables:** a collection of information associated with the steps within the criteria (diagnosis codes, procedure codes, and therapy codes)
- **References:** clinical publications and sources relevant to this clinical criteria

**Note:** Click the hyperlink to navigate directly to that section.

### Revision Notes

- Updated for presentation to DUR Board



## Acthar Gel

### Drugs Requiring Prior Authorization

*The listed GCNS may not be an indication of TX Medicaid Formulary coverage. To learn the current formulary coverage, visit [TxVendorDrug.com/formulary/formulary-search](http://TxVendorDrug.com/formulary/formulary-search).*

Drugs Requiring Prior Authorization	
Label Name	GCN
ACTHAR GEL 400 UNITS/5 ML VIAL	26016



## Acthar Gel

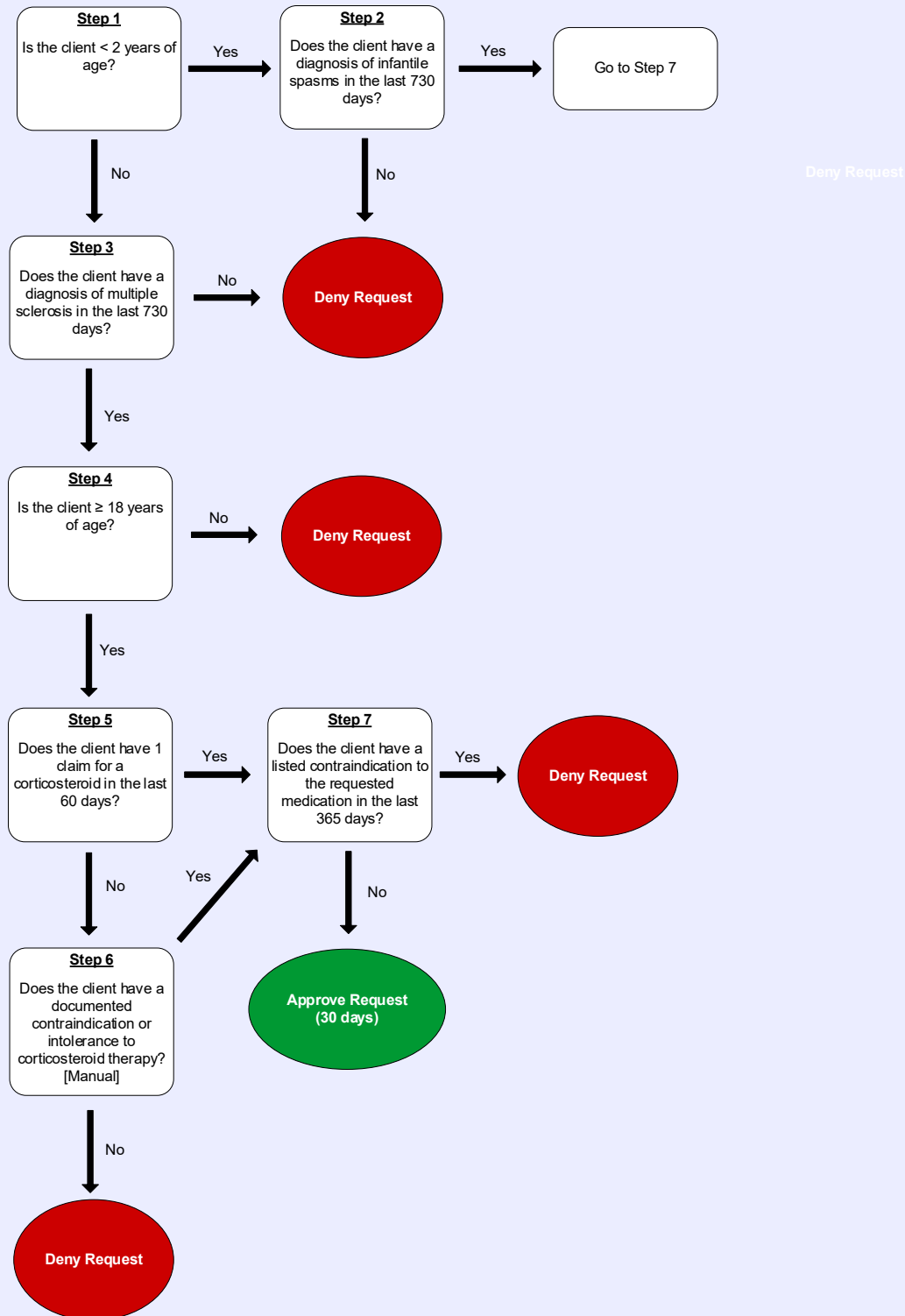
### Clinical Criteria Logic

1. Is the client < 2 years of age?  
 Yes – Go to #2  
 No – Go to #3
2. Does the client have a **diagnosis of infantile spasms** in the last 730 days?  
 Yes – Go to #7  
 No – Deny
3. Does the client have a **diagnosis of multiple sclerosis** in the last 730 days?  
 Yes – Go to #4  
 No – Deny
4. Is the client greater than or equal to ( $\geq$ ) 18 years of age?  
 Yes – Go to #5  
 No – Deny
5. Does the client have 1 claim for a **corticosteroid** in the last 60 days?  
 Yes – Go to #7  
 No – Go to #6
6. Does the client have a documented contraindication or intolerance to corticosteroid therapy? [Manual]  
 Yes – Go to #7  
 No – Deny
7. Does the client have a **diagnosis of scleroderma, osteoporosis, systemic fungal infection, ocular herpes simplex, peptic ulcer and/or heart failure** in the last 365 days?  
 Yes – Deny  
 No – Approve (30 days)



# Acthar Gel

## Clinical Criteria Logic Diagram





## Acthar Gel

## Clinical Criteria Supporting Tables

<b>Step 2 (diagnosis of infantile spasms)</b> <b>Required quantity: 1</b> <b>Look back timeframe: 730 days</b>	
ICD-10 Code	Description
G40821	EPILEPTIC SPASMS, NOT INTRACTABLE, WITH STATUS EPILEPTICUS
G40822	EPILEPTIC SPASMS, NOT INTRACTABLE, WITHOUT STATUS EPILEPTICUS
G40823	EPILEPTIC SPASMS, INTRACTABLE, WITH STATUS EPILEPTICUS
G40824	EPILEPTIC SPASMS, INTRACTABLE, WITHOUT STATUS EPILEPTICUS

<b>Step 3 (diagnosis of multiple sclerosis)</b> <b>Required quantity: 1</b> <b>Look back timeframe: 730 days</b>	
ICD-10	Description
G35	MULTIPLE SCLEROSIS

<b>Step 5 (history of corticosteroid therapy)</b> <b>Required quantity: 1</b> <b>Look back timeframe: 60 days</b>	
GCN	Label Name
26781	CORTEF 10 MG TABLET
26782	CORTEF 20 MG TABLET
26783	CORTEF 5 MG TABLET
27422	DEXAMETHASONE 0.5 MG TABLET
27400	DEXAMETHASONE 0.5 MG/5 ML ELX
27411	DEXAMETHASONE 0.5 MG/5 ML LIQ
27425	DEXAMETHASONE 0.75 MG TABLET
27424	DEXAMETHASONE 1 MG TABLET
27427	DEXAMETHASONE 1.5 MG TABLET
27426	DEXAMETHASONE 2 MG TABLET
27428	DEXAMETHASONE 4 MG TABLET
27429	DEXAMETHASONE 6 MG TABLET

<b>Step 5 (history of corticosteroid therapy)</b>	
<b>Required quantity: 1</b>	
<b>Look back timeframe: 60 days</b>	
<b>GCN</b>	<b>Label Name</b>
27412	DEXAMETHASONE INTENSOL 1 MG/ 1 ML
26781	HYDROCORTISONE 10 MG TABLET
26782	HYDROCORTISONE 20 MG TABLET
26783	HYDROCORTISONE 5 MG TABLET
27051	MEDROL 16 MG TABLET
27055	MEDROL 32 MG TABLET
27056	MEDROL 4 MG TABLET
27058	MEDROL 8 MG TABLET
27056	METHYLPREDNISOLONE 4 MG TABLET
27058	METHYLPREDNISOLONE 8 MG TABLET
27051	METHYLPREDNISOLONE 16 MG TABLET
27055	METHYLPREDNISOLONE 32 MG TABLET
26963	MILLIPRED 5 MG TABLET
99610	PREDNISOLONE 10 MG/5 ML SOLN
26800	PREDNISOLONE 15 MG/5 ML SOLN
33806	PREDNISOLONE 15 MG/5 ML SOLN
14565	PREDNISOLONE 20 MG/5 ML SOLN
09115	PREDNISOLONE 5 MG/5 ML SOLN
27108	PREDNISOLONE ODT 10 MG TABLET
27109	PREDNISOLONE ODT 15 MG TABLET
27114	PREDNISOLONE ODT 30 MG TABLET
27171	PREDNISON 1 MG TABLET
27172	PREDNISON 10 MG TABLET
27173	PREDNISON 2.5 MG TABLET
27174	PREDNISON 20 MG TABLET
27176	PREDNISON 5 MG TABLET
27160	PREDNISON 5 MG/5 ML SOLUTION
27161	PREDNISON 5 MG/5 ML SOLUTION
27177	PREDNISON 50 MG TABLET

<b>Step 7 (diagnosis of scleroderma, osteoporosis, systemic fungal infection, ocular herpes simplex, peptic ulcer and/or heart failure)</b>	
<b>Required quantity: 1</b>	
<b>Look back timeframe: 365 days</b>	
<b>ICD-10 Code</b>	<b>Description</b>
B0050	HERPESVIRAL OCULAR DISEASE, UNSPECIFIED
B0051	HERPESVIRAL IRIDOCYCLITIS
B0052	HERPESVIRAL KERATITIS
B0053	HERPESVIRAL CONJUNCTIVITIS
B0059	OTHER HERPESVIRAL DISEASE OF EYE
B380	ACUTE PULMONARY COCCIDIOIDOMYCOSIS
B381	CHRONIC PULMONARY COCCIDIOIDOMYCOSIS
B382	PULMONARY COCCIDIOIDOMYCOSIS, UNSPECIFIED
B383	CUTANEOUS COCCIDIOIDOMYCOSIS
B384	COCCIDIOIDOMYCOSIS MENINGITIS
B387	DISSEMINATED COCCIDIOIDOMYCOSIS
B3881	PROSTATIC COCCIDIOIDOMYCOSIS
B3889	OTHER FORMS OF COCCIDIOIDOMYCOSIS
B389	COCCIDIOIDOMYCOSIS, UNSPECIFIED
B390	ACUTE PULMONARY HISTOPLASMOSIS CAPSULATI
B391	CHRONIC PULMONARY HISTOPLASMOSIS CAPSULATI
B392	PULMONARY HISTOPLASMOSIS CAPSULATI, UNSPECIFIED
B393	DISSEMINATED HISTOPLASMOSIS CAPSULATI
B394	HISTOPLASMOSIS CAPSULATI, UNSPECIFIED
B395	HISTOPLASMOSIS DUBOISII
B399	HISTOPLASMOSIS, UNSPECIFIED
B400	ACUTE PULMONARY BLASTOMYCOSIS
B401	CHRONIC PULMONARY BLASTOMYCOSIS
B402	PULMONARY BLASTOMYCOSIS, UNSPECIFIED
B403	CUTANEOUS BLASTOMYCOSIS
B407	DISSEMINATED BLASTOMYCOSIS
B4081	BLASTOMYCOTIC MENINGOENCEPHALITIS
B4089	OTHER FORMS OF BLASTOMYCOSIS
B409	BLASTOMYCOSIS, UNSPECIFIED
B420	PULMONARY SPOROTRICHOSIS
B421	LYMPHOCUTANEOUS SPOROTRICHOSIS
B427	DISSEMINATED SPOROTRICHOSIS
B429	SPOROTRICHOSIS, UNSPECIFIED
B439	CHROMOMYCOSIS, UNSPECIFIED
B449	ASPERGILLOSIS, UNSPECIFIED

<b>Step 7 (diagnosis of scleroderma, osteoporosis, systemic fungal infection, ocular herpes simplex, peptic ulcer and/or heart failure)</b>	
<b>Required quantity: 1</b>	
<b>Look back timeframe: 365 days</b>	
<b>ICD-10 Code</b>	<b>Description</b>
B450	PULMONARY CRYPTOCOCCOSIS
B457	DISSEMINATED CRYPTOCOCCOSIS
B459	CRYPTOCOCCOSIS, UNSPECIFIED
B469	ZYGOMYCOSIS, UNSPECIFIED
B470	EUMYCETOMA
B481	RHINOSPORIDIOSIS
B482	ALLESCHERIASIS
B488	OTHER SPECIFIED MYCOSES
B49	UNSPECIFIED MYCOSIS
I2583	CORONARY ATHEROSCLEROSIS DUE TO LIPID RICH PLAQUE
I2584	CORONARY ATHEROSCLEROSIS DUE TO CALCIFIED CORONARY LESION
I2589	OTHER FORMS OF CHRONIC ISCHEMIC HEART DISEASE
I259	CHRONIC ISCHEMIC HEART DISEASE, UNSPECIFIED
I501	LEFT VENTRICULAR FAILURE
I5020	UNSPECIFIED SYSTOLIC (CONGESTIVE) HEART FAILURE
I5021	ACUTE SYSTOLIC (CONGESTIVE) HEART FAILURE
I5022	CHRONIC SYSTOLIC (CONGESTIVE) HEART FAILURE
I5023	ACUTE ON CHRONIC SYSTOLIC (CONGESTIVE) HEART FAILURE
I5030	UNSPECIFIED DIASTOLIC (CONGESTIVE) HEART FAILURE
I5031	ACUTE DIASTOLIC (CONGESTIVE) HEART FAILURE
I5032	CHRONIC DIASTOLIC (CONGESTIVE) HEART FAILURE
I5033	ACUTE ON CHRONIC DIASTOLIC (CONGESTIVE) HEART FAILURE
I5040	UNSPECIFIED COMBINED SYSTOLIC (CONGESTIVE) AND DIASTOLIC (CONGESTIVE) HEART FAILURE
I5041	ACUTE COMBINED SYSTOLIC (CONGESTIVE) AND DIASTOLIC (CONGESTIVE) HEART FAILURE
I5042	CHRONIC COMBINED SYSTOLIC (CONGESTIVE) AND DIASTOLIC (CONGESTIVE) HEART FAILURE
I5043	ACUTE ON CHRONIC COMBINED SYSTOLIC (CONGESTIVE) AND DIASTOLIC (CONGESTIVE) HEART FAILURE
I509	HEART FAILURE, UNSPECIFIED
K274	CHRONIC OR UNSPECIFIED PEPTIC ULCER, SITE UNSPECIFIED, WITH HEMORRHAGE
K275	CHRONIC OR UNSPECIFIED PEPTIC ULCER, SITE UNSPECIFIED, WITH PERFORATION
K276	CHRONIC OR UNSPECIFIED PEPTIC ULCER, SITE UNSPECIFIED, WITH BOTH HEMORRHAGE AND PERFORATION



<b>Step 7 (diagnosis of scleroderma, osteoporosis, systemic fungal infection, ocular herpes simplex, peptic ulcer and/or heart failure)</b>	
<b>Required quantity: 1</b>	
<b>Look back timeframe: 365 days</b>	
<b>ICD-10 Code</b>	<b>Description</b>
K277	CHRONIC PEPTIC ULCER, SITE UNSPECIFIED, WITHOUT HEMORRHAGE OR PERFORATION
K279	PEPTIC ULCER, SITE UNSPECIFIED, UNSPECIFIED AS ACUTE OR CHRONIC, WITHOUT HEMORRHAGE OR PERFORATION
M340	PROGRESSIVE SYSTEMIC SCLEROSIS
M341	CR(E)ST SYNDROME
M349	SYSTEMIC SCLEROSIS, UNSPECIFIED
M8000XA	AGE-RELATED OSTEOPOROSIS WITH CURRENT PATHOLOGICAL FRACTURE, UNSPECIFIED SITE INITIAL ENCOUNTER FOR FRACTURE
M8000XD	AGE-RELATED OSTEOPOROSIS WITH CURRENT PATHOLOGICAL FRACTURE, UNSPECIFIED SITE SUBSEQUENT ENCOUNTER FOR FRACTURE WITH ROUTINE HEALING
M8000XG	AGE-RELATED OSTEOPOROSIS WITH CURRENT PATHOLOGICAL FRACTURE, UNSPECIFIED SITE SUBSEQUENT ENCOUNTER FOR FRACTURE WITH DELAYED HEALING
M8000XK	AGE-SUBSEQUENT ENCOUNTER FOR FRACTURE WITH NONUNIONELATED OSTEOPOROSIS WITH CURRENT PATHOLOGICAL FRACTURE, UNSPECIFIED SITE
M8000XP	AGE-RELATED OSTEOPOROSIS WITH CURRENT PATHOLOGICAL FRACTURE, UNSPECIFIED SITE SUBSEQUENT ENCOUNTER FOR FRACTURE WITH MALUNION
M8000XS	AGE-RELATED OSTEOPOROSIS WITH CURRENT PATHOLOGICAL FRACTURE, UNSPECIFIED SITE SEQUELA
M80011A	AGE-RELATED OSTEOPOROSIS WITH CURRENT PATHOLOGICAL FRACTURE, RIGHT SHOULDER INITIAL ENCOUNTER FOR FRACTURE
M80011D	AGE-RELATED OSTEOPOROSIS WITH CURRENT PATHOLOGICAL FRACTURE, RIGHT SHOULDER SUBSEQUENT ENCOUNTER FOR FRACTURE WITH ROUTINE HEALING
M80011G	AGE-RELATED OSTEOPOROSIS WITH CURRENT PATHOLOGICAL FRACTURE, RIGHT SHOULDER SUBSEQUENT ENCOUNTER FOR FRACTURE WITH DELAYED HEALING
M80011K	AGE-RELATED OSTEOPOROSIS WITH CURRENT PATHOLOGICAL FRACTURE, RIGHT SHOULDER SUBSEQUENT ENCOUNTER FOR FRACTURE WITH NONUNION
M80011P	AGE-RELATED OSTEOPOROSIS WITH CURRENT PATHOLOGICAL FRACTURE, RIGHT SHOULDER SUBSEQUENT ENCOUNTER FOR FRACTURE WITH MALUNION
M80011S	AGE-RELATED OSTEOPOROSIS WITH CURRENT PATHOLOGICAL FRACTURE, RIGHT SHOULDER SEQUELA
M80012A	AGE-RELATED OSTEOPOROSIS WITH CURRENT PATHOLOGICAL FRACTURE, LEFT SHOULDER INITIAL ENCOUNTER FOR FRACTURE
M80012D	AGE-RELATED OSTEOPOROSIS WITH CURRENT PATHOLOGICAL FRACTURE, LEFT SHOULDER SUBSEQUENT ENCOUNTER FOR FRACTURE WITH ROUTINE HEALING

<b>Step 7 (diagnosis of scleroderma, osteoporosis, systemic fungal infection, ocular herpes simplex, peptic ulcer and/or heart failure)</b>	
<b>Required quantity: 1</b>	
<b>Look back timeframe: 365 days</b>	
<b>ICD-10 Code</b>	<b>Description</b>
M80012G	AGE-RELATED OSTEOPOROSIS WITH CURRENT PATHOLOGICAL FRACTURE, LEFT SHOULDER SUBSEQUENT ENCOUNTER FOR FRACTURE WITH DELAYED HEALING
M80012K	AGE-RELATED OSTEOPOROSIS WITH CURRENT PATHOLOGICAL FRACTURE, LEFT SHOULDER SUBSEQUENT ENCOUNTER FOR FRACTURE WITH NONUNION
M80012P	AGE-RELATED OSTEOPOROSIS WITH CURRENT PATHOLOGICAL FRACTURE, LEFT SHOULDER SUBSEQUENT ENCOUNTER FOR FRACTURE WITH MALUNION
M80012S	AGE-RELATED OSTEOPOROSIS WITH CURRENT PATHOLOGICAL FRACTURE, LEFT SHOULDER SEQUELA
M80019A	AGE-RELATED OSTEOPOROSIS WITH CURRENT PATHOLOGICAL FRACTURE, UNSPECIFIED SHOULDER INITIAL ENCOUNTER FOR FRACTURE
M80019D	AGE-RELATED OSTEOPOROSIS WITH CURRENT PATHOLOGICAL FRACTURE, UNSPECIFIED SHOULDER SUBSEQUENT ENCOUNTER FOR FRACTURE WITH ROUTINE HEALING
M80019G	AGE-RELATED OSTEOPOROSIS WITH CURRENT PATHOLOGICAL FRACTURE, UNSPECIFIED SHOULDER SUBSEQUENT ENCOUNTER FOR FRACTURE WITH DELAYED HEALING
M80019K	AGE-RELATED OSTEOPOROSIS WITH CURRENT PATHOLOGICAL FRACTURE, UNSPECIFIED SHOULDER SUBSEQUENT ENCOUNTER FOR FRACTURE WITH NONUNION
M80019P	AGE-RELATED OSTEOPOROSIS WITH CURRENT PATHOLOGICAL FRACTURE, UNSPECIFIED SHOULDER SUBSEQUENT ENCOUNTER FOR FRACTURE WITH MALUNION
M80019S	AGE-RELATED OSTEOPOROSIS WITH CURRENT PATHOLOGICAL FRACTURE, UNSPECIFIED SHOULDER SEQUELA
M80021A	AGE-RELATED OSTEOPOROSIS WITH CURRENT PATHOLOGICAL FRACTURE, HUMERUS INITIAL ENCOUNTER FOR FRACTURE
M80021D	AGE-RELATED OSTEOPOROSIS WITH CURRENT PATHOLOGICAL FRACTURE, HUMERUS SUBSEQUENT ENCOUNTER FOR FRACTURE WITH ROUTINE HEALING
M80021G	AGE-RELATED OSTEOPOROSIS WITH CURRENT PATHOLOGICAL FRACTURE, HUMERUS SUBSEQUENT ENCOUNTER FOR FRACTURE WITH DELAYED HEALING
M80021K	AGE-RELATED OSTEOPOROSIS WITH CURRENT PATHOLOGICAL FRACTURE, HUMERUS SUBSEQUENT ENCOUNTER FOR FRACTURE WITH NONUNION
M80021P	AGE-RELATED OSTEOPOROSIS WITH CURRENT PATHOLOGICAL FRACTURE, HUMERUS SUBSEQUENT ENCOUNTER FOR FRACTURE WITH MALUNION
M80021S	AGE-RELATED OSTEOPOROSIS WITH CURRENT PATHOLOGICAL FRACTURE, HUMERUS SEQUELA
M80022A	AGE-RELATED OSTEOPOROSIS WITH CURRENT PATHOLOGICAL FRACTURE, LEFT HUMERUS INITIAL ENCOUNTER FOR FRACTURE

<b>Step 7 (diagnosis of scleroderma, osteoporosis, systemic fungal infection, ocular herpes simplex, peptic ulcer and/or heart failure)</b>	
<b>Required quantity: 1</b>	
<b>Look back timeframe: 365 days</b>	
<b>ICD-10 Code</b>	<b>Description</b>
M80022D	AGE-RELATED OSTEOPOROSIS WITH CURRENT PATHOLOGICAL FRACTURE, LEFT HUMERUS SUBSEQUENT ENCOUNTER FOR FRACTURE WITH ROUTINE HEALING
M80022G	AGE-RELATED OSTEOPOROSIS WITH CURRENT PATHOLOGICAL FRACTURE, LEFT HUMERUS SUBSEQUENT ENCOUNTER FOR FRACTURE WITH DELAYED HEALING
M80022K	AGE-RELATED OSTEOPOROSIS WITH CURRENT PATHOLOGICAL FRACTURE, LEFT HUMERUS SUBSEQUENT ENCOUNTER FOR FRACTURE WITH NONUNION
M80022P	AGE-RELATED OSTEOPOROSIS WITH CURRENT PATHOLOGICAL FRACTURE, LEFT HUMERUS SUBSEQUENT ENCOUNTER FOR FRACTURE WITH MALUNION
M80022S	AGE-RELATED OSTEOPOROSIS WITH CURRENT PATHOLOGICAL FRACTURE, LEFT HUMERUS SEQUELA
M80029A	AGE-RELATED OSTEOPOROSIS WITH CURRENT PATHOLOGICAL FRACTURE, UNSPECIFIED HUMERUS INITIAL ENCOUNTER FOR FRACTURE
M80029D	AGE-RELATED OSTEOPOROSIS WITH CURRENT PATHOLOGICAL FRACTURE, UNSPECIFIED HUMERUS SUBSEQUENT ENCOUNTER FOR FRACTURE WITH ROUTINE HEALING
M80029G	AGE-RELATED OSTEOPOROSIS WITH CURRENT PATHOLOGICAL FRACTURE, UNSPECIFIED HUMERUS SUBSEQUENT ENCOUNTER FOR FRACTURE WITH DELAYED HEALING
M80029K	AGE-RELATED OSTEOPOROSIS WITH CURRENT PATHOLOGICAL FRACTURE, UNSPECIFIED HUMERUS SUBSEQUENT ENCOUNTER FOR FRACTURE WITH NONUNION
M80029P	AGE-RELATED OSTEOPOROSIS WITH CURRENT PATHOLOGICAL FRACTURE, UNSPECIFIED HUMERUS SUBSEQUENT ENCOUNTER FOR FRACTURE WITH MALUNION
M80029S	AGE-RELATED OSTEOPOROSIS WITH CURRENT PATHOLOGICAL FRACTURE, UNSPECIFIED HUMERUS SEQUELA
M80031A	AGE-RELATED OSTEOPOROSIS WITH CURRENT PATHOLOGICAL FRACTURE, RIGHT FOREARM INITIAL ENCOUNTER FOR FRACTURE
M80031D	AGE-RELATED OSTEOPOROSIS WITH CURRENT PATHOLOGICAL FRACTURE, RIGHT FOREARM SUBSEQUENT ENCOUNTER FOR FRACTURE WITH ROUTINE HEALING
M80031G	AGE-RELATED OSTEOPOROSIS WITH CURRENT PATHOLOGICAL FRACTURE, RIGHT FOREARM SUBSEQUENT ENCOUNTER FOR FRACTURE WITH DELAYED HEALING
M80031K	AGE-RELATED OSTEOPOROSIS WITH CURRENT PATHOLOGICAL FRACTURE, RIGHT FOREARM SUBSEQUENT ENCOUNTER FOR FRACTURE WITH NONUNION
M80031P	AGE-RELATED OSTEOPOROSIS WITH CURRENT PATHOLOGICAL FRACTURE, RIGHT FOREARM SUBSEQUENT ENCOUNTER FOR FRACTURE WITH MALUNION
M80031S	AGE-RELATED OSTEOPOROSIS WITH CURRENT PATHOLOGICAL FRACTURE, RIGHT FOREARM SEQUELA

<b>Step 7 (diagnosis of scleroderma, osteoporosis, systemic fungal infection, ocular herpes simplex, peptic ulcer and/or heart failure)</b>	
<b>Required quantity: 1</b>	
<b>Look back timeframe: 365 days</b>	
<b>ICD-10 Code</b>	<b>Description</b>
M80032A	AGE-RELATED OSTEOPOROSIS WITH CURRENT PATHOLOGICAL FRACTURE, LEFT FOREARM INITIAL ENCOUNTER FOR FRACTURE
M80032D	AGE-RELATED OSTEOPOROSIS WITH CURRENT PATHOLOGICAL FRACTURE, LEFT FOREARM SUBSEQUENT ENCOUNTER FOR FRACTURE WITH ROUTINE HEALING
M80032G	AGE-RELATED OSTEOPOROSIS WITH CURRENT PATHOLOGICAL FRACTURE, LEFT FOREARM SUBSEQUENT ENCOUNTER FOR FRACTURE WITH DELAYED HEALING
M80032K	AGE-RELATED OSTEOPOROSIS WITH CURRENT PATHOLOGICAL FRACTURE, LEFT FOREARM SUBSEQUENT ENCOUNTER FOR FRACTURE WITH NONUNION
M80032P	AGE-RELATED OSTEOPOROSIS WITH CURRENT PATHOLOGICAL FRACTURE, LEFT FOREARM SUBSEQUENT ENCOUNTER FOR FRACTURE WITH MALUNION
M80032S	AGE-RELATED OSTEOPOROSIS WITH CURRENT PATHOLOGICAL FRACTURE, LEFT FOREARM SEQUELA
M80039A	AGE-RELATED OSTEOPOROSIS INITIAL ENCOUNTER FOR FRACTURE WITH CURRENT PATHOLOGICAL FRACTURE, UNSPECIFIED FOREARM
M80039D	AGE-RELATED OSTEOPOROSIS WITH CURRENT PATHOLOGICAL FRACTURE, UNSPECIFIED FOREARM SUBSEQUENT ENCOUNTER FOR FRACTURE WITH ROUTINE HEALING
M80039G	AGE-RELATED OSTEOPOROSIS WITH CURRENT PATHOLOGICAL FRACTURE, UNSPECIFIED FOREARM SUBSEQUENT ENCOUNTER FOR FRACTURE WITH DELAYED HEALING
M80039K	AGE-RELATED OSTEOPOROSIS WITH CURRENT PATHOLOGICAL FRACTURE, UNSPECIFIED FOREARM SUBSEQUENT ENCOUNTER FOR FRACTURE WITH NONUNION
M80039P	AGE-RELATED OSTEOPOROSIS WITH CURRENT PATHOLOGICAL FRACTURE, UNSPECIFIED FOREARM SUBSEQUENT ENCOUNTER FOR FRACTURE WITH MALUNION
M80039S	AGE-RELATED OSTEOPOROSIS WITH CURRENT PATHOLOGICAL FRACTURE, UNSPECIFIED FOREARM SEQUELA
M80041A	AGE-RELATED OSTEOPOROSIS WITH CURRENT PATHOLOGICAL FRACTURE, RIGHT HAND INITIAL ENCOUNTER FOR FRACTURE
M80041D	AGE-RELATED OSTEOPOROSIS WITH CURRENT PATHOLOGICAL FRACTURE, RIGHT HAND SUBSEQUENT ENCOUNTER FOR FRACTURE WITH ROUTINE HEALING
M80041G	AGE-RELATED OSTEOPOROSIS WITH CURRENT PATHOLOGICAL FRACTURE, RIGHT HAND SUBSEQUENT ENCOUNTER FOR FRACTURE WITH DELAYED HEALING
M80041K	AGE-RELATED OSTEOPOROSIS WITH CURRENT PATHOLOGICAL FRACTURE, RIGHT HAND SUBSEQUENT ENCOUNTER FOR FRACTURE WITH NONUNION
M80041P	AGE-RELATED OSTEOPOROSIS WITH CURRENT PATHOLOGICAL FRACTURE, RIGHT HAND SUBSEQUENT ENCOUNTER FOR FRACTURE WITH MALUNION

<b>Step 7 (diagnosis of scleroderma, osteoporosis, systemic fungal infection, ocular herpes simplex, peptic ulcer and/or heart failure)</b>	
<b>Required quantity: 1</b>	
<b>Look back timeframe: 365 days</b>	
<b>ICD-10 Code</b>	<b>Description</b>
M80041S	AGE-RELATED OSTEOPOROSIS WITH CURRENT PATHOLOGICAL FRACTURE, RIGHT HAND SEQUELA
M80042A	AGE-RELATED OSTEOPOROSIS WITH CURRENT PATHOLOGICAL FRACTURE, LEFT HAND INITIAL ENCOUNTER FOR FRACTURE
M80042D	AGE-RELATED OSTEOPOROSIS WITH CURRENT PATHOLOGICAL FRACTURE, LEFT HAND SUBSEQUENT ENCOUNTER FOR FRACTURE WITH ROUTINE HEALING
M80042G	AGE-RELATED OSTEOPOROSIS WITH CURRENT PATHOLOGICAL FRACTURE, LEFT HAND SUBSEQUENT ENCOUNTER FOR FRACTURE WITH DELAYED HEALING
M80042K	AGE-RELATED OSTEOPOROSIS WITH CURRENT PATHOLOGICAL FRACTURE, LEFT HAND SUBSEQUENT ENCOUNTER FOR FRACTURE WITH NONUNION
M80042P	AGE-RELATED OSTEOPOROSIS WITH CURRENT PATHOLOGICAL FRACTURE, LEFT HAND SUBSEQUENT ENCOUNTER FOR FRACTURE WITH MALUNION
M80042S	AGE-RELATED OSTEOPOROSIS WITH CURRENT PATHOLOGICAL FRACTURE, LEFT HAND SEQUELA
M80049A	AGE-RELATED OSTEOPOROSIS WITH CURRENT PATHOLOGICAL FRACTURE, UNSPECIFIED HAND INITIAL ENCOUNTER FOR FRACTURE
M80049D	AGE-RELATED OSTEOPOROSIS WITH CURRENT PATHOLOGICAL FRACTURE, UNSPECIFIED HAND SUBSEQUENT ENCOUNTER FOR FRACTURE WITH ROUTINE HEALING
M80049G	AGE-RELATED OSTEOPOROSIS WITH CURRENT PATHOLOGICAL FRACTURE, UNSPECIFIED HAND SUBSEQUENT ENCOUNTER FOR FRACTURE WITH DELAYED HEALING
M80049K	AGE-RELATED OSTEOPOROSIS WITH CURRENT PATHOLOGICAL FRACTURE, UNSPECIFIED HAND SUBSEQUENT ENCOUNTER FOR FRACTURE WITH NONUNION
M80049P	AGE-RELATED OSTEOPOROSIS WITH CURRENT PATHOLOGICAL FRACTURE, UNSPECIFIED HAND SUBSEQUENT ENCOUNTER FOR FRACTURE WITH MALUNION
M80049S	AGE-RELATED OSTEOPOROSIS WITH CURRENT PATHOLOGICAL FRACTURE, UNSPECIFIED HAND SEQUELA
M80051A	AGE-RELATED OSTEOPOROSIS WITH CURRENT PATHOLOGICAL FRACTURE, RIGHT FEMUR INITIAL ENCOUNTER FOR FRACTURE
M80051D	AGE-RELATED OSTEOPOROSIS WITH CURRENT PATHOLOGICAL FRACTURE, RIGHT FEMUR SUBSEQUENT ENCOUNTER FOR FRACTURE WITH ROUTINE HEALING
M80051G	AGE-RELATED OSTEOPOROSIS WITH CURRENT PATHOLOGICAL FRACTURE, RIGHT FEMUR SUBSEQUENT ENCOUNTER FOR FRACTURE WITH DELAYED HEALING
M80051K	AGE-RELATED OSTEOPOROSIS WITH CURRENT PATHOLOGICAL FRACTURE, RIGHT FEMUR SUBSEQUENT ENCOUNTER FOR FRACTURE WITH NONUNION

<b>Step 7 (diagnosis of scleroderma, osteoporosis, systemic fungal infection, ocular herpes simplex, peptic ulcer and/or heart failure)</b>	
<b>Required quantity: 1</b>	
<b>Look back timeframe: 365 days</b>	
<b>ICD-10 Code</b>	<b>Description</b>
M80051P	AGE-RELATED OSTEOPOROSIS WITH CURRENT PATHOLOGICAL FRACTURE, RIGHT FEMUR SUBSEQUENT ENCOUNTER FOR FRACTURE WITH MALUNION
M80051S	AGE-RELATED OSTEOPOROSIS WITH CURRENT PATHOLOGICAL FRACTURE, RIGHT FEMUR SEQUELA
M80052A	AGE-RELATED OSTEOPOROSIS WITH CURRENT PATHOLOGICAL FRACTURE, LEFT FEMUR INITIAL ENCOUNTER FOR FRACTURE
M80052D	AGE-RELATED OSTEOPOROSIS WITH CURRENT PATHOLOGICAL FRACTURE, LEFT FEMUR SUBSEQUENT ENCOUNTER FOR FRACTURE WITH ROUTINE HEALING
M80052G	AGE-RELATED OSTEOPOROSIS WITH CURRENT PATHOLOGICAL FRACTURE, LEFT FEMUR SUBSEQUENT ENCOUNTER FOR FRACTURE WITH DELAYED HEALING
M80052K	AGE-RELATED OSTEOPOROSIS WITH CURRENT PATHOLOGICAL FRACTURE, LEFT FEMUR SUBSEQUENT ENCOUNTER FOR FRACTURE WITH NONUNION
M80052P	AGE-RELATED OSTEOPOROSIS WITH CURRENT PATHOLOGICAL FRACTURE, LEFT FEMUR SUBSEQUENT ENCOUNTER FOR FRACTURE WITH MALUNION
M80052S	AGE-RELATED OSTEOPOROSIS WITH CURRENT PATHOLOGICAL FRACTURE, LEFT FEMUR SEQUELA
M80059A	AGE-RELATED OSTEOPOROSIS WITH CURRENT PATHOLOGICAL FRACTURE, UNSPECIFIED FEMUR
M80059D	AGE-RELATED OSTEOPOROSIS WITH CURRENT PATHOLOGICAL FRACTURE, UNSPECIFIED FEMUR SUBSEQUENT ENCOUNTER FOR FRACTURE WITH ROUTINE HEALING
M80059G	AGE-RELATED OSTEOPOROSIS WITH CURRENT PATHOLOGICAL FRACTURE, UNSPECIFIED FEMUR SUBSEQUENT ENCOUNTER FOR FRACTURE WITH DELAYED HEALING
M80059K	AGE-RELATED OSTEOPOROSIS WITH CURRENT PATHOLOGICAL FRACTURE, UNSPECIFIED FEMUR SUBSEQUENT ENCOUNTER FOR FRACTURE WITH NONUNION
M80059P	AGE-RELATED SUBSEQUENT ENCOUNTER FOR FRACTURE OSTEOPOROSIS WITH CURRENT PATHOLOGICAL FRACTURE, UNSPECIFIED FEMUR WITH MALUNION
M80059S	AGE-RELATED OSTEOPOROSIS WITH CURRENT PATHOLOGICAL FRACTURE, UNSPECIFIED FEMUR SEQUELA
M80061A	AGE-RELATED OSTEOPOROSIS WITH CURRENT PATHOLOGICAL FRACTURE, RIGHT LOWER LEG INITIAL ENCOUNTER FOR FRACTURE
M80061D	AGE-RELATED OSTEOPOROSIS WITH CURRENT PATHOLOGICAL FRACTURE, RIGHT LOWER LEG SUBSEQUENT ENCOUNTER FOR FRACTURE WITH ROUTINE HEALING
M80061G	AGE-RELATED OSTEOPOROSIS WITH CURRENT PATHOLOGICAL FRACTURE, RIGHT LOWER LEG SUBSEQUENT ENCOUNTER FOR FRACTURE WITH DELAYED HEALING

<b>Step 7 (diagnosis of scleroderma, osteoporosis, systemic fungal infection, ocular herpes simplex, peptic ulcer and/or heart failure)</b>	
<b>Required quantity: 1</b>	
<b>Look back timeframe: 365 days</b>	
<b>ICD-10 Code</b>	<b>Description</b>
M80061K	AGE-RELATED OSTEOPOROSIS WITH CURRENT PATHOLOGICAL FRACTURE, RIGHT LOWER LEG SUBSEQUENT ENCOUNTER FOR FRACTURE WITH NONUNION
M80061P	AGE-RELATED OSTEOPOROSIS WITH CURRENT PATHOLOGICAL FRACTURE, RIGHT LOWER LEG SUBSEQUENT ENCOUNTER FOR FRACTURE WITH MALUNION
M80061S	AGE-RELATED OSTEOPOROSIS WITH CURRENT PATHOLOGICAL FRACTURE, RIGHT LOWER LEG
M80062A	AGE-RELATED OSTEOPOROSIS WITH CURRENT PATHOLOGICAL FRACTURE, LEFT LOWER LEG INITIAL ENCOUNTER FOR FRACTURE
M80062D	AGE-RELATED OSTEOPOROSIS WITH CURRENT PATHOLOGICAL FRACTURE, LEFT LOWER LE SUBSEQUENT ENCOUNTER FOR FRACTURE WITH ROUTINE HEALING G
M80062G	AGE-RELATED OSTEOPOROSIS WITH CURRENT PATHOLOGICAL FRACTURE, LEFT LOWER LEG SUBSEQUENT ENCOUNTER FOR FRACTURE WITH DELAYED HEALING
M80062K	AGE-RELATED OSTEOPOROSIS WITH CURRENT PATHOLOGICAL FRACTURE, LEFT LOWER LEG SUBSEQUENT ENCOUNTER FOR FRACTURE WITH NONUNION
M80062P	AGE-RELATED OSTEOPOROSIS WITH CURRENT PATHOLOGICAL FRACTURE, LEFT LOWER LEG SUBSEQUENT ENCOUNTER FOR FRACTURE WITH MALUNION
M80062S	AGE-RELATED OSTEOPOROSIS WITH CURRENT PATHOLOGICAL FRACTURE, LEFT LOWER LEG SEQUELA
M80069A	AGE-RELATED OSTEOPOROSIS WITH CURRENT PATHOLOGICAL FRACTURE, UNSPECIFIED LOWER LEG INITIAL ENCOUNTER FOR FRACTURE
M80069D	AGE-RELATED OSTEOPOROSIS WITH CURRENT PATHOLOGICAL FRACTURE, UNSPECIFIED LOWER LEG SUBSEQUENT ENCOUNTER FOR FRACTURE WITH ROUTINE HEALING
M80069G	AGE-RELATED OSTEOPOROSIS WITH CURRENT PATHOLOGICAL FRACTURE, UNSPECIFIED LOWER LEG SUBSEQUENT ENCOUNTER FOR FRACTURE WITH DELAYED HEALING
M80069K	AGE-RELATED OSTEOPOROSIS WITH CURRENT PATHOLOGICAL FRACTURE, UNSPECIFIED LOWER LEG SUBSEQUENT ENCOUNTER FOR FRACTURE WITH NONUNION
M80069P	AGE-RELATED OSTEOPOROSIS WITH CURRENT PATHOLOGICAL FRACTURE, UNSPECIFIED LOWER LEG SUBSEQUENT ENCOUNTER FOR FRACTURE WITH MALUNION
M80069S	AGE-RELATED OSTEOPOROSIS WITH CURRENT PATHOLOGICAL FRACTURE, UNSPECIFIED LOWER LEG SEQUELA
M80071A	AGE-RELATED OSTEOPOROSIS WITH CURRENT PATHOLOGICAL FRACTURE, RIGHT ANKLE AND FOOT INITIAL ENCOUNTER FOR FRACTURE
M80071D	AGE-RELATED OSTEOPOROSIS WITH CURRENT PATHOLOGICAL FRACTURE, RIGHT ANKLE AND FOOT SUBSEQUENT ENCOUNTER FOR FRACTURE WITH ROUTINE HEALING

**Step 7 (diagnosis of scleroderma, osteoporosis, systemic fungal infection, ocular herpes simplex, peptic ulcer and/or heart failure)**

**Required quantity: 1**

**Look back timeframe: 365 days**

<b>ICD-10 Code</b>	<b>Description</b>
M80071G	AGE-RELATED OSTEOPOROSIS WITH CURRENT PATHOLOGICAL FRACTURE, RIGHT ANKLE AND FOOT SUBSEQUENT ENCOUNTER FOR FRACTURE WITH DELAYED HEALING
M80071K	AGE-RELATED OSTEOPOROSIS WITH CURRENT PATHOLOGICAL FRACTURE, RIGHT ANKLE AND FOOT SUBSEQUENT ENCOUNTER FOR FRACTURE WITH NONUNION
M80071P	AGE-RELATED OSTEOPOROSIS WITH CURRENT PATHOLOGICAL FRACTURE, RIGHT ANKLE AND FOOT SUBSEQUENT ENCOUNTER FOR FRACTURE WITH MALUNION
M80071S	AGE-RELATED OSTEOPOROSIS WITH CURRENT PATHOLOGICAL FRACTURE, RIGHT ANKLE AND FOOT SEQUELA
M80072A	AGE-RELATED OSTEOPOROSIS WITH CURRENT PATHOLOGICAL FRACTURE, LEFT ANKLE AND FOOT INITIAL ENCOUNTER FOR FRACTURE
M80072D	AGE-RELATED OSTEOPOROSIS WITH CURRENT PATHOLOGICAL FRACTURE, LEFT ANKLE AND FOOT SUBSEQUENT ENCOUNTER FOR FRACTURE WITH ROUTINE HEALING
M80072G	AGE-RELATED OSTEOPOROSIS WITH CURRENT PATHOLOGICAL FRACTURE, LEFT ANKLE AND FOOT SUBSEQUENT ENCOUNTER FOR FRACTURE WITH DELAYED HEALING
M80072K	AGE-RELATED OSTEOPOROSIS WITH CURRENT PATHOLOGICAL FRACTURE, LEFT ANKLE AND FOOT SUBSEQUENT ENCOUNTER FOR FRACTURE WITH NONUNION
M80072P	AGE-RELATED OSTEOPOROSIS WITH CURRENT PATHOLOGICAL FRACTURE, LEFT ANKLE AND FOOT SUBSEQUENT ENCOUNTER FOR FRACTURE WITH MALUNION
M80072S	AGE-RELATED OSTEOPOROSIS WITH CURRENT PATHOLOGICAL FRACTURE, LEFT ANKLE AND FOOT SEQUELA
M80079A	AGE-RELATED OSTEOPOROSIS WITH CURRENT PATHOLOGICAL FRACTURE, UNSPECIFIED ANKLE AND FOOT INITIAL ENCOUNTER FOR FRACTURE
M80079D	AGE-RELATED OSTEOPOROSIS WITH CURRENT PATHOLOGICAL FRACTURE, UNSPECIFIED ANKLE AND FOOT SUBSEQUENT ENCOUNTER FOR FRACTURE WITH ROUTINE HEALING
M80079G	AGE-RELATED OSTEOPOROSIS WITH CURRENT PATHOLOGICAL FRACTURE, UNSPECIFIED ANKLE AND FOOT SUBSEQUENT ENCOUNTER FOR FRACTURE WITH DELAYED HEALING
M80079K	AGE-RELATED OSTEOPOROSIS WITH CURRENT PATHOLOGICAL FRACTURE, UNSPECIFIED ANKLE AND FOOT SUBSEQUENT ENCOUNTER FOR FRACTURE WITH NONUNION
M80079P	AGE-RELATED OSTEOPOROSIS WITH CURRENT PATHOLOGICAL FRACTURE, UNSPECIFIED ANKLE AND FOOT SUBSEQUENT ENCOUNTER FOR FRACTURE WITH MALUNION
M80079S	AGE-RELATED OSTEOPOROSIS WITH CURRENT PATHOLOGICAL FRACTURE, UNSPECIFIED ANKLE AND FOOT SEQUELA
M8008XA	AGE-RELATED OSTEOPOROSIS WITH CURRENT PATHOLOGICAL FRACTURE, VERTEBRA(E) INITIAL ENCOUNTER FOR FRACTURE



<b>Step 7 (diagnosis of scleroderma, osteoporosis, systemic fungal infection, ocular herpes simplex, peptic ulcer and/or heart failure)</b>	
<b>Required quantity: 1</b>	
<b>Look back timeframe: 365 days</b>	
<b>ICD-10 Code</b>	<b>Description</b>
M8008XD	AGE-RELATED OSTEOPOROSIS WITH CURRENT PATHOLOGICAL FRACTURE, VERTEBRA(E) SUBSEQUENT ENCOUNTER FOR FRACTURE WITH ROUTINE HEALING
M8008XG	AGE-RELATED OSTEOPOROSIS WITH CURRENT PATHOLOGICAL FRACTURE, VERTEBRA(E) SUBSEQUENT ENCOUNTER FOR FRACTURE WITH DELAYED HEALING
M8008XK	AGE-RELATED OSTEOPOROSIS WITH CURRENT PATHOLOGICAL FRACTURE, VERTEBRA(E) SUBSEQUENT ENCOUNTER FOR FRACTURE WITH NONUNION
M8008XP	AGE-RELATED OSTEOPOROSIS WITH CURRENT PATHOLOGICAL FRACTURE, VERTEBRA(E) SUBSEQUENT ENCOUNTER FOR FRACTURE WITH MALUNION
M8008XS	AGE-RELATED OSTEOPOROSIS WITH CURRENT PATHOLOGICAL FRACTURE, VERTEBRA(E) SEQUELA
M8080XA	OTHER OSTEOPOROSIS WITH CURRENT PATHOLOGICAL FRACTURE, UNSPECIFIED SITE INITIAL ENCOUNTER FOR FRACTURE
M8080XD	OTHER OSTEOPOROSIS WITH CURRENT PATHOLOGICAL FRACTURE, UNSPECIFIED SITE SUBSEQUENT ENCOUNTER FOR FRACTURE WITH ROUTINE HEALING
M8080XG	OTHER OSTEOPOROSIS WITH CURRENT PATHOLOGICAL FRACTURE, UNSPECIFIED SITE SUBSEQUENT ENCOUNTER FOR FRACTURE WITH DELAYED HEALING
M8080XK	OTHER OSTEOPOROSIS WITH CURRENT PATHOLOGICAL FRACTURE, UNSPECIFIED SITE SUBSEQUENT ENCOUNTER FOR FRACTURE WITH NONUNION
M8080XP	OTHER OSTEOPOROSIS WITH CURRENT PATHOLOGICAL FRACTURE, UNSPECIFIED SITE SUBSEQUENT ENCOUNTER FOR FRACTURE WITH MALUNION
M8080XS	OTHER OSTEOPOROSIS WITH CURRENT PATHOLOGICAL FRACTURE, UNSPECIFIED SITE SEQUELA
M80811A	OTHER OSTEOPOROSIS WITH CURRENT PATHOLOGICAL FRACTURE, RIGHT SHOULDER INITIAL ENCOUNTER FOR FRACTURE
M80811D	OTHER OSTEOPOROSIS WITH CURRENT PATHOLOGICAL FRACTURE, RIGHT SHOULDER SUBSEQUENT ENCOUNTER FOR FRACTURE WITH ROUTINE HEALING
M80811G	OTHER OSTEOPOROSIS WITH CURRENT PATHOLOGICAL FRACTURE, RIGHT SHOULDER SUBSEQUENT ENCOUNTER FOR FRACTURE WITH DELAYED HEALING
M80811K	OTHER OSTEOPOROSIS WITH CURRENT PATHOLOGICAL FRACTURE, RIGHT SHOULDER SUBSEQUENT ENCOUNTER FOR FRACTURE WITH NONUNION
M80811P	OTHER OSTEOPOROSIS WITH CURRENT PATHOLOGICAL FRACTURE, RIGHT SHOULDER SUBSEQUENT ENCOUNTER FOR FRACTURE WITH MALUNION
M80811S	OTHER OSTEOPOROSIS WITH CURRENT PATHOLOGICAL FRACTURE, RIGHT SHOULDER SEQUELA

<b>Step 7 (diagnosis of scleroderma, osteoporosis, systemic fungal infection, ocular herpes simplex, peptic ulcer and/or heart failure)</b>	
<b>Required quantity: 1</b>	
<b>Look back timeframe: 365 days</b>	
<b>ICD-10 Code</b>	<b>Description</b>
M80812A	OTHER OSTEOPOROSIS WITH CURRENT PATHOLOGICAL FRACTURE, LEFT SHOULDER INITIAL ENCOUNTER FOR FRACTURE
M80812D	OTHER OSTEOPOROSIS WITH CURRENT PATHOLOGICAL FRACTURE, LEFT SHOULDER SUBSEQUENT ENCOUNTER FOR FRACTURE WITH ROUTINE HEALING
M80812G	OTHER OSTEOPOROSIS WITH CURRENT PATHOLOGICAL FRACTURE, LEFT SHOULDER SUBSEQUENT ENCOUNTER FOR FRACTURE WITH DELAYED HEALING
M80812K	OTHER OSTEOPOROSIS WITH CURRENT PATHOLOGICAL FRACTURE, LEFT SHOULDER SUBSEQUENT ENCOUNTER FOR FRACTURE WITH NONUNION
M80812P	OTHER OSTEOPOROSIS WITH CURRENT PATHOLOGICAL FRACTURE, LEFT SHOULDER SUBSEQUENT ENCOUNTER FOR FRACTURE WITH MALUNION
M80812S	OTHER OSTEOPOROSIS WITH CURRENT PATHOLOGICAL FRACTURE, LEFT SHOULDER SEQUELA
M80819A	OTHER OSTEOPOROSIS WITH CURRENT PATHOLOGICAL FRACTURE, UNSPECIFIED SHOULDER INITIAL ENCOUNTER FOR FRACTURE
M80819D	OTHER OSTEOPOROSIS WITH CURRENT PATHOLOGICAL FRACTURE, UNSPECIFIED SHOULDER SUBSEQUENT ENCOUNTER FOR FRACTURE WITH ROUTINE HEALING
M80819G	OTHER OSTEOPOROSIS WITH CURRENT PATHOLOGICAL FRACTURE, UNSPECIFIED SHOULDER SUBSEQUENT ENCOUNTER FOR FRACTURE WITH DELAYED HEALING
M80819K	OTHER OSTEOPOROSIS WITH CURRENT PATHOLOGICAL FRACTURE, UNSPECIFIED SHOULDER SUBSEQUENT ENCOUNTER FOR FRACTURE WITH NONUNION
M80819P	OTHER OSTEOPOROSIS WITH CURRENT PATHOLOGICAL FRACTURE, UNSPECIFIED SHOULDER SUBSEQUENT ENCOUNTER FOR FRACTURE WITH MALUNION
M80819S	OTHER OSTEOPOROSIS WITH CURRENT PATHOLOGICAL FRACTURE, UNSPECIFIED SHOULDER SEQUELA
M80821A	OTHER OSTEOPOROSIS WITH CURRENT PATHOLOGICAL FRACTURE, RIGHT HUMERUS INITIAL ENCOUNTER FOR FRACTURE
M80821D	OTHER OSTEOPOROSIS WITH CURRENT PATHOLOGICAL FRACTURE, RIGHT HUMERUS SUBSEQUENT ENCOUNTER FOR FRACTURE WITH ROUTINE HEALING
M80821G	OTHER OSTEOPOROSIS WITH CURRENT PATHOLOGICAL FRACTURE, RIGHT HUMERUS SUBSEQUENT ENCOUNTER FOR FRACTURE WITH DELAYED HEALING
M80821K	OTHER OSTEOPOROSIS WITH CURRENT PATHOLOGICAL FRACTURE, RIGHT HUMERUS SUBSEQUENT ENCOUNTER FOR FRACTURE WITH NONUNION
M80821P	OTHER OSTEOPOROSIS WITH CURRENT PATHOLOGICAL FRACTURE, RIGHT HUMERUS SUBSEQUENT ENCOUNTER FOR FRACTURE WITH MALUNION

<b>Step 7 (diagnosis of scleroderma, osteoporosis, systemic fungal infection, ocular herpes simplex, peptic ulcer and/or heart failure)</b>	
<b>Required quantity: 1</b>	
<b>Look back timeframe: 365 days</b>	
<b>ICD-10 Code</b>	<b>Description</b>
M80821S	OTHER OSTEOPOROSIS WITH CURRENT PATHOLOGICAL FRACTURE, RIGHT HUMERUS SEQUELA
M80822A	OTHER OSTEOPOROSIS WITH CURRENT PATHOLOGICAL FRACTURE, LEFT HUMERUS INITIAL ENCOUNTER FOR FRACTURE
M80822D	OTHER OSTEOPOROSIS WITH CURRENT PATHOLOGICAL FRACTURE, LEFT HUMERUS SUBSEQUENT ENCOUNTER FOR FRACTURE WITH ROUTINE HEALING
M80822G	OTHER OSTEOPOROSIS WITH CURRENT PATHOLOGICAL FRACTURE, LEFT HUMERUS SUBSEQUENT ENCOUNTER FOR FRACTURE WITH DELAYED HEALING
M80822K	OTHER OSTEOPOROSIS WITH CURRENT PATHOLOGICAL FRACTURE, LEFT HUMERUS SUBSEQUENT ENCOUNTER FOR FRACTURE WITH NONUNION
M80822P	OTHER OSTEOPOROSIS WITH CURRENT PATHOLOGICAL FRACTURE, LEFT HUMERUS SUBSEQUENT ENCOUNTER FOR FRACTURE WITH MALUNION
M80822S	OTHER OSTEOPOROSIS WITH CURRENT PATHOLOGICAL FRACTURE, LEFT HUMERUS SEQUELA
M80829A	OTHER OSTEOPOROSIS WITH CURRENT PATHOLOGICAL FRACTURE, UNSPECIFIED HUMERUS INITIAL ENCOUNTER FOR FRACTURE
M80829D	OTHER OSTEOPOROSIS WITH CURRENT PATHOLOGICAL FRACTURE, UNSPECIFIED HUMERUS SUBSEQUENT ENCOUNTER FOR FRACTURE WITH ROUTINE HEALING
M80829G	OTHER OSTEOPOROSIS WITH CURRENT PATHOLOGICAL FRACTURE, UNSPECIFIED HUMERUS SUBSEQUENT ENCOUNTER FOR FRACTURE WITH DELAYED HEALING
M80829K	OTHER OSTEOPOROSIS WITH CURRENT PATHOLOGICAL FRACTURE, UNSPECIFIED HUMERUS SUBSEQUENT ENCOUNTER FOR FRACTURE WITH NONUNION
M80829P	OTHER OSTEOPOROSIS WITH CURRENT PATHOLOGICAL FRACTURE, UNSPECIFIED HUMERUS SUBSEQUENT ENCOUNTER FOR FRACTURE WITH MALUNION
M80829S	OTHER OSTEOPOROSIS WITH CURRENT PATHOLOGICAL FRACTURE, UNSPECIFIED HUMERUS SEQUELA
M80831A	OTHER OSTEOPOROSIS WITH CURRENT PATHOLOGICAL FRACTURE, RIGHT FOREARM INITIAL ENCOUNTER FOR FRACTURE
M80831D	OTHER OSTEOPOROSIS WITH CURRENT PATHOLOGICAL FRACTURE, RIGHT FOREARM SUBSEQUENT ENCOUNTER FOR FRACTURE WITH ROUTINE HEALING
M80831G	OTHER OSTEOPOROSIS WITH CURRENT PATHOLOGICAL FRACTURE, RIGHT FOREARM SUBSEQUENT ENCOUNTER FOR FRACTURE WITH DELAYED HEALING
M80831K	OTHER OSTEOPOROSIS WITH CURRENT PATHOLOGICAL FRACTURE, RIGHT FOREARM SUBSEQUENT ENCOUNTER FOR FRACTURE WITH NONUNION

<b>Step 7 (diagnosis of scleroderma, osteoporosis, systemic fungal infection, ocular herpes simplex, peptic ulcer and/or heart failure)</b>	
<b>Required quantity: 1</b>	
<b>Look back timeframe: 365 days</b>	
<b>ICD-10 Code</b>	<b>Description</b>
M80831P	OTHER OSTEOPOROSIS WITH CURRENT PATHOLOGICAL FRACTURE, RIGHT FOREARM SUBSEQUENT ENCOUNTER FOR FRACTURE WITH MALUNION
M80831S	OTHER OSTEOPOROSIS WITH CURRENT PATHOLOGICAL FRACTURE, RIGHT FOREARM SEQUELA
M80832A	OTHER OSTEOPOROSIS WITH CURRENT PATHOLOGICAL FRACTURE, LEFT FOREARM INITIAL ENCOUNTER FOR FRACTURE
M80832D	OTHER OSTEOPOROSIS WITH CURRENT PATHOLOGICAL FRACTURE, LEFT FOREARM SUBSEQUENT ENCOUNTER FOR FRACTURE WITH ROUTINE HEALING
M80832G	OTHER OSTEOPOROSIS WITH CURRENT PATHOLOGICAL FRACTURE, LEFT FOREARM SUBSEQUENT ENCOUNTER FOR FRACTURE WITH DELAYED HEALING
M80832K	OTHER OSTEOPOROSIS WITH CURRENT PATHOLOGICAL FRACTURE, LEFT FOREARM SUBSEQUENT ENCOUNTER FOR FRACTURE WITH NONUNION
M80832P	OTHER OSTEOPOROSIS WITH CURRENT PATHOLOGICAL FRACTURE, LEFT FOREARM SUBSEQUENT ENCOUNTER FOR FRACTURE WITH MALUNION
M80832S	OTHER OSTEOPOROSIS WITH CURRENT PATHOLOGICAL FRACTURE, LEFT FOREARM SEQUELA
M80839A	OTHER OSTEOPOROSIS WITH CURRENT PATHOLOGICAL FRACTURE, UNSPECIFIED FOREARM INITIAL ENCOUNTER FOR FRACTURE
M80839D	OTHER OSTEOPOROSIS WITH CURRENT PATHOLOGICAL FRACTURE, UNSPECIFIED FOREARM SUBSEQUENT ENCOUNTER FOR FRACTURE WITH ROUTINE HEALING
M80839G	OTHER OSTEOPOROSIS WITH CURRENT PATHOLOGICAL FRACTURE, UNSPECIFIED FOREARM SUBSEQUENT ENCOUNTER FOR FRACTURE WITH DELAYED HEALING
M80839K	OTHER OSTEOPOROSIS WITH CURRENT PATHOLOGICAL FRACTURE, UNSPECIFIED FOREARM SUBSEQUENT ENCOUNTER FOR FRACTURE WITH NONUNION
M80839P	OTHER OSTEOPOROSIS WITH CURRENT PATHOLOGICAL FRACTURE, UNSPECIFIED FOREARM SUBSEQUENT ENCOUNTER FOR FRACTURE WITH MALUNION
M80839S	OTHER OSTEOPOROSIS WITH CURRENT PATHOLOGICAL FRACTURE, UNSPECIFIED FOREARM SEQUELA
M80841A	OTHER OSTEOPOROSIS WITH CURRENT PATHOLOGICAL FRACTURE, RIGHT HAND INITIAL ENCOUNTER FOR FRACTURE
M80841D	OTHER OSTEOPOROSIS WITH CURRENT PATHOLOGICAL FRACTURE, RIGHT HAND SUBSEQUENT ENCOUNTER FOR FRACTURE WITH ROUTINE HEALING
M80841G	OTHER OSTEOPOROSIS WITH CURRENT PATHOLOGICAL FRACTURE, RIGHT HAND SUBSEQUENT ENCOUNTER FOR FRACTURE WITH DELAYED HEALING

<b>Step 7 (diagnosis of scleroderma, osteoporosis, systemic fungal infection, ocular herpes simplex, peptic ulcer and/or heart failure)</b>	
<b>Required quantity: 1</b>	
<b>Look back timeframe: 365 days</b>	
<b>ICD-10 Code</b>	<b>Description</b>
M80841K	OTHER OSTEOPOROSIS WITH CURRENT PATHOLOGICAL FRACTURE, RIGHT HAND SUBSEQUENT ENCOUNTER FOR FRACTURE WITH NONUNION
M80841P	OTHER OSTEOPOROSIS WITH CURRENT PATHOLOGICAL FRACTURE, RIGHT HAND SUBSEQUENT ENCOUNTER FOR FRACTURE WITH MALUNION
M80841S	OTHER OSTEOPOROSIS WITH CURRENT PATHOLOGICAL FRACTURE, RIGHT HAND SEQUELA
M80842A	OTHER OSTEOPOROSIS WITH CURRENT PATHOLOGICAL FRACTURE, LEFT HAND INITIAL ENCOUNTER FOR FRACTURE
M80842D	OTHER OSTEOPOROSIS WITH CURRENT PATHOLOGICAL FRACTURE, LEFT HAND SUBSEQUENT ENCOUNTER FOR FRACTURE WITH ROUTINE HEALING
M80842G	OTHER OSTEOPOROSIS WITH CURRENT PATHOLOGICAL FRACTURE, LEFT HAND SUBSEQUENT ENCOUNTER FOR FRACTURE WITH DELAYED HEALING
M80842K	OTHER OSTEOPOROSIS WITH CURRENT PATHOLOGICAL FRACTURE, LEFT HAND SUBSEQUENT ENCOUNTER FOR FRACTURE WITH NONUNION
M80842P	OTHER OSTEOPOROSIS WITH CURRENT PATHOLOGICAL FRACTURE, LEFT HAND SUBSEQUENT ENCOUNTER FOR FRACTURE WITH MALUNION
M80842S	OTHER OSTEOPOROSIS WITH CURRENT PATHOLOGICAL FRACTURE, LEFT HAND SEQUELA
M80849A	OTHER OSTEOPOROSIS WITH CURRENT PATHOLOGICAL FRACTURE, UNSPECIFIED HAND INITIAL ENCOUNTER FOR FRACTURE
M80849D	OTHER OSTEOPOROSIS WITH CURRENT PATHOLOGICAL FRACTURE, UNSPECIFIED HAND SUBSEQUENT ENCOUNTER FOR FRACTURE WITH ROUTINE HEALING
M80849G	OTHER OSTEOPOROSIS WITH CURRENT PATHOLOGICAL FRACTURE, UNSPECIFIED HAND SUBSEQUENT ENCOUNTER FOR FRACTURE WITH DELAYED HEALING
M80849K	OTHER OSTEOPOROSIS WITH CURRENT PATHOLOGICAL FRACTURE, UNSPECIFIED HAND SUBSEQUENT ENCOUNTER FOR FRACTURE WITH NONUNION
M80849P	OTHER OSTEOPOROSIS WITH CURRENT PATHOLOGICAL FRACTURE, UNSPECIFIED HAND SUBSEQUENT ENCOUNTER FOR FRACTURE WITH MALUNION
M80849S	OTHER OSTEOPOROSIS WITH CURRENT PATHOLOGICAL FRACTURE, UNSPECIFIED HAND SEQUELA
M80851A	OTHER OSTEOPOROSIS WITH CURRENT PATHOLOGICAL FRACTURE, RIGHT FEMUR INITIAL ENCOUNTER FOR FRACTURE
M80851D	OTHER OSTEOPOROSIS WITH CURRENT PATHOLOGICAL FRACTURE, RIGHT FEMUR SUBSEQUENT ENCOUNTER FOR FRACTURE WITH ROUTINE HEALING

<b>Step 7 (diagnosis of scleroderma, osteoporosis, systemic fungal infection, ocular herpes simplex, peptic ulcer and/or heart failure)</b>	
<b>Required quantity: 1</b>	
<b>Look back timeframe: 365 days</b>	
<b>ICD-10 Code</b>	<b>Description</b>
M80851G	OTHER OSTEOPOROSIS WITH CURRENT PATHOLOGICAL FRACTURE, RIGHT FEMUR SUBSEQUENT ENCOUNTER FOR FRACTURE WITH DELAYED HEALING
M80851K	OTHER OSTEOPOROSIS WITH CURRENT PATHOLOGICAL FRACTURE, RIGHT FEMUR SUBSEQUENT ENCOUNTER FOR FRACTURE WITH NONUNION
M80851P	OTHER OSTEOPOROSIS WITH CURRENT PATHOLOGICAL FRACTURE, RIGHT FEMUR SUBSEQUENT ENCOUNTER FOR FRACTURE WITH MALUNION
M80851S	OTHER OSTEOPOROSIS WITH CURRENT PATHOLOGICAL FRACTURE, RIGHT FEMUR SEQUELA
M80852A	OTHER OSTEOPOROSIS WITH CURRENT PATHOLOGICAL FRACTURE, LEFT FEMUR INITIAL ENCOUNTER FOR FRACTURE
M80852D	OTHER OSTEOPOROSIS WITH CURRENT PATHOLOGICAL FRACTURE, LEFT FEMUR SUBSEQUENT ENCOUNTER FOR FRACTURE WITH ROUTINE HEALING
M80852G	OTHER OSTEOPOROSIS WITH CURRENT PATHOLOGICAL FRACTURE, LEFT FEMUR SUBSEQUENT ENCOUNTER FOR FRACTURE WITH DELAYED HEALING
M80852K	OTHER OSTEOPOROSIS WITH CURRENT PATHOLOGICAL FRACTURE, LEFT FEMUR SUBSEQUENT ENCOUNTER FOR FRACTURE WITH NONUNION
M80852P	OTHER OSTEOPOROSIS WITH CURRENT PATHOLOGICAL FRACTURE, LEFT FEMUR SUBSEQUENT ENCOUNTER FOR FRACTURE WITH MALUNION
M80852S	OTHER OSTEOPOROSIS WITH CURRENT PATHOLOGICAL FRACTURE, LEFT FEMUR SEQUELA
M80859A	OTHER OSTEOPOROSIS WITH CURRENT PATHOLOGICAL FRACTURE, UNSPECIFIED FEMUR INITIAL ENCOUNTER FOR FRACTURE
M80859D	OTHER OSTEOPOROSIS WITH CURRENT PATHOLOGICAL FRACTURE, UNSPECIFIED FEMUR SUBSEQUENT ENCOUNTER FOR FRACTURE WITH ROUTINE HEALING
M80859G	OTHER OSTEOPOROSIS WITH CURRENT PATHOLOGICAL FRACTURE, UNSPECIFIED FEMUR SUBSEQUENT ENCOUNTER FOR FRACTURE WITH DELAYED HEALING
M80859K	OTHER OSTEOPOROSIS WITH CURRENT PATHOLOGICAL FRACTURE, UNSPECIFIED FEMUR SUBSEQUENT ENCOUNTER FOR FRACTURE WITH NONUNION
M80859P	OTHER OSTEOPOROSIS WITH CURRENT PATHOLOGICAL FRACTURE, UNSPECIFIED FEMUR SUBSEQUENT ENCOUNTER FOR FRACTURE WITH MALUNION
M80859S	OTHER OSTEOPOROSIS WITH CURRENT PATHOLOGICAL FRACTURE, UNSPECIFIED FEMUR SEQUELA
M80861A	OTHER OSTEOPOROSIS WITH CURRENT PATHOLOGICAL FRACTURE, RIGHT LOWER LEG INITIAL ENCOUNTER FOR FRACTURE

<b>Step 7 (diagnosis of scleroderma, osteoporosis, systemic fungal infection, ocular herpes simplex, peptic ulcer and/or heart failure)</b>	
<b>Required quantity: 1</b>	
<b>Look back timeframe: 365 days</b>	
<b>ICD-10 Code</b>	<b>Description</b>
M80861D	OTHER OSTEOPOROSIS WITH CURRENT PATHOLOGICAL FRACTURE, RIGHT LOWER LEG SUBSEQUENT ENCOUNTER FOR FRACTURE WITH ROUTINE HEALING
M80861G	OTHER OSTEOPOROSIS WITH CURRENT PATHOLOGICAL FRACTURE, RIGHT LOWER LEG SUBSEQUENT ENCOUNTER FOR FRACTURE WITH DELAYED HEALING
M80861K	OTHER OSTEOPOROSIS WITH CURRENT PATHOLOGICAL FRACTURE, RIGHT LOWER LEG SUBSEQUENT ENCOUNTER FOR FRACTURE WITH NONUNION
M80861P	OTHER OSTEOPOROSIS WITH CURRENT PATHOLOGICAL FRACTURE, RIGHT LOWER LEG SUBSEQUENT ENCOUNTER FOR FRACTURE WITH MALUNION
M80861S	OTHER OSTEOPOROSIS WITH CURRENT PATHOLOGICAL FRACTURE, RIGHT LOWER LEG SEQUELA
M80862A	OTHER OSTEOPOROSIS WITH CURRENT PATHOLOGICAL FRACTURE, LEFT LOWER LEG INITIAL ENCOUNTER FOR FRACTURE
M80862D	OTHER OSTEOPOROSIS WITH CURRENT PATHOLOGICAL FRACTURE, LEFT LOWER LEG SUBSEQUENT ENCOUNTER FOR FRACTURE WITH ROUTINE HEALING
M80862G	OTHER OSTEOPOROSIS WITH CURRENT PATHOLOGICAL FRACTURE, LEFT LOWER LEG SUBSEQUENT ENCOUNTER FOR FRACTURE WITH DELAYED HEALING
M80862K	OTHER OSTEOPOROSIS WITH CURRENT PATHOLOGICAL FRACTURE, LEFT LOWER LEG SUBSEQUENT ENCOUNTER FOR FRACTURE WITH NONUNION
M80862P	OTHER OSTEOPOROSIS WITH CURRENT PATHOLOGICAL FRACTURE, LEFT LOWER LEG SUBSEQUENT ENCOUNTER FOR FRACTURE WITH MALUNION
M80862S	OTHER OSTEOPOROSIS WITH CURRENT PATHOLOGICAL FRACTURE, LEFT LOWER LEG SEQUELA
M80869A	OTHER OSTEOPOROSIS WITH CURRENT PATHOLOGICAL FRACTURE, UNSPECIFIED LOWER LEG INITIAL ENCOUNTER FOR FRACTURE
M80869D	OTHER OSTEOPOROSIS WITH CURRENT PATHOLOGICAL FRACTURE, UNSPECIFIED LOWER LEG SUBSEQUENT ENCOUNTER FOR FRACTURE WITH ROUTINE HEALING
M80869G	OTHER OSTEOPOROSIS WITH CURRENT PATHOLOGICAL FRACTURE, UNSPECIFIED LOWER LEG SUBSEQUENT ENCOUNTER FOR FRACTURE WITH DELAYED HEALING
M80869K	OTHER OSTEOPOROSIS WITH CURRENT PATHOLOGICAL FRACTURE, UNSPECIFIED LOWER LEG SUBSEQUENT ENCOUNTER FOR FRACTURE WITH NONUNION
M80869P	OTHER OSTEOPOROSIS WITH CURRENT PATHOLOGICAL FRACTURE, UNSPECIFIED LOWER LEG SUBSEQUENT ENCOUNTER FOR FRACTURE WITH MALUNION
M80869S	OTHER OSTEOPOROSIS WITH CURRENT PATHOLOGICAL FRACTURE, UNSPECIFIED LOWER LEG SEQUELA

<b>Step 7 (diagnosis of scleroderma, osteoporosis, systemic fungal infection, ocular herpes simplex, peptic ulcer and/or heart failure)</b>	
<b>Required quantity: 1</b>	
<b>Look back timeframe: 365 days</b>	
<b>ICD-10 Code</b>	<b>Description</b>
M80871A	OTHER OSTEOPOROSIS WITH CURRENT PATHOLOGICAL FRACTURE, RIGHT ANKLE AND FOOT INITIAL ENCOUNTER FOR FRACTURE
M80871D	OTHER OSTEOPOROSIS WITH CURRENT PATHOLOGICAL FRACTURE, RIGHT ANKLE AND FOOT SUBSEQUENT ENCOUNTER FOR FRACTURE WITH ROUTINE HEALING
M80871G	OTHER OSTEOPOROSIS WITH CURRENT PATHOLOGICAL FRACTURE, RIGHT ANKLE AND FOOT SUBSEQUENT ENCOUNTER FOR FRACTURE WITH DELAYED HEALING
M80871K	OTHER OSTEOPOROSIS WITH CURRENT PATHOLOGICAL FRACTURE, RIGHT ANKLE AND FOOT SUBSEQUENT ENCOUNTER FOR FRACTURE WITH NONUNION
M80871P	OTHER OSTEOPOROSIS WITH CURRENT PATHOLOGICAL FRACTURE, RIGHT ANKLE AND FOOT SUBSEQUENT ENCOUNTER FOR FRACTURE WITH MALUNION
M80871S	OTHER OSTEOPOROSIS WITH CURRENT PATHOLOGICAL FRACTURE, RIGHT ANKLE AND FOOT SEQUELA
M80872A	OTHER OSTEOPOROSIS WITH CURRENT PATHOLOGICAL FRACTURE, LEFT ANKLE AND FOOT INITIAL ENCOUNTER FOR FRACTURE
M80872D	OTHER OSTEOPOROSIS WITH CURRENT PATHOLOGICAL FRACTURE, LEFT ANKLE AND FOOT SUBSEQUENT ENCOUNTER FOR FRACTURE WITH ROUTINE HEALING
M80872G	OTHER OSTEOPOROSIS WITH CURRENT PATHOLOGICAL FRACTURE, LEFT ANKLE AND FOOT SUBSEQUENT ENCOUNTER FOR FRACTURE WITH DELAYED HEALING
M80872K	OTHER OSTEOPOROSIS WITH CURRENT PATHOLOGICAL FRACTURE, LEFT ANKLE AND FOOT SUBSEQUENT ENCOUNTER FOR FRACTURE WITH NONUNION
M80872P	OTHER OSTEOPOROSIS WITH CURRENT PATHOLOGICAL FRACTURE, LEFT ANKLE AND FOOT SUBSEQUENT ENCOUNTER FOR FRACTURE WITH MALUNION
M80872S	OTHER OSTEOPOROSIS WITH CURRENT PATHOLOGICAL FRACTURE, LEFT ANKLE AND FOOT SEQUELA
M80879A	OTHER OSTEOPOROSIS WITH CURRENT PATHOLOGICAL FRACTURE, UNSPECIFIED ANKLE AND FOOT INITIAL ENCOUNTER FOR FRACTURE
M80879D	OTHER OSTEOPOROSIS WITH CURRENT PATHOLOGICAL FRACTURE, UNSPECIFIED ANKLE AND FOOT SUBSEQUENT ENCOUNTER FOR FRACTURE WITH ROUTINE HEALING
M80879G	OTHER OSTEOPOROSIS WITH CURRENT PATHOLOGICAL FRACTURE, UNSPECIFIED ANKLE AND FOOT SUBSEQUENT ENCOUNTER FOR FRACTURE WITH DELAYED HEALING
M80879K	OTHER OSTEOPOROSIS WITH CURRENT PATHOLOGICAL FRACTURE, UNSPECIFIED ANKLE AND FOOT SUBSEQUENT ENCOUNTER FOR FRACTURE WITH NONUNION
M80879P	OTHER OSTEOPOROSIS WITH CURRENT PATHOLOGICAL FRACTURE, UNSPECIFIED ANKLE AND FOOT SUBSEQUENT ENCOUNTER FOR FRACTURE WITH MALUNION



<b>Step 7 (diagnosis of scleroderma, osteoporosis, systemic fungal infection, ocular herpes simplex, peptic ulcer and/or heart failure)</b>	
<b>Required quantity: 1</b>	
<b>Look back timeframe: 365 days</b>	
<b>ICD-10 Code</b>	<b>Description</b>
M80879S	OTHER OSTEOPOROSIS WITH CURRENT PATHOLOGICAL FRACTURE, UNSPECIFIED ANKLE AND FOOT SEQUELA
M8088XA	OTHER OSTEOPOROSIS WITH CURRENT PATHOLOGICAL FRACTURE, VERTEBRA(E) INITIAL ENCOUNTER FOR FRACTURE
M8088XD	OTHER OSTEOPOROSIS WITH CURRENT PATHOLOGICAL FRACTURE, VERTEBRA(E) SUBSEQUENT ENCOUNTER FOR FRACTURE WITH ROUTINE HEALING
M8088XG	OTHER OSTEOPOROSIS WITH CURRENT PATHOLOGICAL FRACTURE, VERTEBRA(E) SUBSEQUENT ENCOUNTER FOR FRACTURE WITH DELAYED HEALING
M8088XK	OTHER OSTEOPOROSIS WITH CURRENT PATHOLOGICAL FRACTURE, VERTEBRA(E) SUBSEQUENT ENCOUNTER FOR FRACTURE WITH NONUNION
M8088XP	OTHER OSTEOPOROSIS WITH CURRENT PATHOLOGICAL FRACTURE, VERTEBRA(E) SUBSEQUENT ENCOUNTER FOR FRACTURE WITH MALUNION
M8088XS	OTHER OSTEOPOROSIS WITH CURRENT PATHOLOGICAL FRACTURE, VERTEBRA(E) SEQUELA



## HP Acthar

### Clinical Criteria References

1. Clinical Pharmacology [online database]. Tampa, FL: Elsevier / Gold Standard, Inc. 2019. Available at <http://www.clinicalpharmacology.com>. Accessed on May 16, 2019.
2. Micromedex [online database]. Available at [www.micromedexsolutions.com](http://www.micromedexsolutions.com). Accessed on May 16, 2019.
3. 2014 ICD-9-CM Diagnosis Codes, Volume 1. 2013. Available at <http://www.icd9data.com/>. Accessed on September 9, 2015.
4. 2014 ICD-10-CM Diagnosis Codes, Volume 1. 2013. Available at <http://www.icd10data.com/>. Accessed on September 9, 2015.
5. H.P. Acthar Gel Prescribing Information. Mallinckrodt Pharmaceuticals. March 2019.
6. Go CY, Mackay MT, Weiss SK, et al. Evidence-based guideline update: medical treatment of infantile spasms: report of the Guideline Development Subcommittee of the American Academy of Neurology and the Practice Committee of the Child Neurology Society. *Neurology*. 2012 Jun 12;78(24):1974-80.



## HP Acthar

### Publication History

### Publication History

The Publication History records the publication iterations and revisions to this document. Notes for the *most current revision* are also provided in the **Revision Notes** on the first page of this document.

Publication Date	Notes
11/24/2014	Initial publication and posting to website
09/09/2015	Review and update ICD-9 and ICD-10s
02/17/2016	Updated GCNs and ICD-9/10s
10/12/2018	Removed ICD-9 codes Added nephrotic syndrome to question 3 in criteria logic, page 3 Updated Table 3 to include nephrotic syndrome, page 20 Updated Table 4, pages 20-22 Updated references, page 41
03/29/2019	Updated to include formulary statement (The listed GCNS may not be an indication of TX Medicaid Formulary coverage. To learn the current formulary coverage, visit <a href="http://TxVendorDrug.com/formulary/formulary-search">TxVendorDrug.com/formulary/formulary-search</a> .) on each 'Drug Requiring PA' table
07/15/2019	Annual review by staff Updated Table 4, pages 20-21 Updated references, page 41
07/24/2020	Update criteria and presentation to DUR Board